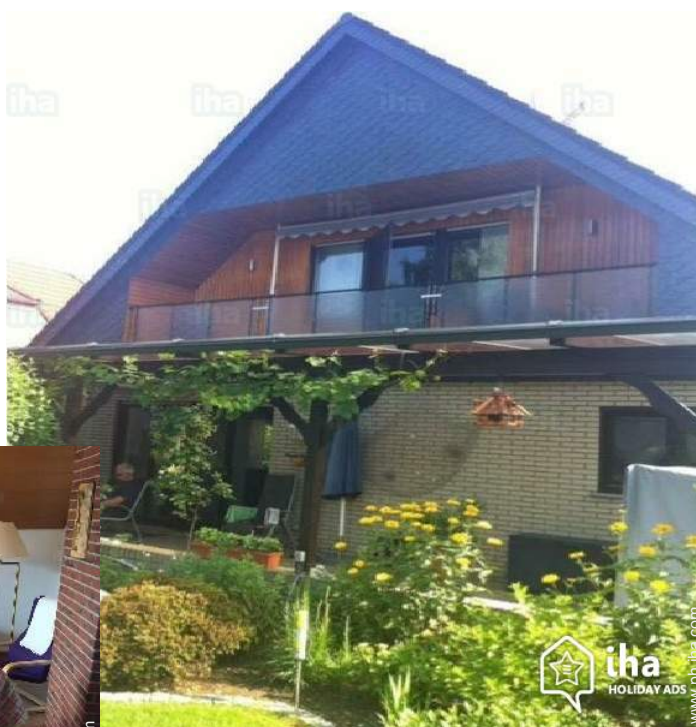


# Charming vacation rental Kevelaer "Poczewski"

Bright open great non-smoking apartment in Kevelaer Twisteden. 1 floor : 2 family house. The apartment is equipped with laminate. Large bright loggia with garden furniture. Enjoy sunsets from its South West location.



**Charming Studio Flat** 2nd floor in(on)  
a(an) Luxury House 1 floor

Setting : suitable for a relaxing break,  
sporty

Capacity : **from 1 to 4 person(s)**

Bedroom(s) : **1**

Room(s) : **2**

**Kevelaer - Düsseldorf Region - North Rhine Westphalia**

**Germany**

Reservation : +49 (0) 2832 799928 (Germany)

Advert No. 26622

[www.ph.ih.com](http://www.ph.ih.com)



>> VACATION HOMES

DIRECT BY OWNERS

## Charming vacation rental



Charming Studio Flat 2nd floor in (on) a(an)  
Luxury House 1 floor

- View : country side, farmland, prairie, village, fantastic sunset, nightlights
- Setting : suitable for a relaxing break, sporty
- Exposure : South-west

" A large bedroom with a double bed. Zustelliege or travel cot can be ordered from us. Contain linen in the price. Large eat-in kitchen: microwave, hot air fully equipped with dishwasher, fridge, freezer, cooker, hob, kettle, coffee machine, Padmaschine, for the beginning of coffee and tea available. Bathroom with shower and bathtub, towels, toilet paper, shower gel, hand washing gel, hair dryer, etc. available. Large living room with double bed, comfortable armchairs, LCD TV, CD/DVD player, large game collection for bad weather, we are pleased to provide our guests 2 bicycles, Wi-Fi in the price included. "

## Assets

- baby equipment :  
High chair



## Surroundings & location



Countryside

" Enjoy the sunsets in our beautiful Loggia, or going around the corner to our mini golf course. Take our bikes and take a trip in the Netherlands, about 3 km away. For water lovers, there's the great leisure pool Goch Ness or in Kevelaer the indoor or outdoor swimming pool, or in the thermal bath Arcen/NL. Visit our Basilica in the Wallfahrtsort of Kevelaer, or simply enjoy the many shops and coffee BB's in the district. Also hike is possible, only fields and forest, because we located 4 kilometres from the nearest town. In the village, Ireland are a mini golf course and the farm area with its huge offer for children. "

### Leisure

- Leisure activities less than 12 miles :

Ice-skating, bathing, tennis, pathway/broadwalk, coastal/forest paths, hiking, rappel, airships, boat trips, mini-golf, go-karting, ten-pin bowling

- Attractions and relaxation :

Restaurant, movie theater, park and garden, leisure park, zoo/animal park, exhibition center, art gallery, historical site, museum, theater, summer theater, local craftstore, cellar and wine tasting, casino, race track, natural spring baths, thermal baths, sauna, health spa, beauticians, fitness center, Bio farm

### Surroundings

- Locality :

Heated swimming pool 2,5km  
Sea/ocean >50km  
Public swimming pool 2,5km  
Flying clubs 10km  
River 2km  
Forest 100m

- Amenities :

Village center 300m  
Downtown 4km  
Bus stop / bus station 100m  
Bike/mountain bike hire 4km  
Breadstore 300m  
Caterer 300m  
Local stores 300m  
High class retailers 4km  
Hairdressing salon 50m  
Mail office 300m  
Bank 300m  
ATM 300m  
Drugstore 4km  
Doctor 200m  
Nurse 300m  
Hospital 4km



large bedroom



dining area

Advert No. 26622

[www.ph.ih.com](http://www.ph.ih.com)





large bedroom

### Interior

- **Receive up to :**  
from 1 to 4 person(s) (4 adults)
- **Liveable floor area :**  
80m<sup>2</sup>
- **Interior layout :**  
2 Room(s), 1 bedroom(s), sleeping den, bathroom, 1 shower room, 1 toilets, living room, separate kitchen, dining room, dining area, tv den, reading room, loggia
- **Sleeps - bed(s) :**  
1 full bed(s), 1 sleeper sofa(s) 2 pers, 1 baby cradle, 1 camp bed(s), 2 possible extra bed (s)
- **Guest facilities :**  
T.V., hi-fi system, DVD player, board games, book collection, cable/satellite, wifi, wardrobe, cupboard, Hanging wardrobe, radio alarmclock, hair dryer, heated towel rail, power shower, fly screens, central heating, skylights, Drapes, Blinds, Double glazed, Rolling shutters, fire alarm
- **Appliances :**  
Crockery/flatware, kitchen utensils, electric coffee maker, electric kettle, toaster, electric stove, electric hobs, micro-wave oven, extractor hood, refridgerator, deep freeze, dish washer, vacuum cleaner, iron, ironing board

### Exterior

- **Outside accommodation :**  
Balcony
- **Outside setting :**  
Enclosed grounds
- **Outside amenities :**  
Yard seat(s), trolley on wheels, parasol



Kitchen Area

### Services

- **washing :**  
Sheets, Towels, Linen, Comforter(s), Comforter(s), Pillows
- **Single family home :**  
Cleaning on departure supplement (+ PHP1896\*), Parking, Airport transfers supplement (+PHP632\*)

### For your guidance

- **For your guidance**  
Kids welcome  
Pets accepted under certain conditions (ask the owner)  
Non smoking rental, cell phone network coverage, personal transport advisable



kitchen

Photo album - 1



dining area



large bedroom



large bedroom



kitchen

Photo album - 2



Kitchen Area



kitchen



bathroom



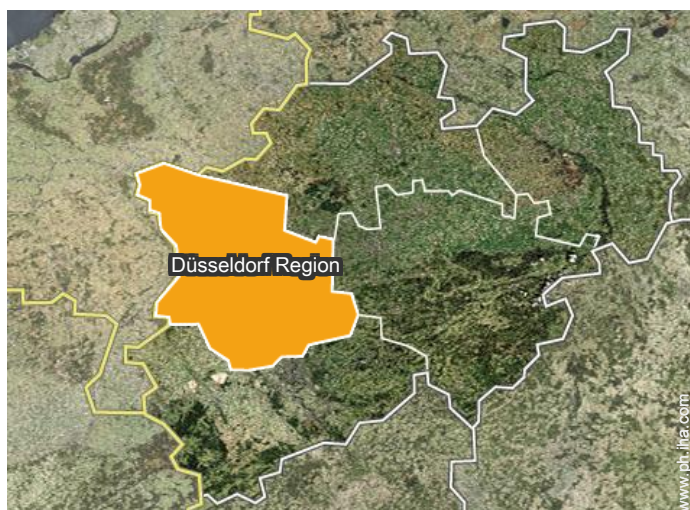
Summer



Summer




### Location



### Location & Access

" The nearest train station is Kevelaer and is situated about 4 kilometres away. The airport Weeze / Niederrhein is approximately 15 km away. And the motorway links to us is the A40 or A57. Come without a car we like to pick you up at train station. The citizen bus from our place every half hour to Kevelaer. In the village are a bakery, good and cheap, a butcher, a doctor, the Bank of China. "

 GPS coordinates in degrees, minutes, seconds: Latitude 51°33'12"N - Longitude 6° 12'33"E ([Dwelling](#))

#### Address

→ Quirinusstr. 3  
Twisteden  
47624 Kevelaer

• Duisburg : (50km)

#### • Airport Weeze

→ Weeze, Düsseldorf Region, North Rhine Westphalia, Germany  
→ Distance : 10km  
→ Time : 15'

- Kevelaer : (5km)
- Kleve : (31km)

### Contact

Spoken languages



Charming vacation rental  
Kevelaer - Germany  
"Poczewski"

7

[Book now](#)

Availability calendar - from : february 2018

Feb	Th	F	Sa	Su	M	Tu	W	Th	F	Sa	Su	M	Tu	W	Th	F	Sa	Su	M	Tu	W	Th	F	Sa	Su	M	Tu	W
2018	1	2	3	4	5	6	7	8	9	10	11	12	13	14	15	16	17	18	19	20	21	22	23	24	25	26	27	28

Mar	Th	F	Sa	Su	M	Tu	W	Th	F	Sa	Su	M	Tu	W	Th	F	Sa	Su	M	Tu	W	Th	F	Sa	Su	M	Tu	W	Th	F	Sa
2018	1	2	3	4	5	6	7	8	9	10	11	12	13	14	15	16	17	18	19	20	21	22	23	24	25	26	27	28	29	30	31
	-	-	-	-	-	-	-	-	-	-	-	-	-	-	-	-	-	-	-	-	-	-	-	-	-	-	-	-	-	-	

Apr	Su	M	Tu	W	Th	F	Sa	Su	M	Tu	W	Th	F	Sa	Su	M	Tu	W	Th	F	Sa	Su	M	Tu	W	Th	F	Sa	Su	M
2018	1	2	3	4	5	6	7	8	9	10	11	12	13	14	15	16	17	18	19	20	21	22	23	24	25	26	27	28	29	30
	-	-	-	-	-	-	-	-	-	-	-	-	-	-	-	-	-	-	-	-	-	-	-	-	-	-	-	-	-	

May	Tu	W	Th	F	Sa	Su	M	Tu	W	Th	F	Sa	Su	M	Tu	W	Th	F	Sa	Su	M	Tu	W	Th	F	Sa	Su	M	Tu	W	Th
2018	1	2	3	4	5	6	7	8	9	10	11	12	13	14	15	16	17	18	19	20	21	22	23	24	25	26	27	28	29	30	31
	-	-	-	-	-	-	-	-	-	-	-	-	-	-	-	-	-	-	-	-	-	-	-	-	-	-	-	-	-	-	

June	F	Sa	Su	M	Tu	W	Th	F	Sa	Su	M	Tu	W	Th	F	Sa	Su	M	Tu	W	Th	F	Sa	Su	M	Tu	W	Th	F	Sa
2018	1	2	3	4	5	6	7	8	9	10	11	12	13	14	15	16	17	18	19	20	21	22	23	24	25	26	27	28	29	30
	-	-	-	-	-	-	-	-	-	-	-	-	-	-	-	-	-	-	-	-	-	-	-	-	-	-	-	-	-	

Jul	Su	M	Tu	W	Th	F	Sa	Su	M	Tu	W	Th	F	Sa	Su	M	Tu	W	Th	F	Sa	Su	M	Tu	W	Th	F	Sa	Su	M	Tu
2018	1	2	3	4	5	6	7	8	9	10	11	12	13	14	15	16	17	18	19	20	21	22	23	24	25	26	27	28	29	30	31
	-	-	-	-	-	-	-	-	-	-	-	-	-	-	-	-	-	-	-	-	-	-	-	-	-	-	-	-	-		

Aug	W	Th	F	Sa	Su	M	Tu	W	Th	F	Sa	Su	M	Tu	W	Th	F	Sa	Su	M	Tu	W	Th	F	Sa	Su	M	Tu	W	Th	F
2018	1	2	3	4	5	6	7	8	9	10	11	12	13	14	15	16	17	18	19	20	21	22	23	24	25	26	27	28	29	30	31
	-	-	-	-	-	-	-	-	-	-	-	-	-	-	-	-	-	-	-	-	-	-	-	-	-	-	-	-	-		

Sep	Sa	Su	M	Tu	W	Th	F	Sa	Su	M	Tu	W	Th	F	Sa	Su	M	Tu	W	Th	F	Sa	Su	M	Tu	W	Th	F	Sa	Su
2018	1	2	3	4	5	6	7	8	9	10	11	12	13	14	15	16	17	18	19	20	21	22	23	24	25	26	27	28	29	30
	-	-	-	-	-	-	-	-	-	-	-	-	-	-	-	-	-	-	-	-	-	-	-	-	-	-	-	-	-	

Oct	M	Tu	W	Th	F	Sa	Su	M	Tu	W	Th	F	Sa	Su	M	Tu	W	Th	F	Sa	Su	M	Tu	W	Th	F	Sa	Su	M	Tu	W
2018	1	2	3	4	5	6	7	8	9	10	11	12	13	14	15	16	17	18	19	20	21	22	23	24	25	26	27	28	29	30	31
	-	-	-	-	-	-	-	-	-	-	-	-	-	-	-	-	-	-	-	-	-	-	-	-	-	-	-	-	-		

Nov	Th	F	Sa	Su	M	Tu	W	Th	F	Sa	Su	M	Tu	W	Th	F	Sa	Su	M	Tu	W	Th	F	Sa	Su	M	Tu	W	Th	F
2018	1	2	3	4	5	6	7	8	9	10	11	12	13	14	15	16	17	18	19	20	21	22	23	24	25	26	27	28	29	30
	-	-	-	-	-	-	-	-	-	-	-	-	-	-	-	-	-	-	-	-	-	-	-	-	-	-	-	-	-	

Charming vacation rental  
Düsseldorf Region - North Rhine Westphalia  
"Poczewski"

8

[Book now](#)


Availability calendar - from : november 2018

Dec	Sa	Su	M	Tu	W	Th	F	Sa	Su	M	Tu	W	Th	F	Sa	Su	M	Tu	W	Th	F	Sa	Su	M							
2018	1	2	3	4	5	6	7	8	9	10	11	12	13	14	15	16	17	18	19	20	21	22	23	24	25	26	27	28	29	30	31
-	-	-	-	-	-	-	-	-	-	-	-	-	-	-	-	-	-	-	-	-	-	-	-	-	-	-	-	-	-	-	

Jan	Tu	W	Th	F	Sa	Su	M	Tu	W	Th	F	Sa	Su	M	Tu	W	Th	F	Sa	Su	M	Tu	W	Th							
2019	1	2	3	4	5	6	7	8	9	10	11	12	13	14	15	16	17	18	19	20	21	22	23	24	25	26	27	28	29	30	31
-	-	-	-	-	-	-	-	-	-	-	-	-	-	-	-	-	-	-	-	-	-	-	-	-	-	-	-	-	-	-	

[Month : Next >>](#)

Rental rates - Charming Studio Flat - from 1 to 4 Person(s)

Rates	Night	Weekend	week	2 weeks	Month
 High season	PHP2528* > 3	PHP10113*	PHP20226*	PHP37923*	PHP63206*
> Minimum Night					

[Book now](#)

Booking conditions

• Reservation

→ Payment made upon reservation :  
20% of rental sum  
→ Payment balance :  
1 month before the stay

• rentals

→ Service charges included  
→ Cleaning charge levy on departure :  
PHP2528\*  
→ Anticipated supplement for :  
- animals  
- supplementary bed(s)

[▶ Book now](#)

[▶ Contact the owner](#)

Contact directly the property owners

[www.ph.ih.com](http://www.ph.ih.com)

Advert No.

26622

[>> Book now <<](#)

Accepted methods of payment

• Bank transfer (wire)

Contact

Spoken languages



\* Converted at the rate indicated : €100 = \$123.46 = £88.94 = PHP6320.57

Advert No. 26622

[www.ph.ih.com](http://www.ph.ih.com)

