

Gîte - Self Catering Güevéjar "Medina"

Houses in the outskirts of Granada, just 6 km away, located in the urban area, paved access, 3 and 4 bedrooms, Wifi, parking.



Gîte - Self Catering - House, attached home, 2 floors, separate entrance, in(on) a(an) Private property

Setting : tranquil, rural

Capacity : from 4 to 26 person(s)
Bedroom(s) : 11



Qualité tourisme ()
Case & Appartamenti per vacanze



Theme breaks
Harvesting of the Olives
Hikes

Güevéjar - Granada Province - Andalusia

Spain

Advert No. 22408

www.ph.ih.com



>> VACATION HOMES

DIRECT BY OWNERS



Gîte - Self Catering



Gîte - Self Catering - House, attached home, 2 floors, separate entrance, in(on) a (an) Private property

- **Ideal for all age groups, family**
- **View :** panoramic, mountain, country side, courtyard, village, street/avenue
- **Setting :** tranquil, rural
- **Exposure :** South

" We have three houses in the town of Güevéjar. They are three independent houses but they can be rented in its entirety for a large group, the houses consist of two or three floors, spacious, 130 m2 each; houses with 3 and 4 double bedrooms and two bathrooms and toilet; they have heating in all rooms and air conditioning in the living room. Each house has its patio with barbecue, and they share a games area with billiards, table football and ping pong. They are in the urban area of the town, with paved access, you can park in front of the establishment. There is a regular bus to the Centre of Granada. "

Assets

- **Parking :**
Covered parking : 2 communal.
- **Advantages :**
Pool table, table football, ping-pong table, 2 ping-pong bats
- **baby equipment :**
High chair

Surroundings & location



Countryside

" From the houses there are several rural trails for hiking activities. In the towns nearby, you can visit the cueva del Agua, Amazon Park. Sierra Nevada is 40 minutes by car; the Tropical Coast to 50 minutes; Malaga 120 km. Granada airport is 15 minutes away and Malaga 120 km. "

Leisure

- **Leisure activities less than 12 miles :**
Canoeing, golf, pathway/broadwalk, coastal/forest paths, hiking, rappel, race track, paintball, hunting, fishing
- **Attractions and relaxation :**
Bar/pub, restaurant, movie theater, park and garden, leisure park, nature reserve, historical site, beauticians, fitness center

Surroundings

- **Locality :**
Ski slopes 40km
Ski lifts 40km
Sandy beach 50km
Stretch of water 7,5km
Forest 10km
- **Amenities :**
Village center 500m
Bus stop / bus station 100m
Breadstore 100m
Local stores 500m
Supermarket 500m
Hairdressing salon 300m
Mail office 500m
Drugstore 500m
Doctor 500m
Hospital 10km



Sleeps - bed(s)



Guest facilities and furnishings



bedroom

Interior

- **Receive up to :**
from 4 to 26 person(s)
- **Liveable floor area :**
120m²
- **Interior layout :**
11 bedroom(s), 2 bathroom, 1 shower room, sitting room 15m², american style kitchen, dining area, laundry room, patio
- **Sleeps - bed(s) :**
2 full bed(s), 4 twin bed(s), 2 guest folding bed(s) 1 pers
- **Guest facilities :**
T.V., wifi, wardrobe, cupboard, hair dryer, partly air-conditioned, electric heating, Drapes
- **Appliances :**
Crockery/flatware, kitchen utensils, cafetiere, electric kettle, toaster, juicer, electric hobs, micro-wave oven, extractor hood, refridgerator, deep freeze, iron, ironing board



Interior layout

Exterior

- **Outside setting :**
Private courtyard 12m²
- **Outside amenities :**
BBQ, yard table(s), yard seat(s), parasol



Kitchen Area

Services

- **washing :**
Sheets, Towels, Comforter(s), Comforter(s), Pillows
- **Single family home :**
Cleaning on departure

For your guidance

- **For your guidance**
Kids welcome
Pets friendly
Cell phone network coverage
Water : hot/cold
Electricity supply : mains
- **Handicapped people welcome**
Wheelchair access
Fitted out for the disabled : mobility

Photo album - 1



Guest facilities and furnishings



Sleeps - bed(s)



bedroom



Interior layout



Kitchen Area

Photo album - 2



furniture



façade



Interior layout



shower room



dining area



full bed(s)



Single family home



BBQ



Outside accommodation



pool table

Photo album - 3



sitting room



twin bed(s)



master bedroom



view over the countryside



large bedroom



twin bed(s)



view from the house



bathroom



Single family home



ping-pong table

Theme breaks

Harvesting of the Olives

Indicated duration : 1/2 day
Level : Initiation

Included in the price of the accommodation for 6 person(s)

Winter

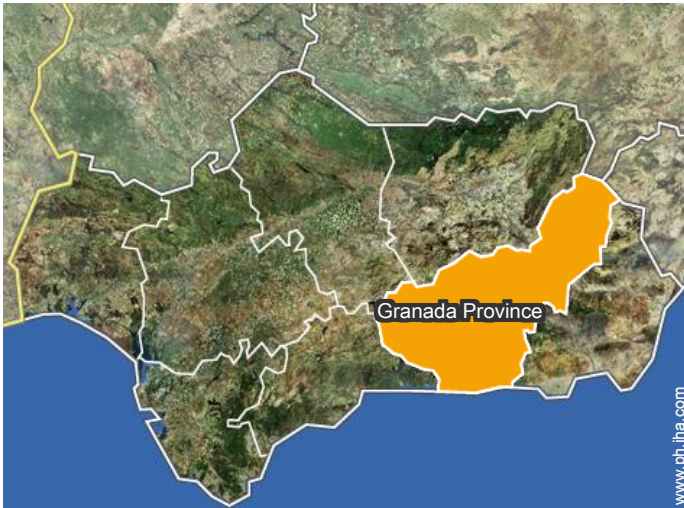
Hikes

Indicated duration : 3 hours
Participant(s) : 5 min - 18 max
Level : Initiation

Included in the price of the accommodation for 6 person(s)

Fall, spring

Location



Location & Access

" The houses are located in Calle Almeria, 11 of Güevéjar. Since the A-92 is the exit 245. "



GPS coordinates in degrees, minutes, seconds: Latitude 37°15'26"N - Longitude 3°35'37"W (Dwelling)

Address

→ C/ Almeria 11
18212 Güevéjar

Andalusia, Spain
→ Distance : 10km
→ Time : 20'

● Airport Federico García Lorca Granada Jaén

→ Granada (Andalusia), Granada Province, Andalusia, Spain
→ Distance : 20km
→ Time : 20'

● Albolote : (7,5km)

● Airport Málaga Costa del Sol

→ Málaga, Málaga Province, Andalusia, Spain
→ Distance : 140km
→ Time : 1h15'

● Railroad station Granada

→ Granada (Andalusia), Granada Province,

Contact

Spoken languages



Gîte - Self Catering
Güevéjar - Spain
"Medina"

[Book now](#)

Availability calendar - from : february 2018

Feb	Th	F	Sa	Su	M	Tu	W	Th	F	Sa	Su	M	Tu	W	Th	F	Sa	Su	M	Tu	W	Th	F	Sa	Su	M	Tu	W
2018	1	2	3	4	5	6	7	8	9	10	11	12	13	14	15	16	17	18	19	20	21	22	23	24	25	26	27	28
																			-	-	-	-	-	-	-	-	-	

Mar	Th	F	Sa	Su	M	Tu	W	Th	F	Sa	Su	M	Tu	W	Th	F	Sa	Su	M	Tu	W	Th	F	Sa	Su	M	Tu	W	Th	F	Sa
2018	1	2	3	4	5	6	7	8	9	10	11	12	13	14	15	16	17	18	19	20	21	22	23	24	25	26	27	28	29	30	31
	-	-	-	-	-	-	-	-	-	-	-	-	-	-	-	-	-	-	-	-	-	-	-	-	-	-	-	-	-	-	

Apr	Su	M	Tu	W	Th	F	Sa	Su	M	Tu	W	Th	F	Sa	Su	M	Tu	W	Th	F	Sa	Su	M	Tu	W	Th	F	Sa	Su	M
2018	1	2	3	4	5	6	7	8	9	10	11	12	13	14	15	16	17	18	19	20	21	22	23	24	25	26	27	28	29	30
	-	-	-	-	-	-	-	-	-	-	-	-	-	-	-	-	-	-	-	-	-	-	-	-	-	-	-	-	-	

May	Tu	W	Th	F	Sa	Su	M	Tu	W	Th	F	Sa	Su	M	Tu	W	Th	F	Sa	Su	M	Tu	W	Th	F	Sa	Su	M	Tu	W	Th
2018	1	2	3	4	5	6	7	8	9	10	11	12	13	14	15	16	17	18	19	20	21	22	23	24	25	26	27	28	29	30	31
	-	-	-	-	-	-	-	-	-	-	-	-	-	-	-	-	-	-	-	-	-	-	-	-	-	-	-	-	-	-	

June	F	Sa	Su	M	Tu	W	Th	F	Sa	Su	M	Tu	W	Th	F	Sa	Su	M	Tu	W	Th	F	Sa							
2018	1	2	3	4	5	6	7	8	9	10	11	12	13	14	15	16	17	18	19	20	21	22	23	24	25	26	27	28	29	30
	-	-	-	-	-	-	-	-	-	-	-	-	-	-	-	-	-	-	-	-	-	-	-	-	-	-	-	-	-	

Jul	Su	M	Tu	W	Th	F	Sa	Su	M	Tu	W	Th	F	Sa	Su	M	Tu	W	Th	F	Sa	Su	M	Tu	W	Th	F	Sa	Su	M	Tu
2018	1	2	3	4	5	6	7	8	9	10	11	12	13	14	15	16	17	18	19	20	21	22	23	24	25	26	27	28	29	30	31
	-	-	-	-	-	-	-	-	-	-	-	-	-	-	-	-	-	-	-	-	-	-	-	-	-	-	-	-	-	-	

Aug	W	Th	F	Sa	Su	M	Tu	W	Th	F	Sa	Su	M	Tu	W	Th	F	Sa	Su	M	Tu	W	Th	F	Sa	Su	M	Tu	W	Th	F
2018	1	2	3	4	5	6	7	8	9	10	11	12	13	14	15	16	17	18	19	20	21	22	23	24	25	26	27	28	29	30	31
	-	-	-	-	-	-	-	-	-	-	-	-	-	-	-	-	-	-	-	-	-	-	-	-	-	-	-	-	-	-	

Sep	Sa	Su	M	Tu	W	Th	F	Sa	Su	M	Tu	W	Th	F	Sa	Su	M	Tu	W	Th	F	Sa	Su							
2018	1	2	3	4	5	6	7	8	9	10	11	12	13	14	15	16	17	18	19	20	21	22	23	24	25	26	27	28	29	30
	-	-	-	-	-	-	-	-	-	-	-	-	-	-	-	-	-	-	-	-	-	-	-	-	-	-	-	-	-	

Oct	M	Tu	W	Th	F	Sa	Su	M	Tu	W	Th	F	Sa	Su	M	Tu	W	Th	F	Sa	Su	M	Tu	W							
2018	1	2	3	4	5	6	7	8	9	10	11	12	13	14	15	16	17	18	19	20	21	22	23	24	25	26	27	28	29	30	31
	-	-	-	-	-	-	-	-	-	-	-	-	-	-	-	-	-	-	-	-	-	-	-	-	-	-	-	-	-		

Nov	Th	F	Sa	Su	M	Tu	W	Th	F	Sa	Su	M	Tu	W	Th	F	Sa	Su	M	Tu	W	Th	F							
2018	1	2	3	4	5	6	7	8	9	10	11	12	13	14	15	16	17	18	19	20	21	22	23	24	25	26	27	28	29	30
	-	-	-	-	-	-	-	-	-	-	-	-	-	-	-	-	-	-	-	-	-	-	-	-	-	-	-	-	-	



Gîte - Self Catering
Andalusia - Güevéjar
"Medina"

10
[Book now](#)

Availability calendar - from : november 2018

Dec	Sa	Su	M	Tu	W	Th	F	Sa	Su	M	Tu	W	Th	F	Sa	Su	M	Tu	W	Th	F	Sa	Su	M							
2018	1	2	3	4	5	6	7	8	9	10	11	12	13	14	15	16	17	18	19	20	21	22	23	24	25	26	27	28	29	30	31
-	-	-	-	-	-	-	-	-	-	-	-	-	-	-	-	-	-	-	-	-	-	-	-	-	-	-	-	-	-	-	

Jan	Tu	W	Th	F	Sa	Su	M	Tu	W	Th	F	Sa	Su	M	Tu	W	Th	F	Sa	Su	M	Tu	W	Th							
2019	1	2	3	4	5	6	7	8	9	10	11	12	13	14	15	16	17	18	19	20	21	22	23	24	25	26	27	28	29	30	31
-	-	-	-	-	-	-	-	-	-	-	-	-	-	-	-	-	-	-	-	-	-	-	-	-	-	-	-	-	-	-	

[Month : Next >>](#)

Rental rates - Gîte - Self Catering - House - from 4 to 26 Person(s)

Rates	Night	Weekend	week	2 weeks	Month
■ Low season	-	PHP16433*	PHP37923*	PHP63206*	-
■ Mid season	-	PHP18962*	PHP44244*	PHP75847*	-
■ High season	-	-	PHP56885*	PHP94809*	-
■ Promotional period	PHP5056* > 3	PHP11377*	PHP34763*	-	-

> Minimum Night

[Book now](#)

Booking conditions

• Reservation

→ Payment made upon reservation :
20% of rental sum
→ Payment balance :
on handing over the keys

• rentals

→ Service charges included
→ Day tax included
→ Cleaning charge on departure included
→ Anticipated supplement for :
- supplementary bed(s)

[▶ Book now](#)

[▶ Contact the owner](#)

Accepted methods of payment

• Bank transfer (wire) • Cash

Contact directly the property owners

www.ph.ih.com

Advert No.

22408

[>> Book now <<](#)

Contact

Spoken languages



* Converted at the rate indicated : €100 = \$123.46 = £88.94 = PHP6320.57

Advert No. 22408

www.ph.ih.com

