

# Gîte - Self Catering Kintzheim "Gitelsass67"

House Alsatian all comfort (3 stars) for 2 to 4 people



Gîte - Self Catering - House,  
detached, 2 floors, separate entrance, in  
(on) a(an) Private property

Setting : picturesque, natural

Capacity : from 2 to 4 person(s)

Bedroom(s) : 2

Room(s) : 4



Meublés de Tourisme (3 stars)

Kintzheim - Lower Rhine (67) - Alsace

France

Advert No. 487

[www.ph.ihh.com](http://www.ph.ihh.com)



>> VACATION HOMES

DIRECT BY OWNERS

## Gîte - Self Catering



Gîte - Self Catering - House, detached, 2 floors, separate entrance, in(on) a(an) Private property

- **Ideal for family, all age groups**
- **View :** panoramic, courtyard, Vineyards, forest, village, monument
- **Setting :** picturesque, natural
- **Exposure :** South

" Court flowered and closed with garden and parking place reserved. Tourist documentation made available in the lounge with TV, which will be a place of rest and conviviality. Balcony shaded by lime tree which stands in the courtyard where you can leisurely dine and relax after a day of sightseeing: view of Château de Kintzheim (Eagle of the Eagles) "

## Assets

- **Parking :**  
Parking uncovered : 1 off road.
- **baby equipment :**  
High chair, infant tub



kitchen

## Surroundings & location



Countryside



Golf



Ski



Horse riding



Fishing

" Kintzheim is a village located on the Wine Route and Centre-Alsace: so you're ready for all tourist attractions: Volerie des Aigles, monkey mountain, Castle of Haut-Koenigsbourg, Cigoland, storks and otters Park,... not to mention all the picturesque villages such as RIBEAUVILLÉ, RIQUEWIHR, EGUISHHEIM... "

### Leisure

- **Leisure activities less than 12 miles :**  
Bathing, golf, riding school, hiking, paragliding, horse trekking, ten-pin bowling, fishing, pétanque field
- **Supervised :**  
Riding school
- **Attractions and relaxation :**  
Bar/pub, discotheque, restaurant, movie theater, zoo/animal park, historical site, museum, antiques & bric-a-brac, cellar and wine tasting, casino, beauticians, fitness center, Bio farm

### Surroundings

- **Locality :**  
Ski slopes  
Ski lifts  
Ice skating rink  
Heated swimming pool  
Public swimming pool  
18 hole golf course  
Watersports centre  
River  
Stretch of water  
Lake  
Forest  
Mountain range
- **Amenities :**  
Village center <50m  
Breadstore <50m  
Caterer <50m  
Local stores <50m  
Supermarket 3km  
Hairdressing salon <50m  
Internet cafe 7,5km  
Mail office <50m  
Bank <50m  
ATM <50m  
Drugstore 5km  
Doctor <50m  
Nurse 50m  
Hospital 5km



bedroom



separate kitchen



bedroom

### Interior

- **Receive up to :**  
from 2 to 4 person(s) (4 adults)
- **Liveable floor area :**  
65m<sup>2</sup>
- **Interior layout :**  
4 Room(s), 2 bedroom(s), shower room, 1 toilets, sitting room 10m<sup>2</sup>, separate kitchen, tv den
- **Sleeps - bed(s) :**  
2 full bed(s), 1 baby cradle
- **Guest facilities :**  
T.V., board games, cable/satelite, wardrobe, Hanging wardrobe, radio alarmclock, hair dryer, mobile cool air fan, central heating, Drapes, Double glazed, remote controlled gates
- **Appliances :**  
Crockery/flatware, kitchen utensils, cafetiere, electric coffee maker, gaz stove, mini-oven, micro-wave oven, extractor hood, reffridgerator, deep freeze, washing machine, vacuum cleaner, iron, ironing board

### Exterior

- **Ground surface :**  
< 100m<sup>2</sup>
- **Outside accommodation :**  
Covered terrace 4m<sup>2</sup>
- **Outside setting :**  
Private courtyard 30m<sup>2</sup>, enclosed grounds
- **Outside amenities :**  
BBQ, yard table(s), 4 yard seat(s), arbour, yard seated area



Summer

### Services

- **washing :**  
Sheets supplement, Towels supplement, Linen supplement, Comforter(s), Comforter (s), Pillows
- **Single family home :**  
Cleaning on departure supplement, Parking

### For your guidance

- **For your guidance**  
Kids welcome  
Present on site : pets  
Water : hot/cold  
Local voltage supply : 220-240V / 50Hz  
Electricity supply : mains



sitting room

Photo album - 1



kitchen



separate kitchen



bedroom



bedroom



sitting room

Photo album - 2



Summer



view from the covered terrace



Single family home



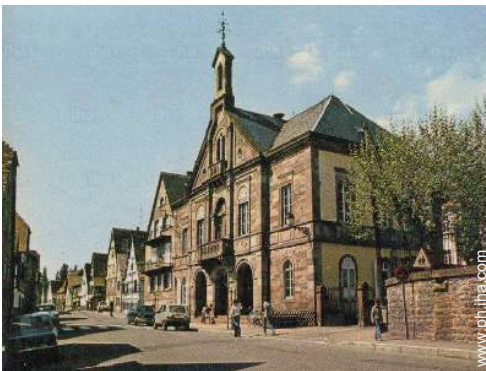
Single family home



view from the covered terrace



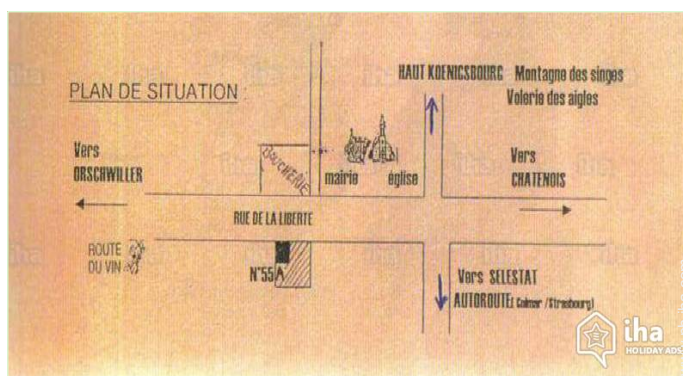
view of the village



village center



## Route map



## Location & Access

" On the Wine Route, in Central ALSACE between STRASBOURG and COLMAR "



GPS coordinates in degrees, minutes, seconds: Latitude 48° 15'14"N - Longitude 7°23'40"E ([Dwelling](#))

### Address

→ 55a rue de la liberte  
67600 Kintzheim

### • Freeway (exit) A4

→ Kintzheim, Lower Rhine, Alsace, France  
→ Distance : 5km  
→ Time : 5h

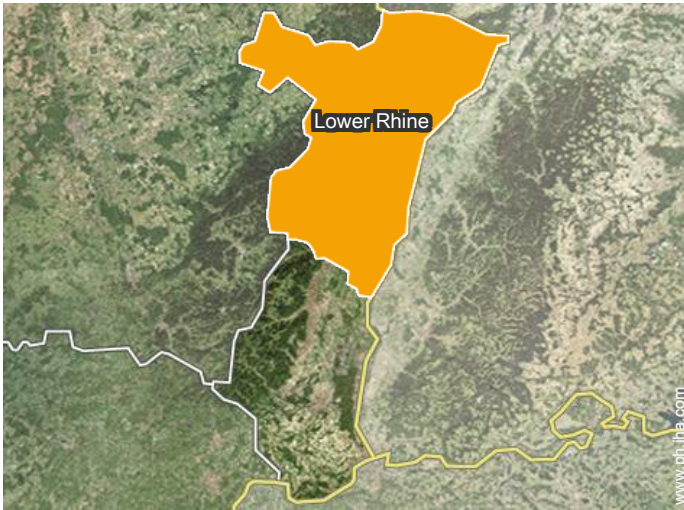
- Sélestat : (5km)
- Châtenois : (3km)
- Strasbourg : (38km)

## Contact

Spoken languages



Location



Gîte - Self Catering  
Lower Rhine - Alsace  
"Gitelsass67"

[Book now](#)

Availability calendar - from : september 2021

Sep	W	Th	F	Sa	Su	M	Tu	W	Th	F	Sa	Su	M	Tu	W	Th	F	Sa	Su	M	Tu	W	Th							
2021	1	2	3	4	5	6	7	8	9	10	11	12	13	14	15	16	17	18	19	20	21	22	23	24	25	26	27	28	29	30

Oct	F	Sa	Su	M	Tu	W	Th	F	Sa	Su	M	Tu	W	Th	F	Sa	Su	M	Tu	W	Th	F	Sa	Su							
2021	1	2	3	4	5	6	7	8	9	10	11	12	13	14	15	16	17	18	19	20	21	22	23	24	25	26	27	28	29	30	31
	-	-	-	-	-	-	-	-	-	-	-	-	-	-	-	-	-	-	-	-	-	-	-	-	-	-	-	-	-	-	

Nov	M	Tu	W	Th	F	Sa	Su	M	Tu	W	Th	F	Sa	Su	M	Tu	W	Th	F	Sa	Su	M	Tu							
2021	1	2	3	4	5	6	7	8	9	10	11	12	13	14	15	16	17	18	19	20	21	22	23	24	25	26	27	28	29	30
	-	-	-	-	-	-	-	-	-	-	-	-	-	-	-	-	-	-	-	-	-	-	-	-	-	-	-	-	-	-

Dec	W	Th	F	Sa	Su	M	Tu	W	Th	F	Sa	Su	M	Tu	W	Th	F	Sa	Su	M	Tu	W	Th	F							
2021	1	2	3	4	5	6	7	8	9	10	11	12	13	14	15	16	17	18	19	20	21	22	23	24	25	26	27	28	29	30	31
	-	-	-	-	-	-	-	-	-	-	-	-	-	-	-	-	-	-	-	-	-	-	-	-	-	-	-	-	-	-	

Jan	Sa	Su	M	Tu	W	Th	F	Sa	Su	M	Tu	W	Th	F	Sa	Su	M	Tu	W	Th	F	Sa	Su	M							
2022	1	2	3	4	5	6	7	8	9	10	11	12	13	14	15	16	17	18	19	20	21	22	23	24	25	26	27	28	29	30	31
	-	-	-	-	-	-	-	-	-	-	-	-	-	-	-	-	-	-	-	-	-	-	-	-	-	-	-	-	-	-	

Feb	Tu	W	Th	F	Sa	Su	M	Tu	W	Th	F	Sa	Su	M	Tu	W	Th	F	Sa	Su	M							
2022	1	2	3	4	5	6	7	8	9	10	11	12	13	14	15	16	17	18	19	20	21	22	23	24	25	26	27	28
	-	-	-	-	-	-	-	-	-	-	-	-	-	-	-	-	-	-	-	-	-	-	-	-	-	-	-	-

Mar	Tu	W	Th	F	Sa	Su	M	Tu	W	Th	F	Sa	Su	M	Tu	W	Th	F	Sa	Su	M	Tu	W	Th							
2022	1	2	3	4	5	6	7	8	9	10	11	12	13	14	15	16	17	18	19	20	21	22	23	24	25	26	27	28	29	30	31
	-	-	-	-	-	-	-	-	-	-	-	-	-	-	-	-	-	-	-	-	-	-	-	-	-	-	-	-	-	-	

Apr	F	Sa	Su	M	Tu	W	Th	F	Sa	Su	M	Tu	W	Th	F	Sa	Su	M	Tu	W	Th	F	Sa							
2022	1	2	3	4	5	6	7	8	9	10	11	12	13	14	15	16	17	18	19	20	21	22	23	24	25	26	27	28	29	30
	-	-	-	-	-	-	-	-	-	-	-	-	-	-	-	-	-	-	-	-	-	-	-	-	-	-	-	-	-	-

May	Su	M	Tu	W	Th	F	Sa	Su	M	Tu	W	Th	F	Sa	Su	M	Tu	W	Th	F	Sa	Su	M	Tu							
2022	1	2	3	4	5	6	7	8	9	10	11	12	13	14	15	16	17	18	19	20	21	22	23	24	25	26	27	28	29	30	31
	-	-	-	-	-	-	-	-	-	-	-	-	-	-	-	-	-	-	-	-	-	-	-	-	-	-	-	-	-	-	

June	W	Th	F	Sa	Su	M	Tu	W	Th	F	Sa	Su	M	Tu	W	Th	F	Sa	Su	M	Tu	W	Th							
2022	1	2	3	4	5	6	7	8	9	10	11	12	13	14	15	16	17	18	19	20	21	22	23	24	25	26	27	28	29	30
	-	-	-	-	-	-	-	-	-	-	-	-	-	-	-	-	-	-	-	-	-	-	-	-	-	-	-	-	-	-

 Reserved



Availability calendar - from : june 2022

Jul	F	Sa	Su	M	Tu	W	Th	F	Sa	Su	M	Tu	W	Th	F	Sa	Su	M	Tu	W	Th	F	Sa	Su							
2022	1	2	3	4	5	6	7	8	9	10	11	12	13	14	15	16	17	18	19	20	21	22	23	24	25	26	27	28	29	30	31
-	-	-	-	-	-	-	-	-	-	-	-	-	-	-	-	-	-	-	-	-	-	-	-	-	-	-	-	-	-	-	

Aug	M	Tu	W	Th	F	Sa	Su	M	Tu	W	Th	F	Sa	Su	M	Tu	W	Th	F	Sa	Su	M	Tu	W							
2022	1	2	3	4	5	6	7	8	9	10	11	12	13	14	15	16	17	18	19	20	21	22	23	24	25	26	27	28	29	30	31
-	-	-	-	-	-	-	-	-	-	-	-	-	-	-	-	-	-	-	-	-	-	-	-	-	-	-	-	-	-	-	

Reserved

[Month : Next >>](#)

Rental rates - Gîte - Self Catering - House - from 2 to 4 Person(s)

Rates	Night	Weekend	week	2 weeks	Month
<input type="checkbox"/> Low season	PHP5578* > 2	PHP11156*	PHP23552*	-	-
<input type="checkbox"/> Mid season	PHP5578* > 2	PHP11156*	PHP25412* (Saturday)	-	-
<input type="checkbox"/> High season	PHP26341* ↓ (Saturday) > 7	-	PHP26341* (Saturday)	PHP49584* (Saturday)	-
<input type="checkbox"/> Festive specials	PHP7438* > 2	PHP14875*	PHP27891* (Saturday)	-	-

↓ Reducing rates (Check-in day) > Minimum Night

[Book now](#)

Booking conditions

- **Reservation**
  - Payment made upon reservation : 25% of rental sum
  - Payment balance : on handing over the keys
  - Deposit required : PHP9297\*
- **rentals**
  - Day tax in addition
  - Cleaning charge levy on departure : PHP1240\*

[▶ Book now](#)

[▶ Contact the owner](#)

Accepted methods of payment

- Bank transfer (wire) • Check • Cash • Holiday coupon

Contact directly the property owners

[www.ph.ihha.com](http://www.ph.ihha.com)  
Advert No.  
487  
[>> Book now <<](#)

Contact

Spoken languages



\* Converted at the rate indicated : €100 = \$110 = £91 = PHP6197.99

Advert No. 487

[www.ph.ihha.com](http://www.ph.ihha.com)

