

Gîte - Self Catering São João de Tarouca "Casa da Portaria"

The House is the ideal place for your vacation, with family or with friends. It has 6 double rooms, swimming pool, barbecue, parking, a lounge with 100 m2 and 2000 m2 of land.



Gîte - Self Catering - Country House, detached, 2 floors, separate entrance, in(on) a(an) Property

Setting : country setting, peaceful

Capacity : from 10 to 14 person(s)

Bedroom(s) : 6

São João de Tarouca - Viseu District - Centro Region (Portugal)
Portugal

Advert No. 16367

www.ph.ih.com



>> VACATION HOMES

DIRECT BY OWNERS

Gîte - Self Catering



Gîte - Self Catering - Country House, detached, 2 floors, separate entrance, in(on) a(an) Property

- **Ideal for family groups, large families**
- **View** : panoramic, mountain, swimming pool, farmland, river, monument
- **Setting** : country setting, peaceful
- **Exposure** : North-west

" The House has 6 double rooms, of which 3 are suites. We rent the whole house or just a part, contact us for prices and conditions. In addition to the 6 bedrooms, the house has a large hall with 100 m2, two full kitchens, 5 WC, parking, barbecue, swimming pool and 2000 m2 of land. Options. We can rent the house in its entirety, with capacity for 12 people, or just a part, having an independent kitchen area and the number of rooms you need. "

Assets

- **Swimming pool** :
Private swimming pool, rectangular (length 10m, width 5m), steps in, step ladder, outside shower (open from 'april 01' till 'september 15')
- **Parking** :
Parking uncovered : 2 internal.
- **Advantages** :
Darts, 3 bike(s)

Surroundings & location



Countryside



Culture

" Located in the Douro region, famous for its wine and landscapes, is located in an historic village, with a magnificent Monastery, Church, bridges. The river Varosa passes by with waterfalls, windmills and places to swim. "

Leisure

- **Leisure activities less than 12 miles** :

Banana boat, water skiing, jet ski, canoeing, canyoning, rafting, tennis, squash, riding school, rappel, hang-gliding, paragliding, boat trips, mini-golf, ATV/Quad Bike, RC modelling track, basketball, volleyball, paintball, hunting, fishing

Surroundings

- **Locality** :

Heated swimming pool 20km
Sea/ocean >50km
Sea inlet 25km
Public swimming pool 10km
Public tennis court 15km
9 hole golf course >50km
Waterfall 500m
River 200m
Stretch of water 25km
Mountain range 1km
Slipway 20km
Jetski slipway 20km





view from the garden/park

Interior

- **Receive up to :**

from 10 to 14 person(s) (12 adults, 2 kids)

- **Interior layout :**

6 bedroom(s), 5 bathroom, living room 25m², sitting room 90m², separate kitchen, dining area, cosy nook, games room, reception hall

- **Sleeps - bed(s) :**

4 full bed(s), 1 queen-size bed(s), 2 sleeper sofa(s) 1 pers

- **Guest facilities :**

Fireplace, T.V., digital home cinema, hi-fi system, vcr, DVD player, board games, book collection, movie collection, t.v points, phone, cable/satelite, wifi, wardrobe, central heating, Drapes, Blinds, Double glazed

- **Appliances :**

Crockery/flatware, kitchen utensils, cafetiere, electric espresso coffee maker, toaster, juicer, meat broiler, gaz stove, oven, mini-oven, micro-wave oven, extractor hood, refridgerator, deep freeze, dish washer, washing machine, vacuum cleaner, iron, ironing board

Exterior

- **Ground surface :**

2000m²

- **Outside accommodation :**

Terrace 70m², sundeck 180m², gazebo, traditional tent

- **Outside setting :**

Private courtyard 70m², enclosed grounds 2000m², olive grove

- **Outside amenities :**

BBQ, yard table(s), 8 yard seat(s), arbour, parasol, 3 chaise(s) longue(s), 1 hammock (s), 1 rocking chair(s), outside shower facilities



kitchen

Services

- **washing :**

Sheets (1 X / per week), Towels (1 X / per week), Linen (1 X / per week), Comforter(s) (1 X / per week), Comforter(s) (1 X / per week), Pillows (1 X / per week)

- **Single family home :**

Cleaning (1 X / per week), Yard/swimming pool maintenance (1 X / per week)

- **Restauration :**

Breakfast supplement (+PHP620*)

For your guidance

- **For your guidance**

Kids welcome

Water : hot/cold

Local voltage supply : 220-240V / 50Hz



master bedroom

Photo album - 1



view from the garden/park



master bedroom



kitchen

Photo album - 2



bedroom



bedroom



living room



bathroom



kitchen



bedroom



bedroom



sitting room

Photo album - 3



sitting room



reception hall



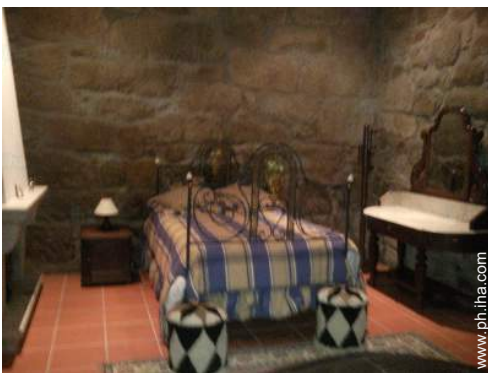
bathroom



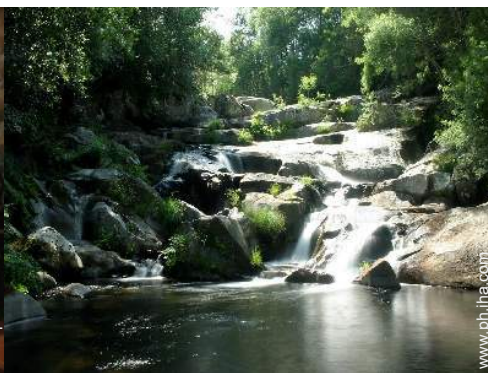
historical site



historical site



bedroom

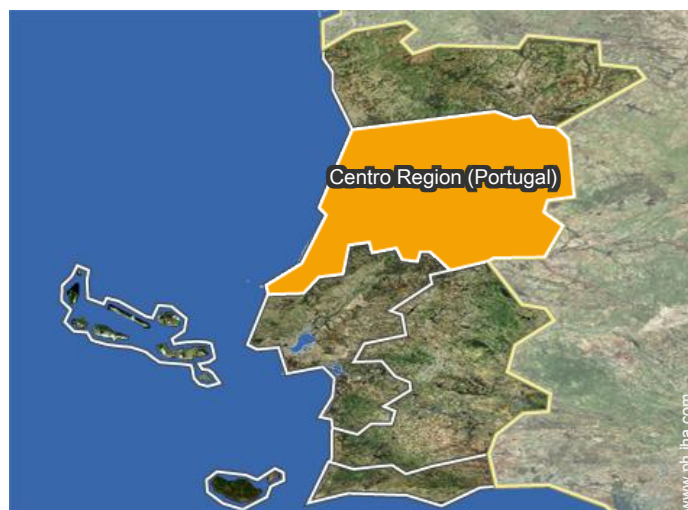


waterfall



private courtyard

Location



Location & Access

" In the Centre of São João de Tarouca, in front of the Church. "



GPS coordinates in degrees, minutes, seconds: Latitude 40°59'40"N - Longitude 7°44'54"W (Dwelling)

Address

→ Casa da Portaria
3610 082 São João de Tarouca

- Lamego : (15km)
- Peso da Régua : (23km)
- Vila Real : (45km)

Contact

Spoken languages



Gîte - Self Catering
Viseu District - Centro Region (Portugal)
"Casa da Portaria"

8

[Book now](#)

Availability calendar - from : december 2020

| Dec | Tu | W | Th | F | Sa | Su | M | Tu | W | Th | F | Sa | Su | M | Tu | W | Th | F | Sa | Su | M | Tu | W | Th | | | | | | | |
|------|----|---|----|---|----|----|---|----|---|----|----|----|----|----|----|----|----|----|----|----|----|----|----|----|----|----|----|----|----|----|----|
| 2020 | 1 | 2 | 3 | 4 | 5 | 6 | 7 | 8 | 9 | 10 | 11 | 12 | 13 | 14 | 15 | 16 | 17 | 18 | 19 | 20 | 21 | 22 | 23 | 24 | 25 | 26 | 27 | 28 | 29 | 30 | 31 |
| | | | | - | - | - | - | - | - | - | - | - | - | - | - | - | - | - | - | - | - | - | - | - | - | - | - | - | - | - | |

| Jan | F | Sa | Su | M | Tu | W | Th | F | Sa | Su | M | Tu | W | Th | F | Sa | Su | M | Tu | W | Th | F | Sa | Su | | | | | | | |
|------|---|----|----|---|----|---|----|---|----|----|----|----|----|----|----|----|----|----|----|----|----|----|----|----|----|----|----|----|----|----|----|
| 2021 | 1 | 2 | 3 | 4 | 5 | 6 | 7 | 8 | 9 | 10 | 11 | 12 | 13 | 14 | 15 | 16 | 17 | 18 | 19 | 20 | 21 | 22 | 23 | 24 | 25 | 26 | 27 | 28 | 29 | 30 | 31 |
| | - | - | - | - | - | - | - | - | - | - | - | - | - | - | - | - | - | - | - | - | - | - | - | - | - | - | - | - | - | - | |

| Feb | M | Tu | W | Th | F | Sa | Su | M | Tu | W | Th | F | Sa | Su | M | Tu | W | Th | F | Sa | Su | | | | | | | |
|------|---|----|---|----|---|----|----|---|----|----|----|----|----|----|----|----|----|----|----|----|----|----|----|----|----|----|----|----|
| 2021 | 1 | 2 | 3 | 4 | 5 | 6 | 7 | 8 | 9 | 10 | 11 | 12 | 13 | 14 | 15 | 16 | 17 | 18 | 19 | 20 | 21 | 22 | 23 | 24 | 25 | 26 | 27 | 28 |
| | - | - | - | - | - | - | - | - | - | - | - | - | - | - | - | - | - | - | - | - | - | - | - | - | - | - | - | - |

| Mar | M | Tu | W | Th | F | Sa | Su | M | Tu | W | Th | F | Sa | Su | M | Tu | W | Th | F | Sa | Su | M | Tu | W | | | | | | | |
|------|---|----|---|----|---|----|----|---|----|----|----|----|----|----|----|----|----|----|----|----|----|----|----|----|----|----|----|----|----|----|----|
| 2021 | 1 | 2 | 3 | 4 | 5 | 6 | 7 | 8 | 9 | 10 | 11 | 12 | 13 | 14 | 15 | 16 | 17 | 18 | 19 | 20 | 21 | 22 | 23 | 24 | 25 | 26 | 27 | 28 | 29 | 30 | 31 |
| | - | - | - | - | - | - | - | - | - | - | - | - | - | - | - | - | - | - | - | - | - | - | - | - | - | - | - | - | - | - | |

| Apr | Th | F | Sa | Su | M | Tu | W | Th | F | Sa | Su | M | Tu | W | Th | F | Sa | Su | M | Tu | W | Th | F | | | | | | | |
|------|----|---|----|----|---|----|---|----|---|----|----|----|----|----|----|----|----|----|----|----|----|----|----|----|----|----|----|----|----|----|
| 2021 | 1 | 2 | 3 | 4 | 5 | 6 | 7 | 8 | 9 | 10 | 11 | 12 | 13 | 14 | 15 | 16 | 17 | 18 | 19 | 20 | 21 | 22 | 23 | 24 | 25 | 26 | 27 | 28 | 29 | 30 |
| | - | - | - | - | - | - | - | - | - | - | - | - | - | - | - | - | - | - | - | - | - | - | - | - | - | - | - | - | - | - |

| May | Sa | Su | M | Tu | W | Th | F | Sa | Su | M | Tu | W | Th | F | Sa | Su | M | Tu | W | Th | F | Sa | Su | M | | | | | | | |
|------|----|----|---|----|---|----|---|----|----|----|----|----|----|----|----|----|----|----|----|----|----|----|----|----|----|----|----|----|----|----|----|
| 2021 | 1 | 2 | 3 | 4 | 5 | 6 | 7 | 8 | 9 | 10 | 11 | 12 | 13 | 14 | 15 | 16 | 17 | 18 | 19 | 20 | 21 | 22 | 23 | 24 | 25 | 26 | 27 | 28 | 29 | 30 | 31 |
| | - | - | - | - | - | - | - | - | - | - | - | - | - | - | - | - | - | - | - | - | - | - | - | - | - | - | - | - | - | - | |

| June | Tu | W | Th | F | Sa | Su | M | Tu | W | Th | F | Sa | Su | M | Tu | W | Th | F | Sa | Su | M | Tu | W | | | | | | | |
|------|----|---|----|---|----|----|---|----|---|----|----|----|----|----|----|----|----|----|----|----|----|----|----|----|----|----|----|----|----|----|
| 2021 | 1 | 2 | 3 | 4 | 5 | 6 | 7 | 8 | 9 | 10 | 11 | 12 | 13 | 14 | 15 | 16 | 17 | 18 | 19 | 20 | 21 | 22 | 23 | 24 | 25 | 26 | 27 | 28 | 29 | 30 |
| | - | - | - | - | - | - | - | - | - | - | - | - | - | - | - | - | - | - | - | - | - | - | - | - | - | - | - | - | - | |

| Jul | Th | F | Sa | Su | M | Tu | W | Th | F | Sa | Su | M | Tu | W | Th | F | Sa | Su | M | Tu | W | Th | F | Sa | | | | | | | |
|------|----|---|----|----|---|----|---|----|---|----|----|----|----|----|----|----|----|----|----|----|----|----|----|----|----|----|----|----|----|----|----|
| 2021 | 1 | 2 | 3 | 4 | 5 | 6 | 7 | 8 | 9 | 10 | 11 | 12 | 13 | 14 | 15 | 16 | 17 | 18 | 19 | 20 | 21 | 22 | 23 | 24 | 25 | 26 | 27 | 28 | 29 | 30 | 31 |
| | - | - | - | - | - | - | - | - | - | - | - | - | - | - | - | - | - | - | - | - | - | - | - | - | - | - | - | - | - | - | |

| Aug | Su | M | Tu | W | Th | F | Sa | Su | M | Tu | W | Th | F | Sa | Su | M | Tu | W | Th | F | Sa | Su | M | Tu | | | | | | | |
|------|----|---|----|---|----|---|----|----|---|----|----|----|----|----|----|----|----|----|----|----|----|----|----|----|----|----|----|----|----|----|----|
| 2021 | 1 | 2 | 3 | 4 | 5 | 6 | 7 | 8 | 9 | 10 | 11 | 12 | 13 | 14 | 15 | 16 | 17 | 18 | 19 | 20 | 21 | 22 | 23 | 24 | 25 | 26 | 27 | 28 | 29 | 30 | 31 |
| | - | - | - | - | - | - | - | - | - | - | - | - | - | - | - | - | - | - | - | - | - | - | - | - | - | - | - | - | - | - | |

| Sep | W | Th | F | Sa | Su | M | Tu | W | Th | F | Sa | Su | M | Tu | W | Th | F | Sa | Su | M | Tu | W | Th | | | | | | | |
|------|---|----|---|----|----|---|----|---|----|----|----|----|----|----|----|----|----|----|----|----|----|----|----|----|----|----|----|----|----|----|
| 2021 | 1 | 2 | 3 | 4 | 5 | 6 | 7 | 8 | 9 | 10 | 11 | 12 | 13 | 14 | 15 | 16 | 17 | 18 | 19 | 20 | 21 | 22 | 23 | 24 | 25 | 26 | 27 | 28 | 29 | 30 |
| | - | - | - | - | - | - | - | - | - | - | - | - | - | - | - | - | - | - | - | - | - | - | - | - | - | - | - | - | - | |

Gîte - Self Catering
 São João de Tarouca - Portugal
"Casa da Portaria"

9

[Book now](#)

Availability calendar - from : september 2021

| Oct | F | Sa | Su | M | Tu | W | Th | F | Sa | Su | M | Tu | W | Th | F | Sa | Su | M | Tu | W | Th | F | Sa | Su | | | | | | | |
|------|---|----|----|---|----|---|----|---|----|----|----|----|----|----|----|----|----|----|----|----|----|----|----|----|----|----|----|----|----|----|----|
| 2021 | 1 | 2 | 3 | 4 | 5 | 6 | 7 | 8 | 9 | 10 | 11 | 12 | 13 | 14 | 15 | 16 | 17 | 18 | 19 | 20 | 21 | 22 | 23 | 24 | 25 | 26 | 27 | 28 | 29 | 30 | 31 |
| - | - | - | - | - | - | - | - | - | - | - | - | - | - | - | - | - | - | - | - | - | - | - | - | - | - | - | - | - | - | - | |

| Nov | M | Tu | W | Th | F | Sa | Su | M | Tu | W | Th | F | Sa | Su | M | Tu | W | Th | F | Sa | Su | M | Tu | | | | | | | |
|------|---|----|---|----|---|----|----|---|----|----|----|----|----|----|----|----|----|----|----|----|----|----|----|----|----|----|----|----|----|----|
| 2021 | 1 | 2 | 3 | 4 | 5 | 6 | 7 | 8 | 9 | 10 | 11 | 12 | 13 | 14 | 15 | 16 | 17 | 18 | 19 | 20 | 21 | 22 | 23 | 24 | 25 | 26 | 27 | 28 | 29 | 30 |
| - | - | - | - | - | - | - | - | - | - | - | - | - | - | - | - | - | - | - | - | - | - | - | - | - | - | - | - | - | - | |

[Month : Next >>](#)

Rental rates - Gîte - Self Catering - Country House - from 10 to 14 Person(s)

| Rates | Night | Weekend | week | 2 weeks | Month |
|--|--------------------|-----------|------------------------------|---------|-------|
| ■ Low season | PHP12396* ↓ > 2 | PHP30990* | PHP55782* | - | - |
| ■ Mid season | - | - | PHP74376* (Saturday) | - | - |
| ■ High season | - | - | PHP148752* (Saturday) | - | - |
| ■ Festive specials | - | - | PHP179742* (Saturday) > 7 | - | - |

↓ Reducing rates (Check-in day) > Minimum Night

[Book now](#)

Booking conditions

- **Reservation**
 → Payment made upon reservation : 25% of rental sum
 → Payment balance : on handing over the keys

Accepted methods of payment

- Bank transfer (wire) • PayPal • Cash

[▶ Book now](#)

[▶ Contact the owner](#)

Contact directly the property owners

www.ph.ihaholidayads.com
Advert No.
16367
 >> [Book now](#) <<

Contact

Spoken languages



* Converted at the rate indicated : €100 = \$110 = £91 = PHP6197.99

Advert No. 16367

www.ph.ihaholidayads.com

