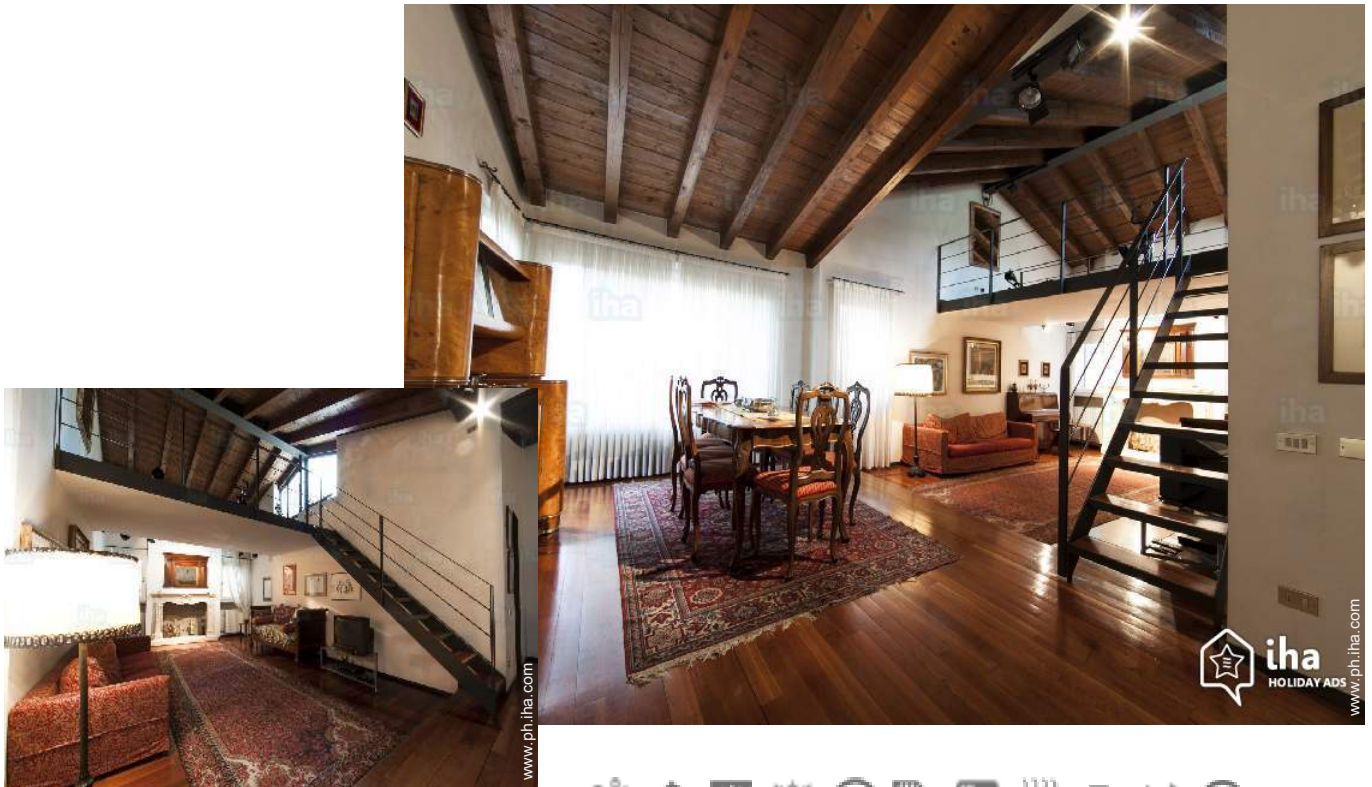


Gîte - Self Catering Verona "Agriturismo DELO"

A fine experience in our family house; a charming, comfortable and quiet House between the Hill and the River in the heart of Verona, a rooftop terrace 300 metres from the Roman amphitheatre and 10 minutes from the arena.



Gîte - Self Catering - Charming Main Farm House, attached home, 2 floors, shared entrance, in(on) a(an) Farm setting

Setting : enchanting, romantic

Capacity : from 20 to 30 person(s)
Bedroom(s) : 10

Verona - Verona Province (VR) - Veneto

Italy

Advert No. 37176

www.ph.ih.com



>> VACATION HOMES

DIRECT BY OWNERS



Gîte - Self Catering



Gîte - Self Catering - Charming Main Farm House, attached home, 2 floors, shared entrance, in(on) a(an) Farm setting

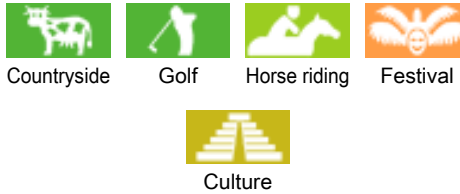
- **Ideal for all age groups, family**
- **View :** panoramic, unobscured, not overlooked, dominant, garden/park, Vineyards
- **Setting :** enchanting, romantic
- **Exposure :** South

" A refined experience life and Italian culture in a House between the Adige river and the Hill, 200 metres from the Roman amphitheatre and the stone bridge (Ponte Pietra), 10 minutes walk from the arena and Juliet's House. A large living room with fireplace of the 18th century, furniture authentic of the 19th century, an attic and a rooftop terrace panoramic; three bedrooms, two bathrooms (one with shower), a large kitchen with washing machine and dryer, wooden floor, air conditioning, free Wi - Fi. This is not a second home, a cold or anonymous, hotel where you can sleep just, but home built and furnished with taste and passion for the residence of the owners. A House that breathes culture and tradition. A « villa » of cities with large volumes, ideal for holidays, travel or tourism; It is an alternative effective and valid compared to ordinary hotels, to enjoy a good wine from Valpolicella in serenity: the magnificent Amarone della Valpolicella and the revision of the family. "

Assets

- **Swimming pool :**
Private swimming pool, rectangular (length 2m, width 2m), heated, illuminated, step ladder, outside shower (open from 'june 01' till 'september 15')
- **Parking :**
Parking uncovered : 14 internal, off road.
- **Advantages :**
Jacuzzi

Surroundings & location



" Ideal to live inside the cultural and artistic life of Verona; to attend important trade fairs enjoying the artistic wealth of a unique city; to enjoy the lyrical and theatrical season with a romantic stroll and visit the surroundings: to go to Venice, or Vicenza to visit the villas of Palladio, or in the magnificent Mantova di Mantegna or to see Lake Garda. Convenient for the station and the airport of Verona, allows easy access by train and by plane. "

Leisure

- **Leisure activities less than 12 miles :**
Bathing, canoeing, rafting, golf, tennis, riding school, pathway/broadwalk, coastal/forest paths, hiking, mountain bike (path), kite flying, parachuting, Microlights, flying (club), glider (club), horse trekking, mini-golf, hunting, fishing, fishing

- **Supervised :**
Dive school, tennis school, riding school

- **Attractions and relaxation :**
Bar/pub, discotheque, restaurant, movie theater, open air summer movie theater, park and garden, leisure park, zoo/animal park, nature reserve, exhibition center, art gallery, historical site, museum, theater, summer theater, opera house, festivals, antiques & bric-a-brac, local craftstore, cellar and wine tasting, thermal baths, sauna, steam baths, health spa, beauticians, fitness center

Surroundings

- **Locality :**
Ski slopes 30km
Ice skating rink 30km
Heated swimming pool 5km
Sandy beach 30km
Public swimming pool 5km
Public tennis court 5km
18 hole golf course 30km
Flying clubs 15km
Windsurfing spots 30km
Watersports centre 30km
River 10km
Lake 30km
Mountain range 30km
Slipway 30km
Via ferrata-alpinism 30km

- **Amenities :**
Downtown 7,5km
Bus stop / bus station 1km
Bike/mountain bike hire 4km
Car rental 10km
Breadstore 4km

Local stores 7,5km
Supermarket 5km
High class retailers 7,5km
Hairdressing salon 4km
Internet cafe 7,5km
Mail office 1km
Bank 5km
Drugstore 5km
Hospital 10km



sitting room



sitting room



sitting room

Interior

- **Receive up to :**

from 20 to 30 person(s) (30 adults)

- **Liveable floor area :**

800m²

- **Interior layout :**

10 bedroom(s), 11 bathroom, 11 shower room, 11 toilets, living room 28m², sitting room 28m², dining room, reading room, laundry room, veranda

- **Sleeps - bed(s) :**

9 full bed(s), 9 king-size bed(s), 2 sleeper sofa(s) 2 pers, 2 twin bed(s), 1 sleeper sofa (s) 1 pers, 1 baby cradle, 10 possible extra bed(s)

- **Guest facilities :**

Fireplace, T.V., book collection, phone, fax, computer, internet access, high speed internet access, wifi, wardrobe, Hanging wardrobe, safe deposit box, hair dryer, fly screens, fully air-conditioned, mobile cool air fan, central heating, electric heating, Drapes, Double glazed, remote controlled gates

- **Appliances :**

Washing machine, clothes dryer, iron, ironing board

Exterior

- **Ground surface :**

3 ha

- **Outside setting :**

Private courtyard > 1000m², enclosed grounds 3 ha, yard 500m², landscaped yard > 1000m², lawn > 1000m², woodsy 2500m², olive grove 6000m², kitchen garden 100m²

- **Outside amenities :**

Summer living area, yard table(s), 20 yard seat(s), parasol, yard seated area, 3 chaise (s) longue(s), 10 sun recliner(s), outside shower facilities



separate kitchen

Services

- **washing :**

Sheets, Towels, Comforter(s), Pillows

- **Single family home :**

Cleaning, Parking, Airport transfers supplement (+PHP2961*)

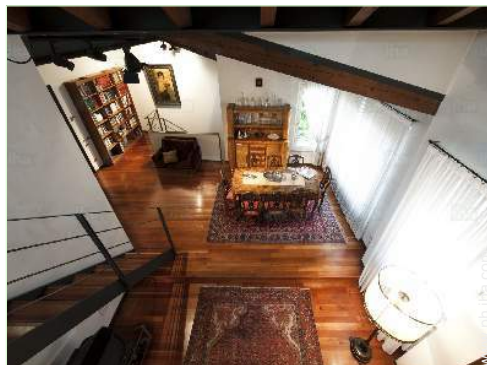
- **Restauration :**

Breakfast

For your guidance

- **For your guidance**

Kids welcome
No pet allowed
Non smoking rental, cell phone network coverage, personal transport advisable
Water : hot/cold
Local voltage supply : 220-240V / 50Hz



sitting room

Photo album - 1



sitting room



sitting room



sitting room



sitting room



sitting room



separate kitchen

Photo album - 2



master bedroom



large bedroom



bedroom



bathroom



shower room



overall view

Location



Location & Access



GPS coordinates in degrees, minutes, seconds: Latitude 45°26'59"N - Longitude 10°59'51"E (Dwelling)

Address

→ Via G.B. Moschini 12
37129 Verona

- Venice : (105km)
- Mantua : (40km)

• Freeway (exit) VERONA EST

→ Verona, Verona Province, Veneto, Italy
→ Distance : 12km
→ Time : 10'

• Airport Villafranca

→ Verona, Verona Province, Veneto, Italy
→ Distance : 28km
→ Time : 20'

• Railroad station Verona Porta Nuova

→ Verona, Verona Province, Veneto, Italy
→ Distance : 10km
→ Time : 15'

- Vicenza : (45km)

Contact

Spoken languages



Availability calendar - from : january 2018

Jan	M	Tu	W	Th	F	Sa	Su	M	Tu	W	Th	F	Sa	Su	M	Tu	W	Th	F	Sa	Su	M	Tu	W							
2018	1	2	3	4	5	6	7	8	9	10	11	12	13	14	15	16	17	18	19	20	21	22	23	24	25	26	27	28	29	30	31
																						-	-	-	-	-	-	-	-	-	-

Feb	Th	F	Sa	Su	M	Tu	W	Th	F	Sa	Su	M	Tu	W	Th	F	Sa	Su	M	Tu	W								
2018	1	2	3	4	5	6	7	8	9	10	11	12	13	14	15	16	17	18	19	20	21	22	23	24	25	26	27	28	
	-	-	-	-	-	-	-	-	-	-	-	-	-	-	-	-	-	-	-	-	-	-	-	-	-	-	-	-	-

Mar	Th	F	Sa	Su	M	Tu	W	Th	F	Sa	Su	M	Tu	W	Th	F	Sa	Su	M	Tu	W	Th	F	Sa							
2018	1	2	3	4	5	6	7	8	9	10	11	12	13	14	15	16	17	18	19	20	21	22	23	24	25	26	27	28	29	30	31
	-	-	-	-	-	-	-	-	-	-	-	-	-	-	-	-	-	-	-	-	-	-	-	-	-	-	-	-	-	-	

Apr	Su	M	Tu	W	Th	F	Sa	Su	M	Tu	W	Th	F	Sa	Su	M	Tu	W	Th	F	Sa	Su	M							
2018	1	2	3	4	5	6	7	8	9	10	11	12	13	14	15	16	17	18	19	20	21	22	23	24	25	26	27	28	29	30
	-	-	-	-	-	-	-	-	-	-	-	-	-	-	-	-	-	-	-	-	-	-	-	-	-	-	-	-	-	-

May	Tu	W	Th	F	Sa	Su	M	Tu	W	Th	F	Sa	Su	M	Tu	W	Th	F	Sa	Su	M	Tu	W	Th							
2018	1	2	3	4	5	6	7	8	9	10	11	12	13	14	15	16	17	18	19	20	21	22	23	24	25	26	27	28	29	30	31
	-	-	-	-	-	-	-	-	-	-	-	-	-	-	-	-	-	-	-	-	-	-	-	-	-	-	-	-	-	-	

June	F	Sa	Su	M	Tu	W	Th	F	Sa	Su	M	Tu	W	Th	F	Sa	Su	M	Tu	W	Th	F	Sa							
2018	1	2	3	4	5	6	7	8	9	10	11	12	13	14	15	16	17	18	19	20	21	22	23	24	25	26	27	28	29	30
	-	-	-	-	-	-	-	-	-	-	-	-	-	-	-	-	-	-	-	-	-	-	-	-	-	-	-	-	-	-

Jul	Su	M	Tu	W	Th	F	Sa	Su	M	Tu	W	Th	F	Sa	Su	M	Tu	W	Th	F	Sa	Su	M	Tu							
2018	1	2	3	4	5	6	7	8	9	10	11	12	13	14	15	16	17	18	19	20	21	22	23	24	25	26	27	28	29	30	31
	-	-	-	-	-	-	-	-	-	-	-	-	-	-	-	-	-	-	-	-	-	-	-	-	-	-	-	-	-	-	

Aug	W	Th	F	Sa	Su	M	Tu	W	Th	F	Sa	Su	M	Tu	W	Th	F	Sa	Su	M	Tu	W	Th	F							
2018	1	2	3	4	5	6	7	8	9	10	11	12	13	14	15	16	17	18	19	20	21	22	23	24	25	26	27	28	29	30	31
	-	-	-	-	-	-	-	-	-	-	-	-	-	-	-	-	-	-	-	-	-	-	-	-	-	-	-	-	-	-	

Sep	Sa	Su	M	Tu	W	Th	F	Sa	Su	M	Tu	W	Th	F	Sa	Su	M	Tu	W	Th	F	Sa	Su							
2018	1	2	3	4	5	6	7	8	9	10	11	12	13	14	15	16	17	18	19	20	21	22	23	24	25	26	27	28	29	30
	-	-	-	-	-	-	-	-	-	-	-	-	-	-	-	-	-	-	-	-	-	-	-	-	-	-	-	-	-	-

Oct	M	Tu	W	Th	F	Sa	Su	M	Tu	W	Th	F	Sa	Su	M	Tu	W	Th	F	Sa	Su	M	Tu	W							
2018	1	2	3	4	5	6	7	8	9	10	11	12	13	14	15	16	17	18	19	20	21	22	23	24	25	26	27	28	29	30	31
	-	-	-	-	-	-	-	-	-	-	-	-	-	-	-	-	-	-	-	-	-	-	-	-	-	-	-	-	-	-	

Availability calendar - from : october 2018

Nov	Th	F	Sa	Su	M	Tu	W	Th	F	Sa	Su	M	Tu	W	Th	F	Sa	Su	M	Tu	W	Th	F	Sa	Su	M	Tu	W	Th	F
2018	1	2	3	4	5	6	7	8	9	10	11	12	13	14	15	16	17	18	19	20	21	22	23	24	25	26	27	28	29	30
-	-	-	-	-	-	-	-	-	-	-	-	-	-	-	-	-	-	-	-	-	-	-	-	-	-	-	-	-	-	-

Dec	Sa	Su	M	Tu	W	Th	F	Sa	Su	M	Tu	W	Th	F	Sa	Su	M	Tu	W	Th	F	Sa	Su	M							
2018	1	2	3	4	5	6	7	8	9	10	11	12	13	14	15	16	17	18	19	20	21	22	23	24	25	26	27	28	29	30	31
-	-	-	-	-	-	-	-	-	-	-	-	-	-	-	-	-	-	-	-	-	-	-	-	-	-	-	-	-	-	-	

[Month : Next >>](#)

Rental rates - Gîte - Self Catering - Charming Main Farm House - from 20 to 30 Person(s)

Rates	Night	Weekend	week	2 weeks	Month
 High season	PHP19545* > 3	PHP59227*	PHP88841*	PHP165836*	PHP313903*
 Promotional period	-	-	-	PHP153990*	PHP313903*

> Minimum Night

[Book now](#)

Booking conditions

• Reservation

→ Payment made upon reservation :
40% of rental sum
→ Payment balance :
on handing over the keys

• rentals

→ Service charges included
→ Day tax in addition
→ Cleaning charge on departure included
→ Anticipated supplement for :
- supplementary bed(s)

[▶ Book now](#)

[▶ Contact the owner](#)

Accepted methods of payment

• Visa/Delta/Electro • Switch/Maestro •
Bank transfer (wire) • MasterCard/
EuroCard • Cash

Contact directly the property owners

www.ph.ih.com

Advert No.

37176

[>> Book now <<](#)

Contact

Spoken languages



* Converted at the rate indicated : €100 = \$117.29 = £89.59 = PHP5922.7

Advert No. 37176

www.ph.ih.com

