

Luxury vacation rental Templários "Moradia House Villa"



Luxury House, detached, 2 floors, separate entrance, in(on) a(an) Private property

Setting : waterfront, heavenly

Capacity : from 1 to 10 person(s)

Bedroom(s) : 4

Room(s) : 8



Gay friendly ()
Family Holiday Destinations ()



Theme breaks
Valentine's Day

Ferreira do Zêzere - Santarém District - Lisbon and Tagus Valley
Portugal

Advert No. 20638

www.ph.ih.com



Luxury vacation rental



Luxury House, detached, 2 floors, separate entrance, in(on) a(an) Private property

- **Ideal for all age groups, honeymoon**
- **View :** panoramic, mountain, country side, river, lake, fantastic sunset
- **Setting :** waterfront, heavenly
- **Exposure :** South

Assets

- **Parking :**
Parking uncovered : 3 internal.



toilets

Surroundings & location



Ocean



Horse riding



Fishing

Leisure

- **Leisure activities less than 12 miles :**

Bathing, pedalo, snorkelling, banana boat, water skiing, jet ski, surfing, windsurfing, sailing, kite surfing, canoeing, tennis, riding school, pathway/broadwalk, coastal/forest paths, rock climbing, mountain bike (path), flying (club), boat trips, horse trekking, mini-golf, skate board (ramps), go-karting, volleyball, paintball, fishing, fishing

- **Supervised :**

Dive school, riding school

- **Attractions and relaxation :**

Bar/pub, restaurant, park and garden, historical site, local craftstore, natural spring baths

Surroundings

- **Locality :**

Public swimming pool 50m
Watersports centre 500m
Waterfall 800m
River <50m
Stretch of water <50m
Lake <50m
Forest <50m
Mountain range 1km
Slipway 50m
Jetski slipway 50m

- **Amenities :**

Kindergarten 10km
Downtown 10km
Bus stop / bus station 10km
Bike/mountain bike hire 100m
Car rental 20km
Boat rental 100m
Scuba diving material hire 100m
Household linens for hire/laundry services <50m
Breadstore 10km
Caterer 100m
Local stores 100m
Supermarket 10km
Hairdressing salon 10km
Internet cafe 10km
Mail office 10km
Bank 10km
ATM 10km
Drugstore 10km
Doctor 10km
Nurse 10km
Hospital 10km
Dispensary 10km



interior



full bed(s)



Interior

- **Receive up to :**
from 1 to 10 person(s) (8 adults, 2 kids)
- **Liveable floor area :**
250m²
- **Interior layout :**
8 Room(s), 4 bedroom(s), 2 bathroom, 2 shower room, 1 toilets, living room 20m², sitting room 20m², separate kitchen, dining room, cosy nook, tv den, walk-in closet, veranda
- **Sleeps - bed(s) :**
1 full bed(s), 1 queen-size bed(s), 6 twin bed (s), sleeper sofa(s) 1 pers, 1 twin storage bed 1 pers, 1 baby cradle, possible extra bed(s)
- **Guest facilities :**
Fireplace, T.V., DVD player, book collection, t.v points, cable/satelite, cupboard, Hanging wardrobe, hair dryer, fly screens, partly air-conditioned, mobile cool air fan, electric heating, Glazed in area, Drapes, entry phone system, fire alarm, remote controlled gates
- **Appliances :**
Crockery/flatware, kitchen utensils, cafetiere, electric coffee maker, electric espresso coffee maker, electric kettle, toaster, juicer, food processor, meat broiler, electric stove, electric hobs, oven, micro-wave oven, extractor hood, refridgerator, deep freeze, dish washer, washing machine, vacuum cleaner, iron, ironing board

Exterior

- **Ground surface :**
900m²
- **Outside accommodation :**
Terrace 20m², covered terrace 20m², balcony 30m²
- **Outside setting :**
Private courtyard 60m², enclosed grounds 900m², yard, river
- **Outside amenities :**
BBQ, yard table(s), 8 yard seat(s), parasol



kitchen

Services

- **washing :**
Sheets, Towels, Linen, Beach towels supplement (1 X / per week +PHP1264*), Comforter(s), Pillows
- **Single family home :**
Cleaning supplement (+PHP4740*), Cleaning on departure supplement, Airport transfers supplement
- **Personnel :**
Laundry supplement, Baby sitting supplement, Massage supplement, Guide supplement
- **Restauration :**
Breakfast supplement, Locally produced meals supplement

For your guidance

- **For your guidance**
Kids welcome
Pets friendly
Cell phone network coverage, personal transport advisable
Water : hot/cold
Local voltage supply : 220V / 60Hz
Electricity supply : mains



Guest facilities

Photo album - 1



toilets



full bed(s)



interior



Guest facilities

Photo album - 2



kitchen



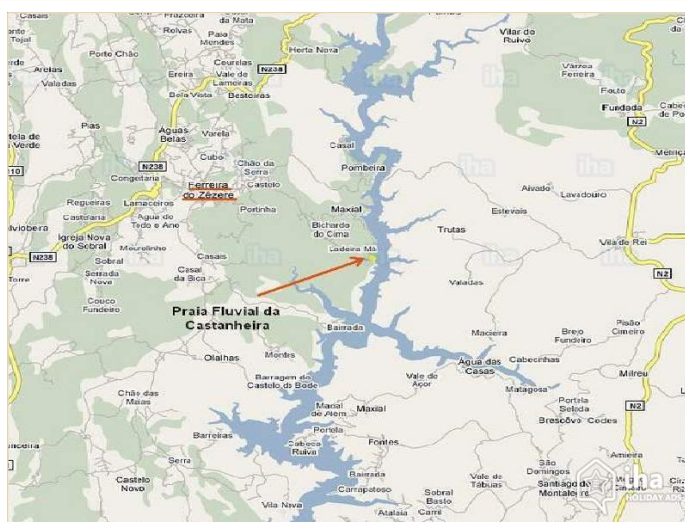
Outside setting



[Theme breaks](#)

Valentine's Day

Route map



Location & Access



GPS coordinates in degrees, minutes, seconds: Latitude 39° 40'39"N - Longitude 8° 14'3"W ([Dwelling](#))

Address

→ Lago Azul - Castanheira
2240 Ferreira do Zêzere

• [Airport Lisbon Portela](#)

→ Lisbon, Lisbon District, Lisbon and Tagus Valley, Portugal
→ Distance : 150km
→ Time : 1h30'

• [Airport Porto Francisco Sá Carneiro](#)

→ Porto, Porto District, Norte Region (Portugal), Portugal
→ Distance : 180km
→ Time : 2h

• [Bus station Ferreira do Zêzere](#)

→ Ferreira do Zêzere, Santarém District, Lisbon and Tagus Valley, Portugal
→ Distance : 10km
→ Time : 10'

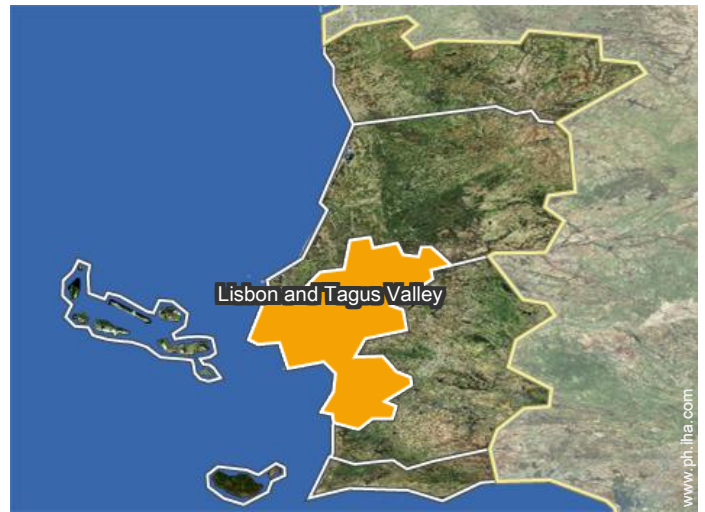
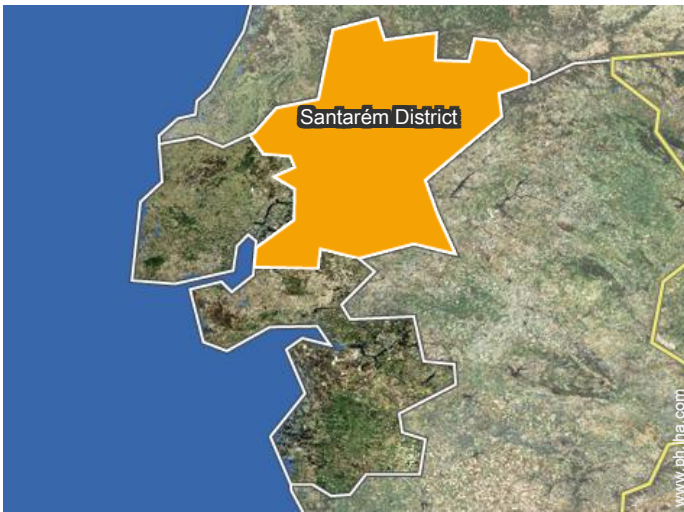
- Ferreira do Zêzere : (10km)
- Tomar : (20km)
- Fátima : (40km)

Contact

Spoken languages



Location



Luxury vacation rental
Santarém District - Lisbon and Tagus Valley
"Moradia House Villa"

[Book now](#)

Availability calendar - from : february 2018

Feb	Th	F	Sa	Su	M	Tu	W	Th	F	Sa	Su	M	Tu	W	Th	F	Sa	Su	M	Tu	W	Th	F	Sa	Su	M	Tu	W
2018	1	2	3	4	5	6	7	8	9	10	11	12	13	14	15	16	17	18	19	20	21	22	23	24	25	26	27	28

Mar	Th	F	Sa	Su	M	Tu	W	Th	F	Sa	Su	M	Tu	W	Th	F	Sa	Su	M	Tu	W	Th	F	Sa	Su	M	Tu	W	Th	F	Sa
2018	1	2	3	4	5	6	7	8	9	10	11	12	13	14	15	16	17	18	19	20	21	22	23	24	25	26	27	28	29	30	31
	-	-	-	-	-	-	-	-	-	-	-	-	-	-	-	-	-	-	-	-	-	-	-	-	-	-	-	-	-	-	

Apr	Su	M	Tu	W	Th	F	Sa	Su	M	Tu	W	Th	F	Sa	Su	M	Tu	W	Th	F	Sa	Su	M	Tu	W	Th	F	Sa	Su	M
2018	1	2	3	4	5	6	7	8	9	10	11	12	13	14	15	16	17	18	19	20	21	22	23	24	25	26	27	28	29	30
	-	-	-	-	-	-	-	-	-	-	-	-	-	-	-	-	-	-	-	-	-	-	-	-	-	-	-	-	-	

May	Tu	W	Th	F	Sa	Su	M	Tu	W	Th	F	Sa	Su	M	Tu	W	Th	F	Sa	Su	M	Tu	W	Th	F	Sa	Su	M	Tu	W	Th
2018	1	2	3	4	5	6	7	8	9	10	11	12	13	14	15	16	17	18	19	20	21	22	23	24	25	26	27	28	29	30	31
	-	-	-	-	-	-	-	-	-	-	-	-	-	-	-	-	-	-	-	-	-	-	-	-	-	-	-	-	-	-	

June	F	Sa	Su	M	Tu	W	Th	F	Sa	Su	M	Tu	W	Th	F	Sa	Su	M	Tu	W	Th	F	Sa							
2018	1	2	3	4	5	6	7	8	9	10	11	12	13	14	15	16	17	18	19	20	21	22	23	24	25	26	27	28	29	30
	-	-	-	-	-	-	-	-	-	-	-	-	-	-	-	-	-	-	-	-	-	-	-	-	-	-	-	-	-	

Jul	Su	M	Tu	W	Th	F	Sa	Su	M	Tu	W	Th	F	Sa	Su	M	Tu	W	Th	F	Sa	Su	M	Tu	W	Th	F	Sa	Su	M	Tu
2018	1	2	3	4	5	6	7	8	9	10	11	12	13	14	15	16	17	18	19	20	21	22	23	24	25	26	27	28	29	30	31
	-	-	-	-	-	-	-	-	-	-	-	-	-	-	-	-	-	-	-	-	-	-	-	-	-	-	-	-	-		

Aug	W	Th	F	Sa	Su	M	Tu	W	Th	F	Sa	Su	M	Tu	W	Th	F	Sa	Su	M	Tu	W	Th	F	Sa	Su	M	Tu	W	Th	F
2018	1	2	3	4	5	6	7	8	9	10	11	12	13	14	15	16	17	18	19	20	21	22	23	24	25	26	27	28	29	30	31
	-	-	-	-	-	-	-	-	-	-	-	-	-	-	-	-	-	-	-	-	-	-	-	-	-	-	-	-	-	-	

Sep	Sa	Su	M	Tu	W	Th	F	Sa	Su	M	Tu	W	Th	F	Sa	Su	M	Tu	W	Th	F	Sa	Su							
2018	1	2	3	4	5	6	7	8	9	10	11	12	13	14	15	16	17	18	19	20	21	22	23	24	25	26	27	28	29	30
	-	-	-	-	-	-	-	-	-	-	-	-	-	-	-	-	-	-	-	-	-	-	-	-	-	-	-	-	-	

Oct	M	Tu	W	Th	F	Sa	Su	M	Tu	W	Th	F	Sa	Su	M	Tu	W	Th	F	Sa	Su	M	Tu	W							
2018	1	2	3	4	5	6	7	8	9	10	11	12	13	14	15	16	17	18	19	20	21	22	23	24	25	26	27	28	29	30	31
	-	-	-	-	-	-	-	-	-	-	-	-	-	-	-	-	-	-	-	-	-	-	-	-	-	-	-	-	-		

Nov	Th	F	Sa	Su	M	Tu	W	Th	F	Sa	Su	M	Tu	W	Th	F	Sa	Su	M	Tu	W	Th	F							
2018	1	2	3	4	5	6	7	8	9	10	11	12	13	14	15	16	17	18	19	20	21	22	23	24	25	26	27	28	29	30
	-	-	-	-	-	-	-	-	-	-	-	-	-	-	-	-	-	-	-	-	-	-	-	-	-	-	-	-	-	



Luxury vacation rental
Ferreira do Zêzere - Portugal
"Moradia House Villa"

10
[Book now](#)



Availability calendar - from : november 2018

Dec	Sa	Su	M	Tu	W	Th	F	Sa	Su	M	Tu	W	Th	F	Sa	Su	M	Tu	W	Th	F	Sa	Su	M							
2018	1	2	3	4	5	6	7	8	9	10	11	12	13	14	15	16	17	18	19	20	21	22	23	24	25	26	27	28	29	30	31
-	-	-	-	-	-	-	-	-	-	-	-	-	-	-	-	-	-	-	-	-	-	-	-	-	-	-	-	-	-	-	

Jan	Tu	W	Th	F	Sa	Su	M	Tu	W	Th	F	Sa	Su	M	Tu	W	Th	F	Sa	Su	M	Tu	W	Th							
2019	1	2	3	4	5	6	7	8	9	10	11	12	13	14	15	16	17	18	19	20	21	22	23	24	25	26	27	28	29	30	31
-	-	-	-	-	-	-	-	-	-	-	-	-	-	-	-	-	-	-	-	-	-	-	-	-	-	-	-	-	-	-	

[Month : Next >>](#)

Rental rates - Luxury House - from 1 to 10 Person(s)

Rates	Night	Weekend	week	2 weeks	Month
 Low season	PHP6321* > 2	PHP18962*	PHP44244*	-	-
 Mid season	PHP9481*	PHP22122*	PHP63206*	PHP113770*	-
 High season	PHP15801*	PHP31603*	PHP91648*	PHP158014*	-
 Festive specials	-	-	PHP101129*	-	-
 Promotional period	PHP7585* > 4	PHP22122*	PHP63206*	-	-

> Minimum Night

[Book now](#)



interior



Guest facilities



toilets



full bed(s)

Booking conditions

• Reservation

- Payment made upon reservation : 50% of rental sum
- Payment balance : on handing over the keys
- Deposit required

• rentals

- Service charges included
- Day tax included
- Cleaning charge levy on departure : PHP3160*
- Anticipated supplement for :
 - supplementary bed(s)
 - firewood

Accepted methods of payment

- Bank transfer (wire) • Cash

[▶ Book now](#)

[▶ Contact the owner](#)

Contact directly the property owners

www.ph.ih.com

Advert No.

20638

>> [Book now](#) <<

Contact

Spoken languages



* Converted at the rate indicated : €100 = \$123.46 = £88.94 = PHP6320.57

Advert No. 20638

www.ph.ih.com

