

# Luxury vacation rental Nakutakoin "Lagoon View"

Designer's Home, facing the Lagoon, doorstep of Noumea. Private access to the sea and breathtaking view! For 2 to 6 people, or 2 more (on demand).



**Luxury Villa**, detached, 3 floors, separate entrance, in(on) a(an) Private property

Setting : waterfront, exclusive

Capacity : from 2 to 6 person(s)

Bedroom(s) : 4

**Nakutakoin - South Province - Grande Terre (New Caledonia)**  
**New Caledonia**

Reservation : +687 (0) 232380 (New Caledonia)

Advert No. 17816

[www.ph.ih.com](http://www.ph.ih.com)



# Luxury vacation rental South Province - Grande Terre (New Caledonia) "Lagoon View"

2

[Book now](#)

## Luxury vacation rental



Luxury Villa, detached, 3 floors, separate entrance, in(on) a(an) Private property

- **Ideal for all age groups, family**
- **View** : panoramic, not overlooked, sea/ocean, mountain, swimming pool, fantastic sunset
- **Setting** : waterfront, exclusive

" Welcome to this marvelous place! The house faces a wide bay that should entice you to the practice of stand-up paddle, canoe (you'll start from the bottom of the garden), or to a walk by the sea. Golf (18 holes), horseback riding, hiking along the river or on a path of long walks are 10 to 20 minutes away by car. Access to Noumea, restaurants, leisure and tourism activities is easy (direct by express way). Ideal for 2 to 6 people (2 extra guests possible on demand for a price). 1 large living room (55 m2), 4 bedrooms (2 with double beds, 2 with single bed), more than 140 m2 of terraces and decks, surrounded by a tropical garden of 3000 m<sup>2</sup> with a private barbecue area by the sea. You will enjoy the exclusive access to the house. "

## Assets

- **Swimming pool** :  
Private swimming pool, rectangular (length 9,50m, width 4m), illuminated, steps in
- **Parking** :  
Parking uncovered : 2 internal, 2 off road.

**Benefits :**  
Private beach

## Surroundings & location



Ocean



Golf



Fishing

" Land of contrasts, pristine land... New-Caledonia is a diverse and unique destination. Bathed by clear waters at the heart of the Pacific Ocean, lulled year round by gentle trade winds, it has more to offer than just its heavenly beaches and brilliant sunshine. Prepare to put diving (or scuba diving), sailing, fishing, discovering wild islet, golf, horse riding, hiking. But also: shopping, gastronomic experience, clubbing... and so on, on your "to do list". Do you need help to prepare your visit? We are available for you. Feel free to ask... First step : Would you like to read more about actual leisure and tourism activities? Ask us for a PDF copy of The New Caledonia WEEKLY, a free newsletter designed for visitors. We will be more than pleased to rush it to you. "

### Leisure

- **Leisure activities less than 12 miles** :  
Snorkelling, scuba diving, jet ski, surfing, windsurfing, sailing, kite surfing, golf, tennis, hiking, parachuting, flying (club), boat trips, skate board (ramps), go-karting, ten-pin bowling, paintball, hunting, acrobatic, fishing, deep-sea fishing, pétanque field
- **Supervised** :  
Sailing school, dive school, tennis school
- **Attractions and relaxation** :  
Bar/pub, discotheque, restaurant, movie theater, karaoke, park and garden, sea world, nature reserve, exhibition center, art gallery, historical site, museum, theater, local craftstore, cellar and wine tasting, casino, sauna, steam baths, health spa, beauticians, fitness center

### Surroundings

- **Locality** :  
Sea/ocean <50m  
Sandy beach 3km  
Rocky beach <50m  
18 hole golf course 5km  
Flying clubs 20km  
Windsurfing spots 15km  
Surfing spots 15km  
River 3km  
Lake 50km  
Forest 5km  
Slipway 3km  
Jetski slipway <50m
- **Amenities** :  
Village center 5km  
Downtown 15km  
Car rental  
Boat rental 15km  
Scuba diving material hire 15km  
Breadstore 500m

Supermarket 500m  
Mail office 5km  
Bank 5km  
ATM 5km  
Drugstore 5km



Luxury Villa



Advert No. 17816

[www.ph.ih.com](http://www.ph.ih.com)





Swimming pool

### Interior

- **Receive up to :**  
from 2 to 6 person(s)
- **Liveable floor area :**  
220m<sup>2</sup>
- **Interior layout :**  
4 bedroom(s), 2 shower room, 1 toilets, living room 60m<sup>2</sup>, separate kitchen, dining area, tv den, walk-in closet, reception hall, laundry room, loggia
- **Sleeps - bed(s) :**  
2 queen-size bed(s), 2 twin bed(s), 2 possible extra bed(s)
- **Guest facilities :**  
Fireplace, T.V., hi-fi system, phone, cable/satelite, high speed internet access, wifi, partly air-conditioned, electric shutters
- **Appliances :**  
Kitchen utensils, electric coffee maker, electric kettle, toaster, electric stove, oven, micro-wave oven, extractor hood, refridgerator, deep freeze, dish washer, washing machine, vacuum cleaner, iron, ironing board

### Exterior

- **Ground surface :**  
3000m<sup>2</sup>
- **Outside accommodation :**  
Terrace 20m<sup>2</sup>, covered terrace 18m<sup>2</sup>, roof terrace 18m<sup>2</sup>, balcony 45m<sup>2</sup>
- **Outside setting :**  
Tropical garden > 1000m<sup>2</sup>, lawn
- **Outside amenities :**  
Yard table(s), 8 yard seat(s), 4 chaise(s) longue(s)



### Services

- **washing :**  
Sheets (1 X / per week), Towels (1 X / per week), Linen (1 X / per week), Comforter(s), Pillows
- **Single family home :**  
Cleaning on departure, Yard/swimming pool maintenance (1 X / per week), Parking

### For your guidance

- **For your guidance**  
Kids welcome  
No pet allowed  
Non smoking rental, cell phone network coverage, personal transport advisable  
Water : hot/cold  
Local voltage supply : 220-240V / 50Hz  
Electricity supply : mains



bedroom

Floor plan

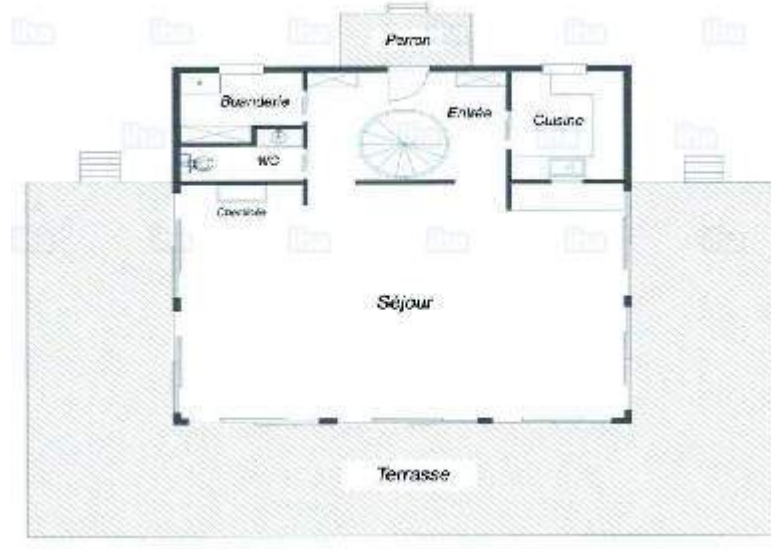


Photo album - 1



Luxury Villa



Swimming pool

Photo album - 2



bedroom



panorama




## Location



## Location & Access

" It is easy to access to the home from International Airport Nouméa-La Tontouta by an express way. From the house it is also very easy to access to whatever place on La Grande Terre no matter the traffic in downtown Nouméa. "

 GPS coordinates in degrees, minutes, seconds: Latitude 22°10'35"S - Longitude 166°24'40"E ([Dwelling](#))

### Address

→ 98830 Nakutakoin

• [Airport La Tontouta](#)

→ Nouméa, South Province, Grande Terre (New Caledonia), New Caledonia

→ Distance : 35km

→ Time : 30'

• [Freeway \(exit\) RT2 Savexpress](#)

→ Nouméa, South Province, Grande Terre (New Caledonia), New Caledonia

→ Distance : 10km

→ Time : 10'

• Nouméa : (15km)

• Païta : (12km)

• Le Mont Dore (New Caledonia) : (25km)

## Contact

Spoken languages



Luxury vacation rental  
 South Province - Grande Terre (New Caledonia)  
**"Lagoon View"**

[Book now](#)

Availability calendar - from : october 2017

| Oct  | Su | M | Tu | W | Th | F | Sa | Su | M | Tu | W  | Th | F  | Sa | Su | M  | Tu | W  | Th | F  | Sa | Su | M  | Tu |    |    |    |    |    |    |    |
|------|----|---|----|---|----|---|----|----|---|----|----|----|----|----|----|----|----|----|----|----|----|----|----|----|----|----|----|----|----|----|----|
| 2017 | 1  | 2 | 3  | 4 | 5  | 6 | 7  | 8  | 9 | 10 | 11 | 12 | 13 | 14 | 15 | 16 | 17 | 18 | 19 | 20 | 21 | 22 | 23 | 24 | 25 | 26 | 27 | 28 | 29 | 30 | 31 |
|      |    |   |    |   |    |   |    |    |   |    |    |    |    |    |    |    |    |    |    |    |    |    |    |    |    |    |    |    |    |    |    |

| Nov  | W | Th | F | Sa | Su | M | Tu | W | Th | F  | Sa | Su | M  | Tu | W  | Th | F  | Sa | Su | M  | Tu | W  | Th |    |    |    |    |    |    |    |
|------|---|----|---|----|----|---|----|---|----|----|----|----|----|----|----|----|----|----|----|----|----|----|----|----|----|----|----|----|----|----|
| 2017 | 1 | 2  | 3 | 4  | 5  | 6 | 7  | 8 | 9  | 10 | 11 | 12 | 13 | 14 | 15 | 16 | 17 | 18 | 19 | 20 | 21 | 22 | 23 | 24 | 25 | 26 | 27 | 28 | 29 | 30 |
|      | - | -  | - | -  | -  | - | -  | - | -  | -  | -  | -  | -  | -  | -  | -  | -  | -  | -  | -  | -  | -  | -  | -  | -  | -  | -  | -  | -  | -  |

| Dec  | F | Sa | Su | M | Tu | W | Th | F | Sa | Su | M  | Tu | W  | Th | F  | Sa | Su | M  | Tu | W  | Th | F  | Sa | Su |    |    |    |    |    |    |    |
|------|---|----|----|---|----|---|----|---|----|----|----|----|----|----|----|----|----|----|----|----|----|----|----|----|----|----|----|----|----|----|----|
| 2017 | 1 | 2  | 3  | 4 | 5  | 6 | 7  | 8 | 9  | 10 | 11 | 12 | 13 | 14 | 15 | 16 | 17 | 18 | 19 | 20 | 21 | 22 | 23 | 24 | 25 | 26 | 27 | 28 | 29 | 30 | 31 |
|      | - | -  | -  | - | -  | - | -  | - | -  | -  | -  | -  | -  | -  | -  | -  | -  | -  | -  | -  | -  | -  | -  | -  | -  | -  | -  | -  | -  | -  |    |

| Jan  | M | Tu | W | Th | F | Sa | Su | M | Tu | W  | Th | F  | Sa | Su | M  | Tu | W  | Th | F  | Sa | Su | M  | Tu | W  |    |    |    |    |    |    |    |
|------|---|----|---|----|---|----|----|---|----|----|----|----|----|----|----|----|----|----|----|----|----|----|----|----|----|----|----|----|----|----|----|
| 2018 | 1 | 2  | 3 | 4  | 5 | 6  | 7  | 8 | 9  | 10 | 11 | 12 | 13 | 14 | 15 | 16 | 17 | 18 | 19 | 20 | 21 | 22 | 23 | 24 | 25 | 26 | 27 | 28 | 29 | 30 | 31 |
|      | - | -  | - | -  | - | -  | -  | - | -  | -  | -  | -  | -  | -  | -  | -  | -  | -  | -  | -  | -  | -  | -  | -  | -  | -  | -  | -  | -  | -  |    |

| Feb  | Th | F | Sa | Su | M | Tu | W | Th | F | Sa | Su | M  | Tu | W  | Th | F  | Sa | Su | M  | Tu | W  |    |    |    |    |    |    |    |
|------|----|---|----|----|---|----|---|----|---|----|----|----|----|----|----|----|----|----|----|----|----|----|----|----|----|----|----|----|
| 2018 | 1  | 2 | 3  | 4  | 5 | 6  | 7 | 8  | 9 | 10 | 11 | 12 | 13 | 14 | 15 | 16 | 17 | 18 | 19 | 20 | 21 | 22 | 23 | 24 | 25 | 26 | 27 | 28 |
|      | -  | - | -  | -  | - | -  | - | -  | - | -  | -  | -  | -  | -  | -  | -  | -  | -  | -  | -  | -  | -  | -  | -  | -  | -  | -  | -  |

| Mar  | Th | F | Sa | Su | M | Tu | W | Th | F | Sa | Su | M  | Tu | W  | Th | F  | Sa | Su | M  | Tu | W  | Th | F  | Sa |    |    |    |    |    |    |    |
|------|----|---|----|----|---|----|---|----|---|----|----|----|----|----|----|----|----|----|----|----|----|----|----|----|----|----|----|----|----|----|----|
| 2018 | 1  | 2 | 3  | 4  | 5 | 6  | 7 | 8  | 9 | 10 | 11 | 12 | 13 | 14 | 15 | 16 | 17 | 18 | 19 | 20 | 21 | 22 | 23 | 24 | 25 | 26 | 27 | 28 | 29 | 30 | 31 |
|      | -  | - | -  | -  | - | -  | - | -  | - | -  | -  | -  | -  | -  | -  | -  | -  | -  | -  | -  | -  | -  | -  | -  | -  | -  | -  | -  | -  | -  |    |

| Apr  | Su | M | Tu | W | Th | F | Sa | Su | M | Tu | W  | Th | F  | Sa | Su | M  | Tu | W  | Th | F  | Sa | Su | M  |    |    |    |    |    |    |    |
|------|----|---|----|---|----|---|----|----|---|----|----|----|----|----|----|----|----|----|----|----|----|----|----|----|----|----|----|----|----|----|
| 2018 | 1  | 2 | 3  | 4 | 5  | 6 | 7  | 8  | 9 | 10 | 11 | 12 | 13 | 14 | 15 | 16 | 17 | 18 | 19 | 20 | 21 | 22 | 23 | 24 | 25 | 26 | 27 | 28 | 29 | 30 |
|      | -  | - | -  | - | -  | - | -  | -  | - | -  | -  | -  | -  | -  | -  | -  | -  | -  | -  | -  | -  | -  | -  | -  | -  | -  | -  | -  | -  | -  |

| May  | Tu | W | Th | F | Sa | Su | M | Tu | W | Th | F  | Sa | Su | M  | Tu | W  | Th | F  | Sa | Su | M  | Tu | W  | Th |    |    |    |    |    |    |    |
|------|----|---|----|---|----|----|---|----|---|----|----|----|----|----|----|----|----|----|----|----|----|----|----|----|----|----|----|----|----|----|----|
| 2018 | 1  | 2 | 3  | 4 | 5  | 6  | 7 | 8  | 9 | 10 | 11 | 12 | 13 | 14 | 15 | 16 | 17 | 18 | 19 | 20 | 21 | 22 | 23 | 24 | 25 | 26 | 27 | 28 | 29 | 30 | 31 |
|      | -  | - | -  | - | -  | -  | - | -  | - | -  | -  | -  | -  | -  | -  | -  | -  | -  | -  | -  | -  | -  | -  | -  | -  | -  | -  | -  | -  | -  |    |

| June | F | Sa | Su | M | Tu | W | Th | F | Sa | Su | M  | Tu | W  | Th | F  | Sa | Su | M  | Tu | W  | Th | F  | Sa |    |    |    |    |    |    |    |
|------|---|----|----|---|----|---|----|---|----|----|----|----|----|----|----|----|----|----|----|----|----|----|----|----|----|----|----|----|----|----|
| 2018 | 1 | 2  | 3  | 4 | 5  | 6 | 7  | 8 | 9  | 10 | 11 | 12 | 13 | 14 | 15 | 16 | 17 | 18 | 19 | 20 | 21 | 22 | 23 | 24 | 25 | 26 | 27 | 28 | 29 | 30 |
|      | - | -  | -  | - | -  | - | -  | - | -  | -  | -  | -  | -  | -  | -  | -  | -  | -  | -  | -  | -  | -  | -  | -  | -  | -  | -  | -  | -  | -  |

| Jul  | Su | M | Tu | W | Th | F | Sa | Su | M | Tu | W  | Th | F  | Sa | Su | M  | Tu | W  | Th | F  | Sa | Su | M  | Tu |    |    |    |    |    |    |    |
|------|----|---|----|---|----|---|----|----|---|----|----|----|----|----|----|----|----|----|----|----|----|----|----|----|----|----|----|----|----|----|----|
| 2018 | 1  | 2 | 3  | 4 | 5  | 6 | 7  | 8  | 9 | 10 | 11 | 12 | 13 | 14 | 15 | 16 | 17 | 18 | 19 | 20 | 21 | 22 | 23 | 24 | 25 | 26 | 27 | 28 | 29 | 30 | 31 |
|      | -  | - | -  | - | -  | - | -  | -  | - | -  | -  | -  | -  | -  | -  | -  | -  | -  | -  | -  | -  | -  | -  | -  | -  | -  | -  | -  | -  | -  |    |

 Reserved





Luxury vacation rental  
Nakutakoin - New Caledonia  
"Lagoon View"

9

[Book now](#)

Availability calendar - from : july 2018




| Aug  | W | Th | F | Sa | Su | M | Tu | W | Th | F  | Sa | Su | M  | Tu | W  | Th | F  | Sa | Su | M  | Tu | W  | Th | F  |    |    |    |    |    |    |    |
|------|---|----|---|----|----|---|----|---|----|----|----|----|----|----|----|----|----|----|----|----|----|----|----|----|----|----|----|----|----|----|----|
| 2018 | 1 | 2  | 3 | 4  | 5  | 6 | 7  | 8 | 9  | 10 | 11 | 12 | 13 | 14 | 15 | 16 | 17 | 18 | 19 | 20 | 21 | 22 | 23 | 24 | 25 | 26 | 27 | 28 | 29 | 30 | 31 |

| Sep  | Sa | Su | M | Tu | W | Th | F | Sa | Su | M  | Tu | W  | Th | F  | Sa | Su | M  | Tu | W  | Th | F  | Sa | Su |    |    |    |    |    |    |    |
|------|----|----|---|----|---|----|---|----|----|----|----|----|----|----|----|----|----|----|----|----|----|----|----|----|----|----|----|----|----|----|
| 2018 | 1  | 2  | 3 | 4  | 5 | 6  | 7 | 8  | 9  | 10 | 11 | 12 | 13 | 14 | 15 | 16 | 17 | 18 | 19 | 20 | 21 | 22 | 23 | 24 | 25 | 26 | 27 | 28 | 29 | 30 |

Reserved

[Month : Next >>](#)

Rental rates - Luxury Villa - from 2 to 6 Person(s)

| Rates   | Night            | Weekend | week       | 2 weeks | Month      |
|---|------------------|---------|------------|---------|------------|
|  Low season    | PHP13030*<br>> 4 | -       | PHP82918*  | -       | PHP319826* |
|  Mid season   | PHP15991*<br>> 4 | -       | PHP101574* | -       | PHP337594* |
|  High season | PHP17472*<br>> 4 | -       | PHP111939* | -       | PHP417550* |

> Minimum Night

[Book now](#)

Booking conditions

• Reservation

- Payment made upon reservation : 50% of rental sum
- Payment balance : 2 months before the stay
- Deposit required : PHP59227\*

• rentals

- Cleaning charge levy on departure : PHP7107\*
- Anticipated supplement for :  
- supplementary bed(s)

[▶ Book now](#)

[▶ Contact the owner](#)

Accepted methods of payment

- Bank transfer (wire)

Contact directly the property owners

[www.ph.ih.com](http://www.ph.ih.com)

Advert No.

17816

[>> Book now <<](#)

Contact

Spoken languages



\* Converted at the rate indicated : €100 = \$117.29 = £89.59 = PHP5922.7

Advert No. 17816

[www.ph.ih.com](http://www.ph.ih.com)



[>> VACATION HOMES](#)

DIRECT BY OWNERS