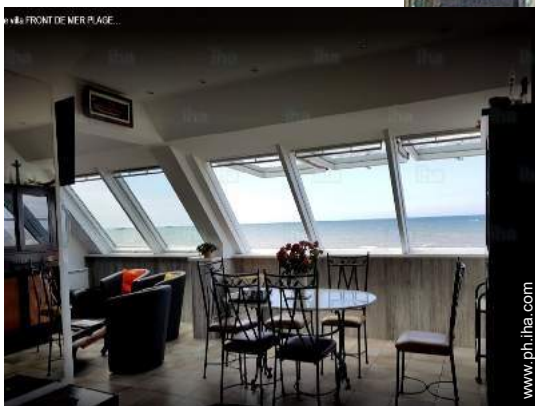


Vacation rental Asnelles "Plage Normande"

Contemporary villa - rural house in true waterfront in the heart of the Normandy landing beaches. Direct access to the sandy beach.



Villa, detached, single storey, separate entrance, in(on) a(an) Property

Setting : waterfront, rural

Capacity : 6 person(s)

Bedroom(s) : 3

Room(s) : 5



Gîtes de France (3 ears)

Asnelles - Calvados (14) - Lower Normandy

France

Reservation : +33 (0) 2 31 80 69 31 (France)

Advert No. 890

www.ph.ih.com



Vacation rental



Villa, detached, single storey, separate entrance, in(on) a(an) Property

- View : panoramic, unobscured, not overlooked, dominant, sea/ocean, fantastic sunset
- Setting : waterfront, rural
- Exposure : South

" GROUND floor: 2 bedrooms with 1 double bed and 2 single beds (sea and garden view) a bathroom with vessel sink, shower and WC, an extra WC independent. Upstairs: 1 bedroom with 1 double bed and 1 shower room. Day rooms upstairs (dining room, lounge, kitchen and loggia) offer through large glazed surfaces, exceptional panoramas and sunsets on the beaches, the sea, the natural area of Meuvaines and the remains of the historic port of ARROMANCHES. A second (exterior) staircase allows direct access to the floor without disturbing the privacy of the rooms on the ground floor. The fully fenced (great barrier on side street and gate on the sea side) with lawn, large planters and tree-lined with flowers, terraces and parking will allow you to enjoy a peaceful waterfront home. "

Assets

- Parking :
Parking uncovered : 5 off road.
- Advantages :
Pétanque field
- baby equipment :
High chair, infant tub, stroller

Benefits :
Direct access to the beach

Surroundings & location



" ASNELLES (GOLD BEACH) is a small coastal village of 576 inhabitants (census 2011) between COURSEULLES (9km) and ARROMANCHES (3 km). Beautiful sandy beach in summer where you can, through the many clubs and associations of ASNELLES, get initiates in pelagic, nautical and maritime activities (sand-yachting, windsurfing, kitesurfing, catamaran, sea kayaking, sea excursions, diving by the very very very many shipwrecks in the area.) You will be at the heart of the historical sites of the landing of June 6, 1944: the Museum and the ARROMANCHES 360° cinema are 3 km away. The impressive American cemetery with its 9387 graves overlooking OMAHA Beach (the bloody Omaha) is 24 km from ASNELLES. The region has many architectural sites to visit (MONT SAINT MICHEL to 120 km). "

Leisure

- Leisure activities less than 12 miles :
Bathing, pedalo, snorkelling, scuba diving, banana boat, water skiing, jet ski, surfing, windsurfing, sailing, kite surfing, canoeing, golf, tennis, squash, riding school, pathway/broadwalk, mountain bike (path), sand yachting, Microlights, boat trips, horse trekking, mini-golf, rollerblade/rollerskate (circuit), skate board (ramps), go-karting, ten-pin bowling, deep-sea fishing, fishing, spear fishing
- Supervised :
Sailing school, riding school
- Attractions and relaxation :
Discotheque, restaurant, movie theater, park and garden, leisure park, zoo/animal park, nature reserve, exhibition center, museum, festivals, antiques & bric-a-brac, cellar and wine tasting, casino, natural spring baths, thalassotherapy center, health spa

Surroundings

- Locality :
Ice skating rink 25km
Sea/ocean
Sandy beach
Nudist beach 500m
Public swimming pool 7,5km
Public tennis court 800m
18 hole golf course 20km
Surfing spots <50m
Watersports centre 200m
Marina 7,5km
Slipway <50m

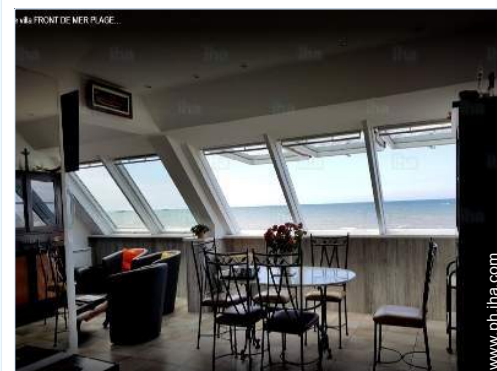
Jetski slipway <50m

• Amenities :

Village center 1km
Bus stop / bus station 1km
Bike/mountain bike hire 1km
Scooter/motorbike hire 1km
Car rental 1km
Boat rental 1km
Scuba diving material hire 1km
Breadstore 1km
Local stores 1km
Supermarket 7,5km
Hairdressing salon 1km
Mail office 1km
ATM 2km
Drugstore 5km
Doctor 1km
Nurse 1km
Hospital 25km



view from the dining-room



dining room



tv den

Interior

- **Receive up to :**

6 person(s)

- **Liveable floor area :**

80m²

- **Interior layout :**

5 Room(s), 3 bedroom(s), 2 shower room, 3 toilets, living room, separate kitchen, dining room, cosy nook, mezzanine, tv den, reading room

- **Sleeps - bed(s) :**

2 full bed(s), 2 twin bed(s), 1 baby cradle

- **Guest facilities :**

Fireplace, T.V., hi-fi system, vcr, DVD player, board games, book collection, t.v points, phone, internet access, high speed internet access, wifi, wardrobe, cupboard, Hanging wardrobe, radio alarmclock, hair dryer, central heating, electric heating, Glazed in area, skylights, Drapes, Blinds, Double glazed, Rolling shutters, fire alarm

- **Appliances :**

Crockery/flatware, kitchen utensils, cafetiere, electric coffee maker, electric kettle, toaster, juicer, food processor, meat broiler, gaz stove, oven, micro-wave oven, extractor hood, refridgerator, deep freeze, dish washer, washing machine, clothes dryer, vacuum cleaner, iron, ironing board

Exterior

- **Ground surface :**

400m²

- **Outside accommodation :**

Terrace 60m², balcony, yard shed

- **Outside setting :**

Private courtyard 300m², enclosed grounds, landscaped yard, lawn

- **Outside amenities :**

Summer living area, BBQ, yard table(s), 12 yard seat(s), trolley on wheels, parasol, yard seated area, 4 sun recliner(s), outside water closet facilities



Services

- **washing :**

Sheets supplement (1 X / per week + PHP3099*), Towels (1 X / per week), Linen (1 X / per week), Comforter(s), Comforter(s), Pillows

- **Single family home :**

Cleaning on departure supplement (+ PHP3099*)

For your guidance

- **For your guidance**

Kids welcome

Pets accepted under certain conditions (ask the owner)

Cell phone network coverage, personal transport advisable

Water : hot/cold

Local voltage supply : 220-240V / 50Hz

Electricity supply : mains



Photo album - 1



dining room



view from the dining-room



tv den



Photo album - 2



Photo album - 3



Location



Location & Access

" From PARIS: Motorway A13 to CAEN, 4 way up to COURSEULLES, 9 km via departmental road to ASNELLES, total 262 km. 80 km from the airport of DEAUVILLE. 13 km from the railway station of BAYEUX. 30 km from the maritime station of OUISTREHAM (ferry from Southampton). "



GPS coordinates in degrees, minutes, seconds: Latitude 49°20'36"N - Longitude 0°34'22"W (Dwelling)

Address

→ 26, rue du Havre Heurtault
14960 Asnelles

• Freeway (exit) A13

→ Caen, Calvados, Lower Normandy,
France
→ Distance : 25km
→ Time : 30'

• Railroad station Bayeux

→ Bayeux, Calvados, Lower Normandy,
France
→ Time : 20'

- Arromanches les Bains : (5km)
- Bayeux : (15km)
- Caen : (32km)

Contact

Spoken
languages



Vacation rental Calvados - Lower Normandy "Plage Normande"

8
[Book now](#)

Availability calendar - from : june 2019

June	Sa	Su	M	Tu	W	Th	F	Sa	Su	M	Tu	W	Th	F	Sa	Su	M	Tu	W	Th	F	Sa	Su							
2019	1	2	3	4	5	6	7	8	9	10	11	12	13	14	15	16	17	18	19	20	21	22	23	24	25	26	27	28	29	30

Jul	M	Tu	W	Th	F	Sa	Su	M	Tu	W	Th	F	Sa	Su	M	Tu	W	Th	F	Sa	Su	M	Tu	W	Th	F	Sa	Su	M	Tu	W
2019	1	2	3	4	5	6	7	8	9	10	11	12	13	14	15	16	17	18	19	20	21	22	23	24	25	26	27	28	29	30	31
	-	-	-	-	-	-	-	-	-	-	-	-	-	-	-	-	-	-	-	-	-	-	-	-	-	-	-	-	-	-	-

Aug	Th	F	Sa	Su	M	Tu	W	Th	F	Sa	Su	M	Tu	W	Th	F	Sa	Su	M	Tu	W	Th	F	Sa	Su	M	Tu	W	Th	F	Sa
2019	1	2	3	4	5	6	7	8	9	10	11	12	13	14	15	16	17	18	19	20	21	22	23	24	25	26	27	28	29	30	31
	-	-	-	-	-	-	-	-	-	-	-	-	-	-	-	-	-	-	-	-	-	-	-	-	-	-	-	-	-	-	-

Sep	Su	M	Tu	W	Th	F	Sa	Su	M	Tu	W	Th	F	Sa	Su	M	Tu	W	Th	F	Sa	Su	M							
2019	1	2	3	4	5	6	7	8	9	10	11	12	13	14	15	16	17	18	19	20	21	22	23	24	25	26	27	28	29	30
	-	-	-	-	-	-	-	-	-	-	-	-	-	-	-	-	-	-	-	-	-	-	-	-	-	-	-	-	-	-

Oct	Tu	W	Th	F	Sa	Su	M	Tu	W	Th	F	Sa	Su	M	Tu	W	Th	F	Sa	Su	M	Tu	W	Th	F	Sa	Su	M	Tu	W	Th
2019	1	2	3	4	5	6	7	8	9	10	11	12	13	14	15	16	17	18	19	20	21	22	23	24	25	26	27	28	29	30	31
	-	-	-	-	-	-	-	-	-	-	-	-	-	-	-	-	-	-	-	-	-	-	-	-	-	-	-	-	-	-	-


Nov	F	Sa	Su	M	Tu	W	Th	F	Sa	Su	M	Tu	W	Th	F	Sa	Su	M	Tu	W	Th	F	Sa							
2019	1	2	3	4	5	6	7	8	9	10	11	12	13	14	15	16	17	18	19	20	21	22	23	24	25	26	27	28	29	30
	-	-	-	-	-	-	-	-	-	-	-	-	-	-	-	-	-	-	-	-	-	-	-	-	-	-	-	-	-	-

Dec	Su	M	Tu	W	Th	F	Sa	Su	M	Tu	W	Th	F	Sa	Su	M	Tu	W	Th	F	Sa	Su	M	Tu							
2019	1	2	3	4	5	6	7	8	9	10	11	12	13	14	15	16	17	18	19	20	21	22	23	24	25	26	27	28	29	30	31
	-	-	-	-	-	-	-	-	-	-	-	-	-	-	-	-	-	-	-	-	-	-	-	-	-	-	-	-	-	-	

Jan	W	Th	F	Sa	Su	M	Tu	W	Th	F	Sa	Su	M	Tu	W	Th	F	Sa	Su	M	Tu	W	Th	F							
2020	1	2	3	4	5	6	7	8	9	10	11	12	13	14	15	16	17	18	19	20	21	22	23	24	25	26	27	28	29	30	31
	-	-	-	-	-	-	-	-	-	-	-	-	-	-	-	-	-	-	-	-	-	-	-	-	-	-	-	-	-	-	

Feb	Sa	Su	M	Tu	W	Th	F	Sa	Su	M	Tu	W	Th	F	Sa	Su	M	Tu	W	Th	F	Sa							
2020	1	2	3	4	5	6	7	8	9	10	11	12	13	14	15	16	17	18	19	20	21	22	23	24	25	26	27	28	29
	-	-	-	-	-	-	-	-	-	-	-	-	-	-	-	-	-	-	-	-	-	-	-	-	-	-	-	-	-

Mar	Su	M	Tu	W	Th	F	Sa	Su	M	Tu	W	Th	F	Sa	Su	M	Tu	W	Th	F	Sa	Su	M	Tu							
2020	1	2	3	4	5	6	7	8	9	10	11	12	13	14	15	16	17	18	19	20	21	22	23	24	25	26	27	28	29	30	31
	-	-	-	-	-	-	-	-	-	-	-	-	-	-	-	-	-	-	-	-	-	-	-	-	-	-	-	-	-	-	

 Reserved

Vacation rental
Asnelles - France
"Plage Normande"

9

[Book now](#)

Availability calendar - from : march 2020

Apr	W	Th	F	Sa	Su	M	Tu	W	Th	F	Sa	Su	M	Tu	W	Th	F	Sa	Su	M	Tu	W	Th	
2020	1	2	3	4	5	6	7	8	9	10	11	12	13	14	15	16	17	18	19	20	21	22	23	24
	-	-	-	-	-	-	-	-	-	-	-	-	-	-	-	-	-	-	-	-	-	-	-	

May	F	Sa	Su	M	Tu	W	Th	F	Sa	Su	M	Tu	W	Th	F	Sa	Su	M	Tu	W	Th	F	Sa	Su	
2020	1	2	3	4	5	6	7	8	9	10	11	12	13	14	15	16	17	18	19	20	21	22	23	24	25
	-	-	-	-	-	-	-	-	-	-	-	-	-	-	-	-	-	-	-	-	-	-	-	-	

Reserved

[Month : Next >>](#)

Rental rates - Villa - 6 Person(s)

Rates	Night	Weekend	week	2 weeks	Month
<input type="checkbox"/> Low season	-	-	PHP37808* (Saturday)	-	-
<input type="checkbox"/> Mid season	-	-	PHP47415* (Saturday)	-	-
<input type="checkbox"/> High season	-	-	PHP66938* (Saturday)	-	-

(Check-in day)

[Book now](#)

Booking conditions

• Reservation

- Payment made upon reservation : 25% of rental sum
- Payment balance : on handing over the keys
- Deposit required : PHP18594*

• rentals

- Service charges included
- Day tax included
- Cleaning charge levy on departure : PHP3099*

[▶ Book now](#)

[▶ Contact the owner](#)

Accepted methods of payment

- International Money Order
- Bank transfer (wire)
- Check
- Cash

Contact directly the property owners

www.ph.ih.com

Advert No.

890

[>> Book now <<](#)

Contact

Spoken languages



* Converted at the rate indicated : €100 = \$116.85 = £89 = PHP6197.99

Advert No. 890

www.ph.ih.com



[>> VACATION HOMES](#)

DIRECT BY OWNERS