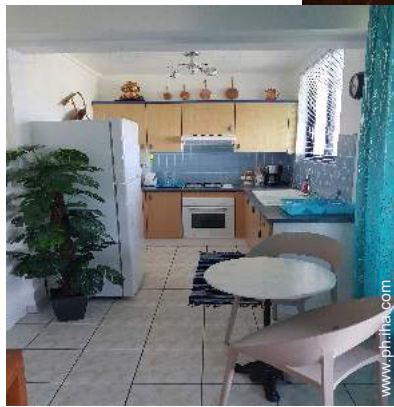


# Vacation rental Faa'a "Te Rai Ninamu"

Studio located on the heights of Faa'a, minutes from the airport and the city of Papeete



Studio Flat 2nd floor, shared entrance,  
in(on) a(an) Estate 1 floor

Setting : pleasant, peaceful

Capacity : from 2 to 4 person(s)  
Room(s) : 1

Faa'a - Tahiti - Windward Islands - Society Islands  
French Polynesia

Advert No. 76454

[www.ph.ih.com](http://www.ph.ih.com)



>> VACATION HOMES

DIRECT BY OWNERS

### Vacation rental



Studio Flat 2nd floor, shared entrance, in (on) a(an) Estate 1 floor

- **Ideal for all age groups, couples**
- **View :** unobscured, dominant, sea/ocean, mountain, rooftop, fantastic sunset
- **Setting :** pleasant, peaceful
- **Exposure :** South

" For a moment of relaxation, a weekend, for a vacation, or a night off between 2 flights on a business trip... it is the places that it you fautStudio ideally located on the heights of Faaa, where you can, from inside of the housing, the terrace or the pool, enjoy the magnificent sunset on the sister island MooreaA 1.5 kms from the airport and 6 km from Papeete. Close to all amenities: supermarkets, bakery, gas Station, medical Centre, pharmacy, various restore points... A car is essential to get there apartment air-conditioned, bright, airy and pleasant, 47 m2, including terrace, in a gated (2 automatic gates) covered private Parking on the same level as the Studioideal to people1 2 bed Queen bed (160 x 200) pets are not allowed. It is strictly forbidden to smoke inside the studio, however, you can do it on the terrace. Building and very quiet. This residence does not lend itself to organize festive events or / and noisy. Check-in is at 3 pm and check out at 11: 00. "

### Assets

- **Swimming pool :**  
Shared swimming pool, rectangular, steps in, outside shower (open from 'january 01' till 'january 01')
- **Parking :**  
Covered parking : 1 closed individual place (s), 1 carport.

### Surroundings & location



" 1.5 kms from the airport and 6 km from Papeete. Close to all amenities: supermarket, bakery, gas Station (open from 4: 00 to midnight), medical Centre, pharmacy, various restore points "

#### Leisure

- **Leisure activities less than 12 miles :**  
Bathing, snorkelling, scuba diving, banana boat, water skiing, jet ski, surfing, tennis, riding school, pony club, pathway/broadwalk, coastal/forest paths, hiking, parascending, parachuting, hang-gliding, paragliding, Microlights, boat trips, horse trekking, skate board (ramps), basketball, volleyball, safari, safari photography, fishing, deep-sea fishing, fishing, spear fishing, pétanque field
- **Supervised :**  
Riding school
- **Attractions and relaxation :**  
Bar/pub, discotheque, restaurant, movie theater, park and garden, exhibition center, art gallery, historical site, museum, theater, festivals, local craftstore, race track, thalassotherapy center, sauna, steam baths, health spa, beauticians, fitness center

#### Surroundings

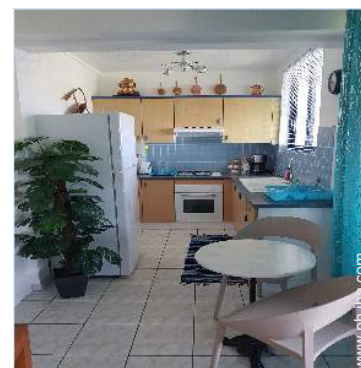
- **Locality :**  
Sea/ocean 15km  
Sandy beach 15km  
Shingle beach 30km  
Rocky beach 40km  
Public tennis court 5km  
18 hole golf course 30km  
Flying clubs 3km  
Windsurfing spots 40km  
Surfing spots 30km  
Watersports centre 10km  
Waterfall 15km  
Cliff 40km  
River 30km  
Marina 10km  
Jetski slipway 15km

- **Amenities :**  
Kindergarten 3km  
Downtown 7,5km  
Bus stop / bus station 2km  
Scooter/motorbike hire 2,5km  
Car rental 2,5km  
Breadstore 2,5km  
Local stores 2,5km  
Supermarket 5km  
High class retailers 7,5km  
Hairdressing salon 2,5km  
Mail office 4km  
Bank 3km  
ATM 2,5km

Drugstore 2,5km  
Doctor 2,5km  
Nurse 5km  
Hospital 10km  
Dispensary 5km



view from the terrace



kitchen



toilets

### Interior

- **Receive up to :**  
from 2 to 4 person(s) (2 adults, 2 kids)
- **Liveable floor area :**  
45m<sup>2</sup>
- **Interior layout :**  
1 Room(s), 1 shower room, 1 toilets, living room 35m<sup>2</sup>, Kitchen Area, dining area, tv den, walk-in closet, veranda
- **Sleeps - bed(s) :**  
1 king-size bed(s), 1 possible extra bed(s)
- **Guest facilities :**  
T.V., internet access, wifi, wardrobe, cupboard, Hanging wardrobe, safe deposit box, hair dryer, fully air-conditioned, ceiling paddle fan, Glazed in area, Drapes, Blinds, Double glazed, remote controlled gates, digipad entry gates
- **Appliances :**  
Crockery/flatware, kitchen utensils, electric coffee maker, electric kettle, juicer, gas stove, oven, micro-wave oven, extractor hood, refridgerator, deep freeze, washing machine, vacuum cleaner, iron, ironing board

### Exterior

- **Outside accommodation :**  
Terrace 11m<sup>2</sup>, covered terrace 11m<sup>2</sup>
- **Outside amenities :**  
Yard seated area



view from the living room

### Services

- **washing :**  
Sheets, Towels, Linen, Comforter(s), Pillows
- **Single family home :**  
Cleaning on departure supplement (+ PHP3719\*), Parking, Airport transfers supplement (+PHP1859\*)

### For your guidance

- **For your guidance**  
Kids welcome  
No pet allowed  
Non smoking rental, cell phone network coverage, personal transport advisable, alcohol not permitted  
Water : hot/cold  
Local voltage supply : 110-120V / 60Hz  
Electricity supply : mains



shower room



Photo album - 1



kitchen



view from the terrace



toilets

Photo album - 2



shower room



view from the living room



sleeping area



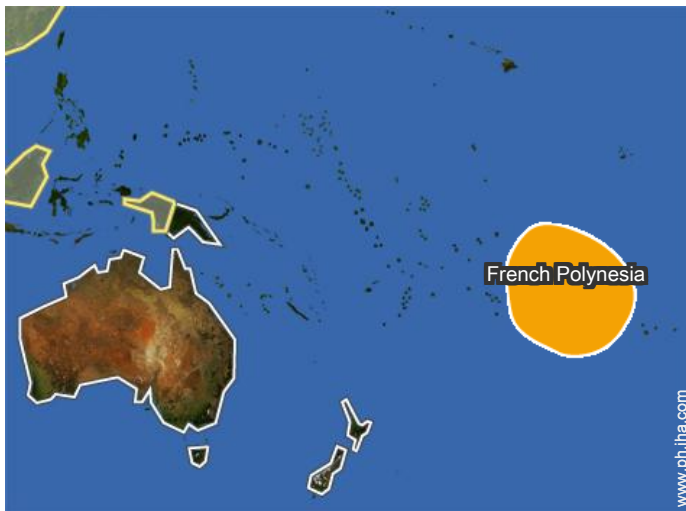
shared swimming pool



view from the swimming pool



Location



Location & Access

" Located in Faa', and access by road to Pi'afau at the bottom of the servitude, 2nd building "



GPS coordinates in degrees, minutes, seconds: Latitude 17°34'5"S - Longitude 149°36'34"W (Dwelling)

Address

→ BP 61106  
Te Rai Ninamu  
98704 Faa'a

→ Faa'a, Tahiti, Windward Islands - Society Islands, French Polynesia  
→ Distance : 2,5km  
→ Time : 5'

• Airport Tahiti Faa'a

→ Papeete, Tahiti, Windward Islands - Society Islands, French Polynesia  
→ Distance : 2,5km  
→ Time : 5'

• Sea port Papeete

→ Papeete, Tahiti, Windward Islands - Society Islands, French Polynesia  
→ Distance : 11km  
→ Time : 20'

• Bus station Faa'a

- Faa'a : (2,5km)
- Papeete : (7,5km)
- Punaauia : (10km)

Contact

Spoken languages



# Vacation rental Faa'a - French Polynesia "Te Rai Ninamu"

7  
[Book now](#)

Availability calendar - from : june 2019

June	Sa	Su	M	Tu	W	Th	F	Sa	Su	M	Tu	W	Th	F	Sa	Su	M	Tu	W	Th	F	Sa	Su	M	Tu	W	Th	F	Sa	Su
2019	1	2	3	4	5	6	7	8	9	10	11	12	13	14	15	16	17	18	19	20	21	22	23	24	25	26	27	28	29	30
																	-	-	-	-	-	-	-	-	-	-	-	-	-	-

Jul	M	Tu	W	Th	F	Sa	Su	M	Tu	W	Th	F	Sa	Su	M	Tu	W	Th	F	Sa	Su	M	Tu	W	Th	F	Sa	Su	M	Tu	W
2019	1	2	3	4	5	6	7	8	9	10	11	12	13	14	15	16	17	18	19	20	21	22	23	24	25	26	27	28	29	30	31
	-	-	-	-	-	-	-	-	-	-	-	-	-	-	-	-	-	-	-	-	-	-	-	-	-	-	-	-	-	-	-

Aug	Th	F	Sa	Su	M	Tu	W	Th	F	Sa	Su	M	Tu	W	Th	F	Sa	Su	M	Tu	W	Th	F	Sa	Su	M	Tu	W	Th	F	Sa
2019	1	2	3	4	5	6	7	8	9	10	11	12	13	14	15	16	17	18	19	20	21	22	23	24	25	26	27	28	29	30	31
	-	-	-	-	-	-	-	-	-	-	-	-	-	-	-	-	-	-	-	-	-	-	-	-	-	-	-	-	-	-	-

Sep	Su	M	Tu	W	Th	F	Sa	Su	M	Tu	W	Th	F	Sa	Su	M	Tu	W	Th	F	Sa	Su	M	Tu	W	Th	F	Sa	Su	M
2019	1	2	3	4	5	6	7	8	9	10	11	12	13	14	15	16	17	18	19	20	21	22	23	24	25	26	27	28	29	30
	-	-	-	-	-	-	-	-	-	-	-	-	-	-	-	-	-	-	-	-	-	-	-	-	-	-	-	-	-	-

Oct	Tu	W	Th	F	Sa	Su	M	Tu	W	Th	F	Sa	Su	M	Tu	W	Th	F	Sa	Su	M	Tu	W	Th	F	Sa	Su	M	Tu	W	Th
2019	1	2	3	4	5	6	7	8	9	10	11	12	13	14	15	16	17	18	19	20	21	22	23	24	25	26	27	28	29	30	31
	-	-	-	-	-	-	-	-	-	-	-	-	-	-	-	-	-	-	-	-	-	-	-	-	-	-	-	-	-	-	-

Nov	F	Sa	Su	M	Tu	W	Th	F	Sa	Su	M	Tu	W	Th	F	Sa	Su	M	Tu	W	Th	F	Sa	Su	M	Tu	W	Th	F	Sa
2019	1	2	3	4	5	6	7	8	9	10	11	12	13	14	15	16	17	18	19	20	21	22	23	24	25	26	27	28	29	30
	-	-	-	-	-	-	-	-	-	-	-	-	-	-	-	-	-	-	-	-	-	-	-	-	-	-	-	-	-	-

Dec	Su	M	Tu	W	Th	F	Sa	Su	M	Tu	W	Th	F	Sa	Su	M	Tu	W	Th	F	Sa	Su	M	Tu	W	Th	F	Sa	Su	M	Tu
2019	1	2	3	4	5	6	7	8	9	10	11	12	13	14	15	16	17	18	19	20	21	22	23	24	25	26	27	28	29	30	31
	-	-	-	-	-	-	-	-	-	-	-	-	-	-	-	-	-	-	-	-	-	-	-	-	-	-	-	-	-	-	-

Jan	W	Th	F	Sa	Su	M	Tu	W	Th	F	Sa	Su	M	Tu	W	Th	F	Sa	Su	M	Tu	W	Th	F	Sa	Su	M	Tu	W	Th	F
2020	1	2	3	4	5	6	7	8	9	10	11	12	13	14	15	16	17	18	19	20	21	22	23	24	25	26	27	28	29	30	31
	-	-	-	-	-	-	-	-	-	-	-	-	-	-	-	-	-	-	-	-	-	-	-	-	-	-	-	-	-	-	-

Feb	Sa	Su	M	Tu	W	Th	F	Sa	Su	M	Tu	W	Th	F	Sa	Su	M	Tu	W	Th	F	Sa	Su	M	Tu	W	Th	F	Sa
2020	1	2	3	4	5	6	7	8	9	10	11	12	13	14	15	16	17	18	19	20	21	22	23	24	25	26	27	28	29
	-	-	-	-	-	-	-	-	-	-	-	-	-	-	-	-	-	-	-	-	-	-	-	-	-	-	-	-	-

Mar	Su	M	Tu	W	Th	F	Sa	Su	M	Tu	W	Th	F	Sa	Su	M	Tu	W	Th	F	Sa	Su	M	Tu	W	Th	F	Sa	Su	M	Tu
2020	1	2	3	4	5	6	7	8	9	10	11	12	13	14	15	16	17	18	19	20	21	22	23	24	25	26	27	28	29	30	31
	-	-	-	-	-	-	-	-	-	-	-	-	-	-	-	-	-	-	-	-	-	-	-	-	-	-	-	-	-	-	-

 Reserved

Vacation rental  
Tahiti - Windward Islands - Society Islands  
**"Te Rai Ninamu"**

8  
[Book now](#)

Availability calendar - from : march 2020




Apr	W	Th	F	Sa	Su	M	Tu	W	Th	F	Sa	Su	M	Tu	W	Th	F	Sa	Su	M	Tu	W	Th	
2020	1	2	3	4	5	6	7	8	9	10	11	12	13	14	15	16	17	18	19	20	21	22	23	24
	-	-	-	-	-	-	-	-	-	-	-	-	-	-	-	-	-	-	-	-	-	-	-	-

May	F	Sa	Su	M	Tu	W	Th	F	Sa	Su	M	Tu	W	Th	F	Sa	Su	M	Tu	W	Th	F	Sa	Su	
2020	1	2	3	4	5	6	7	8	9	10	11	12	13	14	15	16	17	18	19	20	21	22	23	24	25
	-	-	-	-	-	-	-	-	-	-	-	-	-	-	-	-	-	-	-	-	-	-	-	-	-

 Reserved

[Month : Next >>](#)

Rental rates - Studio Flat - from 2 to 4 Person(s)

Rates	Night	Weekend	week	2 weeks	Month
 Low season	PHP4648* ↓ > 2	-	PHP30990*	PHP51133*	PHP68178*
 Mid season	PHP5268* > 2	-	PHP34089*	PHP55782*	PHP80574*
 High season	PHP5268* ↓ > 2	-	PHP34089*	PHP55782*	PHP80574*

↓ Reducing rates > Minimum Night

[Book now](#)

Booking conditions

• Reservation

- Payment made upon reservation : 25% of rental sum
- Payment balance : on handing over the keys
- Deposit required : PHP6198\*

• rentals

- Service charges to be added
- Day tax included
- Cleaning charge levy on departure : PHP1859\*

[▶ Book now](#)

[▶ Contact the owner](#)

Accepted methods of payment

- Bank transfer (wire) • PayPal • Cash

Contact directly the property owners

[www.ph.ih.com](http://www.ph.ih.com)

Advert No.

76454

[>> Book now <<](#)

Contact

Spoken languages



\* Converted at the rate indicated : €100 = \$116.85 = £89 = PHP6197.99

Advert No. 76454

[www.ph.ih.com](http://www.ph.ih.com)

