

Vacation rental Grindelwald "ALPENRUHE Holzchalet"

We, Margreth and Hans-Ulrich, are your hosts. We live in our chalet and enjoy the encounter with each holiday guests. Hospitality is our greatest asset.



Apartment-Flat first floor, separate entrance, in(on) a(an) Charming Chalet 3 floors

Setting : mountainy, quiet

Capacity : from 2 to 4 person(s)

Bedroom(s) : 1

Room(s) : 2



Swiss Tourism Federation (3 stars)

Grindelwald - Berne Canton

Switzerland

Reservation : +41 (0) 33 853 34 16 (Switzerland)

Advert No. 55386

www.ph.iha.com



Vacation rental



Apartment-Flat first floor, separate entrance, in(on) a(an) Charming Chalet 3 floors

- **Ideal for all age groups, senior(s)**
- **View :** panoramic, not overlooked, mountain, country side, fantastic sunset, nightlights
- **Setting :** mountainy, quiet
- **Exposure :** South

"Our Chalet is a traditional Grindelwaldhaus. It is located on the sunny side of the Valley and offers a magnificent view of the mountain world - especially on the world-famous Eiger North face. Very quiet location surrounded by meadows, year round access with garage, bus stop 5 minutes walking distance. We rent a spacious and cosy 2-room apartment (70m²) for 2-4 persons on the ground floor. Entrance with wardrobe and closet, living room with dining area, seating, fireplace, TV and 2 extra beds. Large bedroom with 2 single beds, wardrobe and chest of drawers, bed for children available. Separate kitchen with pass-through, GS, microwave, large refrigerator, cooker with glass-ceramic and oven, coffee machine, toaster. Bathroom with WC and shower. Telephone, digital TV and radio, DVD-player, WIFI, board games, books. Garden with garden furniture, deckchairs, barbecue. Pets on request, non-smoking apartment, free admission to the Sports Centre (indoor swimming pool/ice rink)"

Assets

- **Parking :**
Covered parking : 1 closed individual place (s). Parking uncovered
- **Advantages :**
Piano
- **baby equipment :**
High chair, infant tub, baby potty

Surroundings & location



" Whether summer or winter, the Jungfrau region is good for an unforgettable holiday. Embedded in one of the most spectacular mountain scenery in Europe Grindelwald offers everything you need for a relaxing and inspiring holiday. An intact village life with many living traditions, versatile shopping and gastro scenes. Countless excursions and sport activities are summer and winter. Activities less than 20 km away: hiking, climbing, mountain biking, canyoning, rafting, swimming (indoor and outdoor pool in the summer), paragliding, paragliding, minigolf, tennis, carriage rides, toboggan run, indoor rope park, period flyer, Alpine Ski, ski hike, Helsinki, snowboard, tobogganing (longest slope in Europe), Halfpipe/ramp, skateboard, skating, bowling. Enjoy the spectacular views from the Jungfraujoeh - top of Europe at 3454 m above sea level, or cool off on a hot summer day in the Glacier Gorge or observe the biodiversity in the Alpine Bird Park. Variety is guaranteed. "

Leisure

- **Leisure activities less than 12 miles :**

Alpine skiing, cross-country skiing, off-piste skiing, ski-trekking, snowboarding, luge (run), ice-skating, bathing, canyoning, rafting, golf, tennis, riding school, pathway/broadwalk, coastal/forest paths, hiking, rappel, rock climbing, mountain bike (path), parascending, hang-gliding, paragliding, horse-drawn carriage, mini-golf, skate board (ramps), go-karting, ten-pin bowling, fishing

- **Supervised :**

Ski school, kids ski area

- **Attractions and relaxation :**

Bar/pub, discotheque, restaurant, art gallery, museum, sauna, fitness center

Surroundings

- **Locality :**

Ski slopes 1km
Ski lifts 1km
Ice skating rink 1km
Heated swimming pool
Public swimming pool 1km
Public tennis court
9 hole golf course 2km
Waterfall
Cliff
River 1km
Forest 1km
Mountain range
Via ferrata-alpinism

- **Amenities :**

Village center 1km
Bus stop / bus station <50m
Ski bus pick up point <50m
Bike/mountain bike hire 1km
Ski hire store 1km
Household linens for hire/laundry services 3km
Breadstore 1km
Caterer 1km
Local stores 500m
Supermarket 1km
High class retailers 1km
Hairdressing salon 1km
Mail office 1km
Bank 1km
ATM 1km
Drugstore 1km
Doctor 500m
Hospital 20km
Dispensary 800m



Outside setting



Winter



the apartment

Exterior

- **Ground surface :**
2000m²
- **Outside accommodation :**
Terrace 28m²
- **Outside setting :**
Enclosed grounds, yard
- **Outside amenities :**
BBQ, yard table(s), 4 yard seat(s), parasol, 2 sun recliner(s)



Summer

Interior

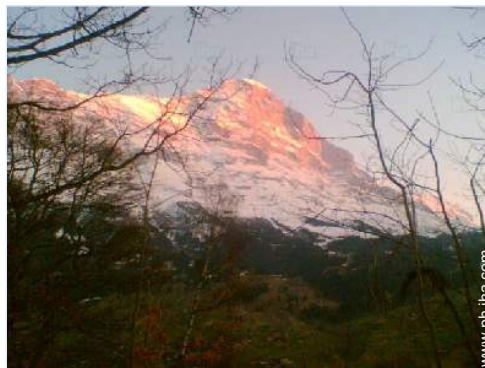
- **Receive up to :**
from 2 to 4 person(s) (2 adults, 2 kids)
- **Liveable floor area :**
70m²
- **Interior layout :**
2 Room(s), 1 bedroom(s), sleeping den, 1 bathroom, 1 toilets, living room 35m², separate kitchen, dining area, cosy nook, tv den, laundry room, loggia
- **Sleeps - bed(s) :**
2 twin bed(s), 2 twin storage bed 1 pers, 1 baby cradle
- **Guest facilities :**
Fireplace, T.V., vcr, DVD player, video games, board games, book collection, t.v points, phone, cable/satelite, internet access, wifi, wardrobe, cupboard, Hanging wardrobe, hair dryer, central heating, Drapes, Double glazed, Rolling shutters
- **Appliances :**
Crockery/flatware, kitchen utensils, cafetiere, electric coffee maker, electric espresso coffee maker, electric kettle, toaster, juicer, food processor, electric raclette set, fondue set, electric stove, electric hobs, oven, microwave oven, extractor hood, refridgerator, deep freeze, ice maker, dish washer, washing machine, vacuum cleaner, iron, ironing board

Services

- **washing :**
Sheets (1 X / per week), Towels (2 X / per week), Linen (1 X / per week), Comforter(s) (1 X / per week), Comforter(s) (1 X / per week), Pillows (1 X / per week)
- **Single family home :**
Cleaning on departure, Snow clearance, Parking

For your guidance

- **For your guidance**
Kids welcome
Pets friendly
Non smoking rental, cell phone network coverage
Water : hot/cold
Local voltage supply : 110-120V / 60Hz
Electricity supply : mains
- **Handicapped people welcome**
Fitted out for the disabled : hard of hearing



Mountain

Photo album - 1



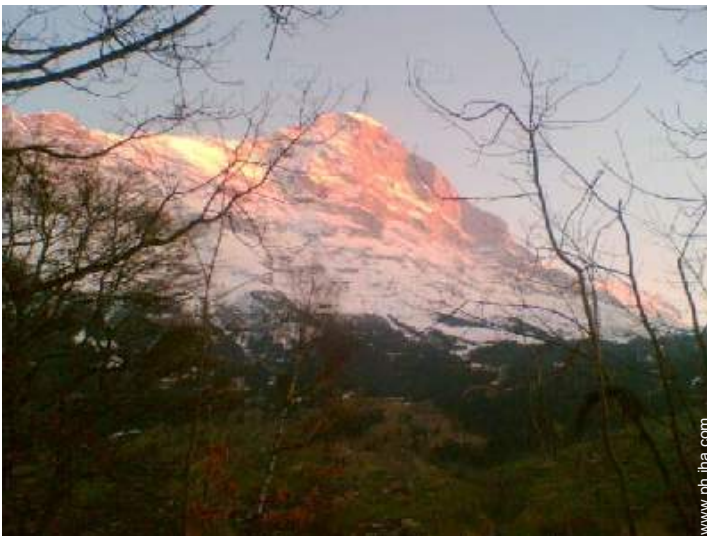
Winter



Outside setting



the apartment



Mountain



Summer

Photo album - 2



General



Culture



the apartment



the apartment



the apartment



the apartment



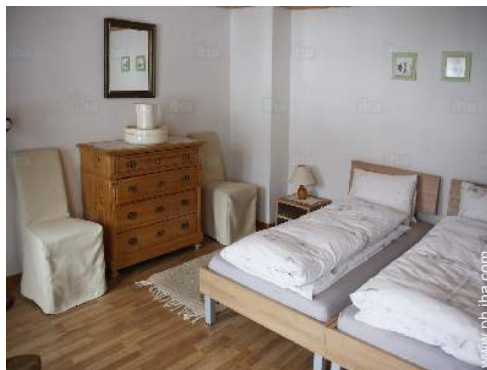
General



Culture

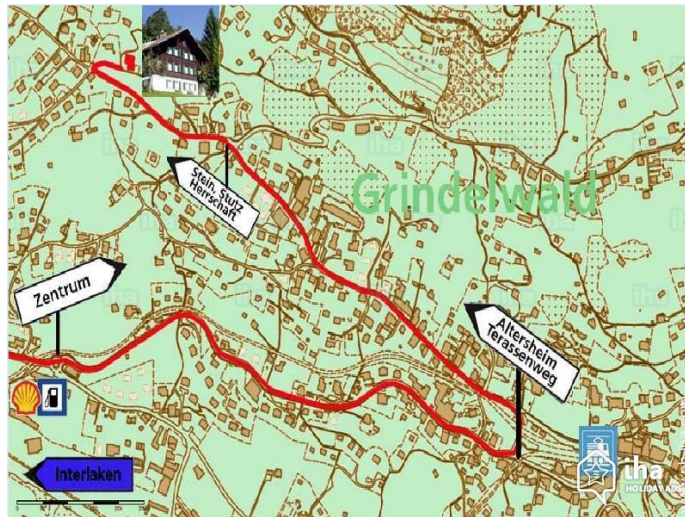


the apartment



the apartment

Route map



Location & Access

" By car in about 30 minutes from Interlaken-Wilderswil-Grindelwald. At the roundabout (gas station) 2nd exit, 100 m after 3. left turn petrol (oil TRANS) under railway bridge by, and continue along the road straight ahead, hotel Eigerblick is still 200 m intersection, turn sharp right into mats recourse - access chalet. By train from Interlaken Ost to Grindelwald station. We will pick you up. "



GPS coordinates in degrees, minutes, seconds: Latitude 46° 37'47"N - Longitude 8° 1'17"E (Dwelling)

Address

→ Mittelmattenweg 3
CH-3818 Grindelwald

• Freeway (exit) A6

→ Wilderswil, Berne Canton, Switzerland
→ Distance : 20km
→ Time : 30'

• Railroad station Grindelwald

→ Grindelwald, Berne Canton, Switzerland
→ Distance : 1km
→ Time : 15'

• Bus station Grindelwald - Bärplatz

→ Grindelwald, Berne Canton, Switzerland
→ Distance : 1km
→ Time : 5'

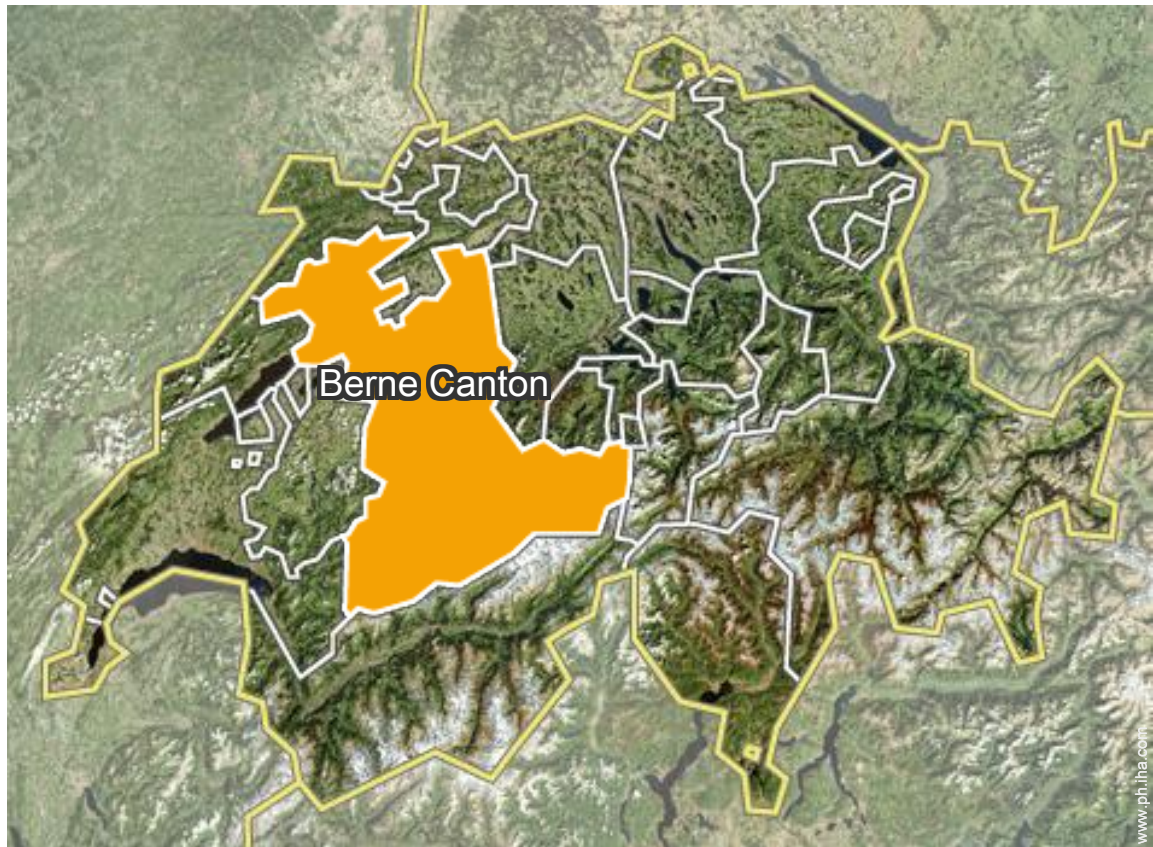
- Interlaken : (20km)
- Thun : (49km)
- Berne : (75km)

Contact

Spoken languages



Location



Vacation rental
 Berne Canton - Switzerland
"ALPENRUHE Holzchalet"

Availability calendar - from : november 2019

Nov	F	Sa	Su	M	Tu	W	Th	F	Sa	Su	M	Tu	W	Th	F	Sa	Su	M	Tu	W	Th	F	Sa	Su							
2019	1	2	3	4	5	6	7	8	9	10	11	12	13	14	15	16	17	18	19	20	21	22	23	24	25	26	27	28	29	30	
										-	-	-	-	-	-	-	-	-	-	-	-	-	-	-	-	-	-	-	-		
Dec	Su	M	Tu	W	Th	F	Sa	Su	M	Tu	W	Th	F	Sa	Su	M	Tu	W	Th	F	Sa	Su	M	Tu	W	Th	F	Sa	Su	M	Tu
2019	1	2	3	4	5	6	7	8	9	10	11	12	13	14	15	16	17	18	19	20	21	22	23	24	25	26	27	28	29	30	31
	-	-	-	-	-	-	-	-	-	-	-	-	-	-	-	-	-	-	-	-	-	-	-	-	-	-	-	-	-	-	
Jan	W	Th	F	Sa	Su	M	Tu	W	Th	F	Sa	Su	M	Tu	W	Th	F	Sa	Su	M	Tu	W	Th	F	Sa	Su	M	Tu	W	Th	F
2020	1	2	3	4	5	6	7	8	9	10	11	12	13	14	15	16	17	18	19	20	21	22	23	24	25	26	27	28	29	30	31
	-	-	-	-	-	-	-	-	-	-	-	-	-	-	-	-	-	-	-	-	-	-	-	-	-	-	-	-	-	-	
Feb	Sa	Su	M	Tu	W	Th	F	Sa	Su	M	Tu	W	Th	F	Sa	Su	M	Tu	W	Th	F	Sa	Su	M	Tu	W	Th	F	Sa		
2020	1	2	3	4	5	6	7	8	9	10	11	12	13	14	15	16	17	18	19	20	21	22	23	24	25	26	27	28	29		
	-	-	-	-	-	-	-	-	-	-	-	-	-	-	-	-	-	-	-	-	-	-	-	-	-	-	-	-	-		
Mar	Su	M	Tu	W	Th	F	Sa	Su	M	Tu	W	Th	F	Sa	Su	M	Tu	W	Th	F	Sa	Su	M	Tu	W	Th	F	Sa	Su	M	Tu
2020	1	2	3	4	5	6	7	8	9	10	11	12	13	14	15	16	17	18	19	20	21	22	23	24	25	26	27	28	29	30	31
	-	-	-	-	-	-	-	-	-	-	-	-	-	-	-	-	-	-	-	-	-	-	-	-	-	-	-	-	-	-	
Apr	W	Th	F	Sa	Su	M	Tu	W	Th	F	Sa	Su	M	Tu	W	Th	F	Sa	Su	M	Tu	W	Th	F	Sa	Su	M	Tu	W	Th	
2020	1	2	3	4	5	6	7	8	9	10	11	12	13	14	15	16	17	18	19	20	21	22	23	24	25	26	27	28	29	30	
	-	-	-	-	-	-	-	-	-	-	-	-	-	-	-	-	-	-	-	-	-	-	-	-	-	-	-	-	-	-	
May	F	Sa	Su	M	Tu	W	Th	F	Sa	Su	M	Tu	W	Th	F	Sa	Su	M	Tu	W	Th	F	Sa	Su	M	Tu	W	Th	F	Sa	Su
2020	1	2	3	4	5	6	7	8	9	10	11	12	13	14	15	16	17	18	19	20	21	22	23	24	25	26	27	28	29	30	31
	-	-	-	-	-	-	-	-	-	-	-	-	-	-	-	-	-	-	-	-	-	-	-	-	-	-	-	-	-	-	
June	M	Tu	W	Th	F	Sa	Su	M	Tu	W	Th	F	Sa	Su	M	Tu	W	Th	F	Sa	Su	M	Tu	W	Th	F	Sa	Su	M	Tu	
2020	1	2	3	4	5	6	7	8	9	10	11	12	13	14	15	16	17	18	19	20	21	22	23	24	25	26	27	28	29	30	
	-	-	-	-	-	-	-	-	-	-	-	-	-	-	-	-	-	-	-	-	-	-	-	-	-	-	-	-	-	-	
Jul	W	Th	F	Sa	Su	M	Tu	W	Th	F	Sa	Su	M	Tu	W	Th	F	Sa	Su	M	Tu	W	Th	F	Sa	Su	M	Tu	W	Th	F
2020	1	2	3	4	5	6	7	8	9	10	11	12	13	14	15	16	17	18	19	20	21	22	23	24	25	26	27	28	29	30	31
	-	-	-	-	-	-	-	-	-	-	-	-	-	-	-	-	-	-	-	-	-	-	-	-	-	-	-	-	-	-	
Aug	Sa	Su	M	Tu	W	Th	F	Sa	Su	M	Tu	W	Th	F	Sa	Su	M	Tu	W	Th	F	Sa	Su	M	Tu	W	Th	F	Sa	Su	M
2020	1	2	3	4	5	6	7	8	9	10	11	12	13	14	15	16	17	18	19	20	21	22	23	24	25	26	27	28	29	30	31
	-	-	-	-	-	-	-	-	-	-	-	-	-	-	-	-	-	-	-	-	-	-	-	-	-	-	-	-	-	-	

 Reserved

Vacation rental
Grindelwald - Switzerland
"ALPENRUHE Holzchalet"

9

[Book now](#)

Availability calendar - from : august 2020




Sep	Tu	W	Th	F	Sa	Su	M	Tu	W	Th	F	Sa	Su	M	Tu	W	Th	F	Sa	Su	M	Tu	W							
2020	1	2	3	4	5	6	7	8	9	10	11	12	13	14	15	16	17	18	19	20	21	22	23	24	25	26	27	28	29	30
-	-	-	-	-	-	-	-	-	-	-	-	-	-	-	-	-	-	-	-	-	-	-	-	-	-	-	-	-	-	

Oct	Th	F	Sa	Su	M	Tu	W	Th	F	Sa	Su	M	Tu	W	Th	F	Sa	Su	M	Tu	W	Th	F	Sa							
2020	1	2	3	4	5	6	7	8	9	10	11	12	13	14	15	16	17	18	19	20	21	22	23	24	25	26	27	28	29	30	31
-	-	-	-	-	-	-	-	-	-	-	-	-	-	-	-	-	-	-	-	-	-	-	-	-	-	-	-	-	-	-	

Reserved

[Month : Next >>](#)

Rental rates - Apartment-Flat - from 2 to 4 Person(s)

Rates	Night	Weekend	week	2 weeks	Month
 Low season	PHP6957* (Saturday) > 6	-	PHP48700* (Saturday)	PHP97400* (Saturday)	-
 High season	PHP7225* (Saturday) > 6	-	PHP50573* (Saturday)	PHP101146* (Saturday)	-
 Festive specials	PHP7492* (Saturday) > 6	-	PHP52446* (Saturday)	PHP104892* (Saturday)	-

(Check-in day) > Minimum Night

[Book now](#)

Booking conditions

• Reservation

→ Payment made upon reservation :
30% of rental sum
→ Payment balance :
on handing over the keys

• rentals

→ Service charges included
→ Day tax in addition
→ Cleaning charge on departure included

Accepted methods of payment

• International Money Order • Bank transfer (wire) • PayPal • Cash

[▶ Book now](#)

[▶ Contact the owner](#)

Contact directly the property owners

www.ph.ih.com

Advert No.

55386

[>> Book now <<](#)

Contact

Spoken languages



* Converted at the rate indicated : €100 = \$110 = £91 = PHP6197.99

Advert No. 55386

www.ph.ih.com



[>> VACATION HOMES](#)

DIRECT BY OWNERS