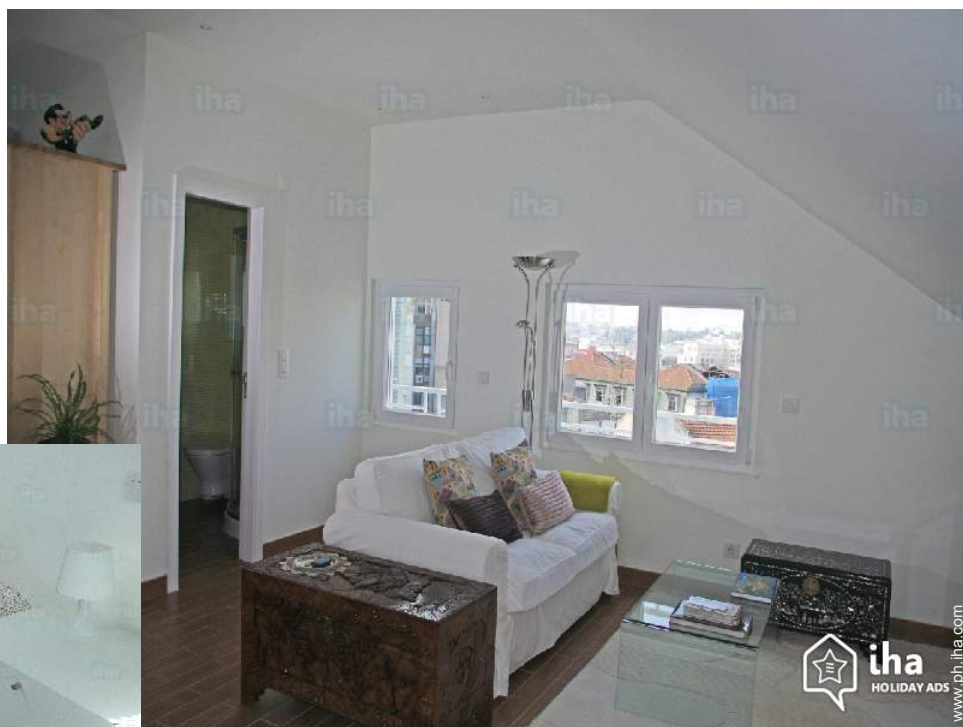


Vacation rental Lisbon Apartment-Flat

Quiet and bright apartment in the centre of Lisbon, on the 6th floor of a building with elevator, near the inescapable Avenida da Liberdade, the large boulevard leading to the Baixa and the old quarters.



Apartment-Flat top floor in(on) a(an)
Apartment house/building 6 floors

Setting : urban, tranquil

Capacity : from 1 to 2 person(s)

Bedroom(s) : 1

Room(s) : 2

Lisbon - Lisbon District - Lisbon and Tagus Valley

Portugal

Advert No. 67417

www.ph.ih.com



>> VACATION HOMES

DIRECT BY OWNERS



Vacation rental



Apartment-Flat top floor in(on) a(an)
Apartment house/building 6 floors

- **Ideal for couples**
- **View** : unobscured
- **Setting** : urban, tranquil
- **Exposure** : South

" Located in the centre of Lisbon, near the marks of Pombal square and Eduardo VII Park, our apartment is a two rooms, a bedroom with double bed and a living room with dining area. There is also a bathroom with shower and a fully equipped kitchenette. It is a calm and luminous space with open views, on the South side. All the windows have double glazing, electric external shutters and mosquito nets, which makes it very easy to live. Access from the airport is easy and quick, 25 minutes by bus, subway or aerobus (shuttle), with stop/station 100 meters from the apartment. The area is served by two metro lines and several bus routes, including to directly reach Belém, the Praça do Comércio and the market the chips, as well as railway connections to Sintra and Cascais. Nearby you will find the Museum of the Fundação Calouste Gulbenkian and the Parque Eduardo VII pleasant with its alleys, its gardens, terraces and its belvedere. Access to the Baixa can be done on foot down the inevitable Avenida da Liberdade, the large boulevard that leads to the lower town. The final cleaning is included in the rent. There is no deposit to pay. Prices shown are inclusive of all taxes, there will be nothing to pay. "

Surroundings & location



City

" Nearby you will find all services and shops, the area is served by two metro lines and several bus routes, including to directly reach Belém, Praça do Comércio and the market chips, as well as the railway to connections Sintra and Cascais. "

Surroundings

• **Amenities** :

Downtown 500m
Bus stop / bus station 50m
Subway station 100m
Supermarket 100m
Bank <50m
ATM <50m
Drugstore 100m



kitchenette



bedroom



kitchenette



bedroom

Interior

- **Receive up to :**
from 1 to 2 person(s) (2 adults)
- **Liveable floor area :**
40m²
- **Interior layout :**
2 Room(s), 1 bedroom(s), 1 shower room, living room 20m², kitchenette, dining area
- **Sleeps - bed(s) :**
1 full bed(s)
- **Guest facilities :**
Elevator, T.V., book collection, internet access, wifi, cupboard, hair dryer, fly screens, electric heating, skylights, Double glazed, Rolling shutters, electric shutters, entry phone system
- **Appliances :**
Crockery/flatware, kitchen utensils, electric espresso coffee maker, electric kettle, toaster, electric hobs, micro-wave oven, extractor hood, refridgerator, vacuum cleaner, iron, ironing board

Services

- **washing :**
Sheets, Towels, Linen, Comforter(s), Comforter(s), Pillows
- **Single family home :**
Cleaning on departure

For your guidance

- **For your guidance**
Non smoking rental, cell phone network coverage
Electricity supply : mains

Floor plan

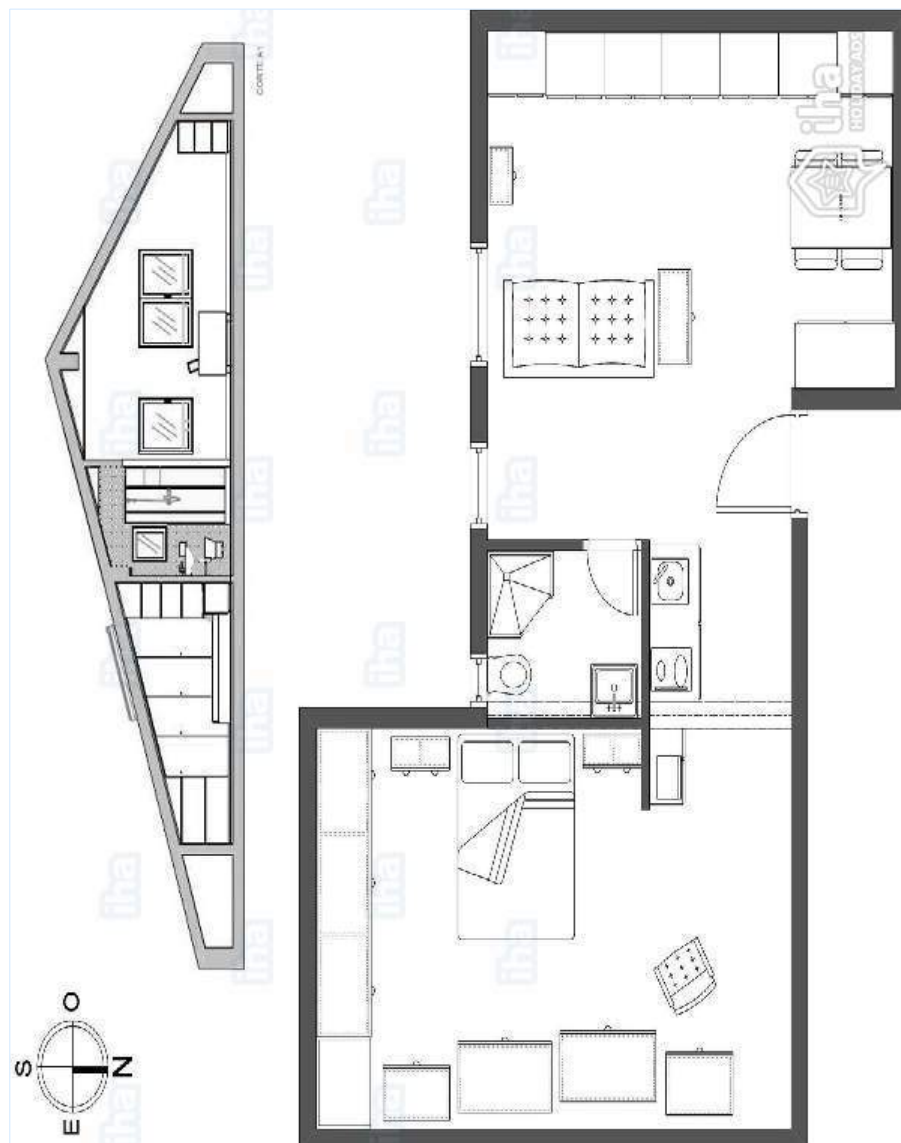


Photo album - 1



bedroom



kitchenette



kitchenette

Photo album - 2



bedroom



living room



dining area

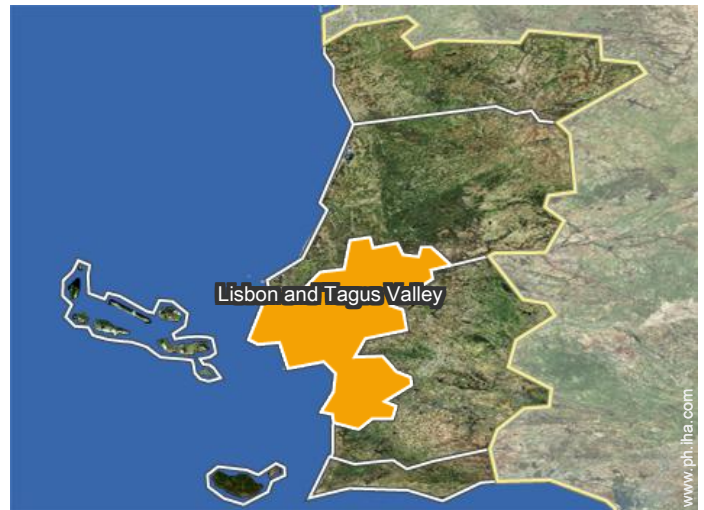
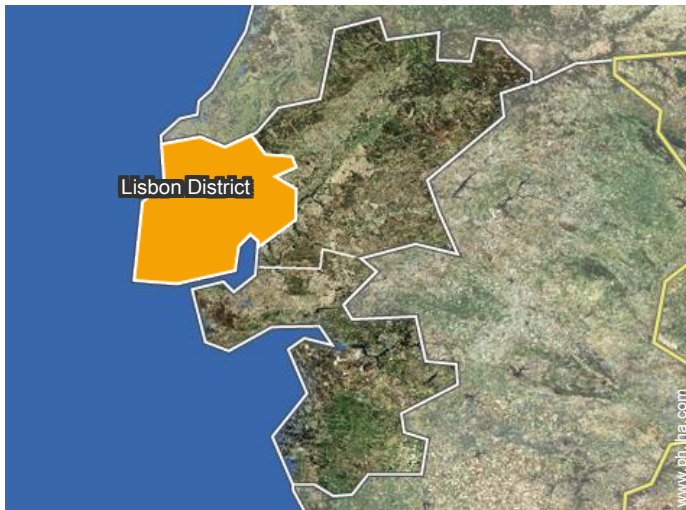


bedroom



shower room

Location



Location & Access

" From Lisbon Airport: bus 744 and 783 and aerobus (shuttle), live up to the apartment. Metro: red line, yellow line correspondence. From the apartment: Metro: blue line, yellow line, Marks of Pombal, Picoas stations. and Parque bus: 736, direct to Rossio and Praça do Comércio 727, live up to Belém and Museu Nacional de Arte Antiga 712, direct to the flea market and Santa Apolónia train station "



GPS coordinates in degrees, minutes, seconds: Latitude 38°43'42"N - Longitude 9° 8'47"W ([Dwelling](#))

Address

→ Rua Sousa Martins 4
1050-218 Lisbon

• Airport Lisbon Portela

→ Lisbon, Lisbon District, Lisbon and Tagus Valley, Portugal
→ Distance : 5km
→ Time : 30'

Contact

Spoken languages



Vacation rental

Lisbon District - Lisbon and Tagus Valley

Apartment-Flat

Availability calendar - from : november 2019

Nov	F	Sa	Su	M	Tu	W	Th	F	Sa	Su	M	Tu	W	Th	F	Sa	Su	M	Tu	W	Th	F	Sa	Su	M	Tu	W	Th	F	Sa	
2019	1	2	3	4	5	6	7	8	9	10	11	12	13	14	15	16	17	18	19	20	21	22	23	24	25	26	27	28	29	30	
Dec	Su	M	Tu	W	Th	F	Sa	Su	M	Tu	W	Th	F	Sa	Su	M	Tu	W	Th	F	Sa	Su	M	Tu	W	Th	F	Sa	Su	M	Tu
2019	1	2	3	4	5	6	7	8	9	10	11	12	13	14	15	16	17	18	19	20	21	22	23	24	25	26	27	28	29	30	31
	-	-	-	-	-	-	-	-	-	-	-	-	-	-	-	-	-	-	-	-	-	-	-	-	-	-	-	-	-	-	
Jan	W	Th	F	Sa	Su	M	Tu	W	Th	F	Sa	Su	M	Tu	W	Th	F	Sa	Su	M	Tu	W	Th	F	Sa	Su	M	Tu	W	Th	F
2020	1	2	3	4	5	6	7	8	9	10	11	12	13	14	15	16	17	18	19	20	21	22	23	24	25	26	27	28	29	30	31
	-	-	-	-	-	-	-	-	-	-	-	-	-	-	-	-	-	-	-	-	-	-	-	-	-	-	-	-	-	-	
Feb	Sa	Su	M	Tu	W	Th	F	Sa	Su	M	Tu	W	Th	F	Sa	Su	M	Tu	W	Th	F	Sa	Su	M	Tu	W	Th	F	Sa		
2020	1	2	3	4	5	6	7	8	9	10	11	12	13	14	15	16	17	18	19	20	21	22	23	24	25	26	27	28	29		
	-	-	-	-	-	-	-	-	-	-	-	-	-	-	-	-	-	-	-	-	-	-	-	-	-	-	-	-	-		
Mar	Su	M	Tu	W	Th	F	Sa	Su	M	Tu	W	Th	F	Sa	Su	M	Tu	W	Th	F	Sa	Su	M	Tu	W	Th	F	Sa	Su	M	Tu
2020	1	2	3	4	5	6	7	8	9	10	11	12	13	14	15	16	17	18	19	20	21	22	23	24	25	26	27	28	29	30	31
	-	-	-	-	-	-	-	-	-	-	-	-	-	-	-	-	-	-	-	-	-	-	-	-	-	-	-	-	-	-	
Apr	W	Th	F	Sa	Su	M	Tu	W	Th	F	Sa	Su	M	Tu	W	Th	F	Sa	Su	M	Tu	W	Th	F	Sa	Su	M	Tu	W	Th	
2020	1	2	3	4	5	6	7	8	9	10	11	12	13	14	15	16	17	18	19	20	21	22	23	24	25	26	27	28	29	30	
	-	-	-	-	-	-	-	-	-	-	-	-	-	-	-	-	-	-	-	-	-	-	-	-	-	-	-	-	-	-	
May	F	Sa	Su	M	Tu	W	Th	F	Sa	Su	M	Tu	W	Th	F	Sa	Su	M	Tu	W	Th	F	Sa	Su	M	Tu	W	Th	F	Sa	Su
2020	1	2	3	4	5	6	7	8	9	10	11	12	13	14	15	16	17	18	19	20	21	22	23	24	25	26	27	28	29	30	31
	-	-	-	-	-	-	-	-	-	-	-	-	-	-	-	-	-	-	-	-	-	-	-	-	-	-	-	-	-	-	
June	M	Tu	W	Th	F	Sa	Su	M	Tu	W	Th	F	Sa	Su	M	Tu	W	Th	F	Sa	Su	M	Tu	W	Th	F	Sa	Su	M	Tu	
2020	1	2	3	4	5	6	7	8	9	10	11	12	13	14	15	16	17	18	19	20	21	22	23	24	25	26	27	28	29	30	
	-	-	-	-	-	-	-	-	-	-	-	-	-	-	-	-	-	-	-	-	-	-	-	-	-	-	-	-	-	-	
Jul	W	Th	F	Sa	Su	M	Tu	W	Th	F	Sa	Su	M	Tu	W	Th	F	Sa	Su	M	Tu	W	Th	F	Sa	Su	M	Tu	W	Th	F
2020	1	2	3	4	5	6	7	8	9	10	11	12	13	14	15	16	17	18	19	20	21	22	23	24	25	26	27	28	29	30	31
	-	-	-	-	-	-	-	-	-	-	-	-	-	-	-	-	-	-	-	-	-	-	-	-	-	-	-	-	-	-	
Aug	Sa	Su	M	Tu	W	Th	F	Sa	Su	M	Tu	W	Th	F	Sa	Su	M	Tu	W	Th	F	Sa	Su	M	Tu	W	Th	F	Sa	Su	M
2020	1	2	3	4	5	6	7	8	9	10	11	12	13	14	15	16	17	18	19	20	21	22	23	24	25	26	27	28	29	30	31
	-	-	-	-	-	-	-	-	-	-	-	-	-	-	-	-	-	-	-	-	-	-	-	-	-	-	-	-	-	-	

 Reserved

Vacation rental
Lisbon - Portugal
Apartment-Flat

9

[Book now](#)

Availability calendar - from : august 2020

Sep	Tu	W	Th	F	Sa	Su	M	Tu	W	Th	F	Sa	Su	M	Tu	W	Th	F	Sa	Su	M	Tu	W							
2020	1	2	3	4	5	6	7	8	9	10	11	12	13	14	15	16	17	18	19	20	21	22	23	24	25	26	27	28	29	30
-	-	-	-	-	-	-	-	-	-	-	-	-	-	-	-	-	-	-	-	-	-	-	-	-	-	-	-	-	-	

Oct	Th	F	Sa	Su	M	Tu	W	Th	F	Sa	Su	M	Tu	W	Th	F	Sa	Su	M	Tu	W	Th	F	Sa							
2020	1	2	3	4	5	6	7	8	9	10	11	12	13	14	15	16	17	18	19	20	21	22	23	24	25	26	27	28	29	30	31
-	-	-	-	-	-	-	-	-	-	-	-	-	-	-	-	-	-	-	-	-	-	-	-	-	-	-	-	-	-		

Reserved

[Month : Next >>](#)

Rental rates - Apartment-Flat - from 1 to 2 Person(s)

Rates	Night	Weekend	week	2 weeks	Month
<input type="checkbox"/> Mid season	PHP3409* > 3	-	PHP21693*	-	-
> Minimum Night					

[Book now](#)

Booking conditions

- **Reservation**
→ Payment made upon reservation : 25% of rental sum
→ Payment balance : on handing over the keys
- **rentals**
→ Service charges included
→ Cleaning charge on departure included

Accepted methods of payment

- Bank transfer (wire) • PayPal • Cash

[▶ Book now](#)

[▶ Contact the owner](#)

Contact directly the property owners

www.ph.ih.com
Advert No.
67417
[>> Book now <<](#)

Contact

Spoken languages



* Converted at the rate indicated : €100 = \$110 = £91 = PHP6197.99

Advert No. 67417

www.ph.ih.com

