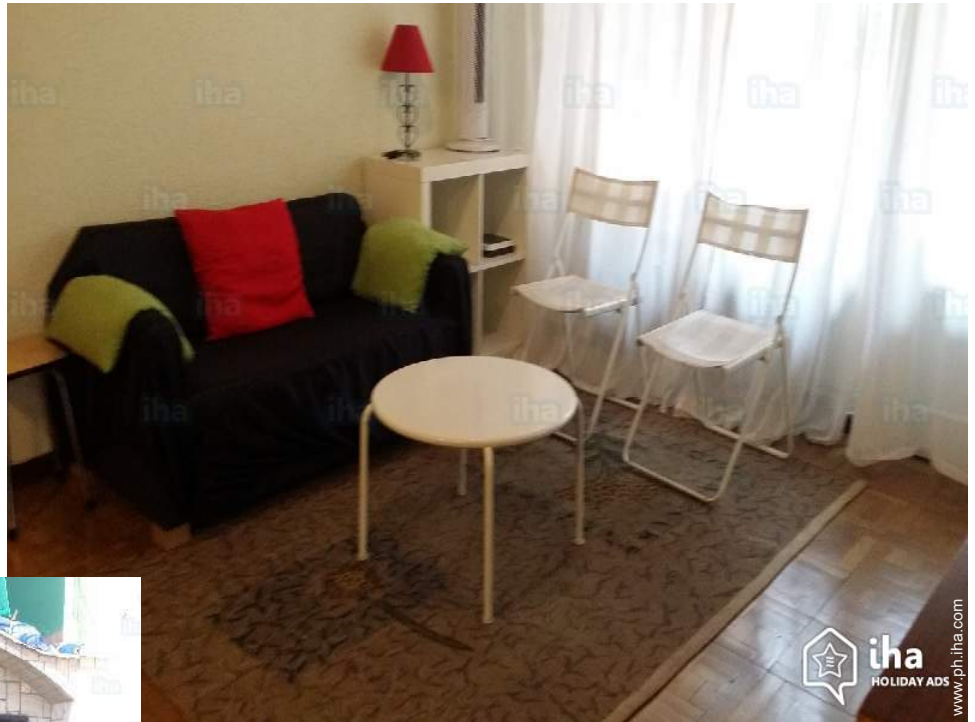


# Vacation rental Madrid "Edificio Praga"



**Apartment-Flat** 3rd floor, shared entrance, in(on) a(an) Apartment house/ building 10 floors

Setting : cultural, characteristic

Capacity : from 2 to 4 person(s)

Bedroom(s) : 2

Madrid - Madrid (autonomous community)

Spain

Advert No. 14641

[www.ph.iha.com](http://www.ph.iha.com)



### Vacation rental



Apartment-Flat 3rd floor, shared entrance, in(on) a(an) Apartment house/building 10 floors

- View : river, city
- Setting : cultural, characteristic

### Surroundings & location



City



Culture

Surroundings



the apartment house/building



master bedroom



Advert No. 14641

[www.ph.ihh.com](http://www.ph.ihh.com)





### Interior

- **Receive up to :**  
from 2 to 4 person(s)
- **Liveable floor area :**  
55m<sup>2</sup>
- **Interior layout :**  
2 bedroom(s), 1 bathroom, 1 shower room, living room 16m<sup>2</sup>, sitting room 15m<sup>2</sup>, separate kitchen, dining room
- **Sleeps - bed(s) :**  
1 full bed(s), 2 sleeper sofa(s) 2 pers, 1 twin bed(s), 1 sleeper sofa(s) 1 pers
- **Guest facilities :**  
Elevator, T.V., t.v points, cable/satellite, internet access, high speed internet access, wifi, partly air-conditioned, central heating, Drapes, Blinds, entry phone system, digipad entry gates
- **Appliances :**  
Crockery/flatware, kitchen utensils, cafetiere, electric coffee maker, electric kettle, toaster, juicer, electric stove, oven, micro-wave oven, extractor hood, refridgerator, deep freeze, washing machine, iron, ironing board

### Exterior

- **Ground surface :**  
150m<sup>2</sup>
- **Outside accommodation :**  
Terrace 5m<sup>2</sup>
- **Outside setting :**  
Yard



### Services

- **washing :**  
Sheets, Towels, Comforter(s), Pillows
- **Single family home :**  
Cleaning supplement

### For your guidance

- **For your guidance**  
Kids welcome  
No pet allowed  
Non smoking rental, cell phone network coverage  
Water : hot/cold  
Local voltage supply : 110-120V / 60Hz  
Electricity supply : mains



separate kitchen

Photo album - 1



the apartment house/building



master bedroom



separate kitchen

Photo album - 2



sitting room



sitting room



entry phone system

partly air-conditioned

Photo album - 3



shower room

shower room



separate kitchen



Interior layout

kitchen

view from the terrace



central heating

shower room

kitchen

### Location



### Location & Access



GPS coordinates in degrees, minutes, seconds: Latitude 40°23'27"N - Longitude 3°42'39"W ([Dwelling](#))

#### Address

→ Marques de Jura Real 27  
P. St. M. de la Cabeza 128  
28000 Madrid

#### • Airport Madrid Barajas

→ Madrid, Madrid (autonomous community), Spain  
→ Distance : 24km  
→ Time : 40'

#### • Railroad station Madrid Atocha

→ Madrid, Madrid (autonomous community), Spain  
→ Distance : 4km  
→ Time : 10'

#### • Freeway (exit) M-30

→ Madrid, Madrid (autonomous community), Spain

→ Distance : 2km  
→ Time : 10'

- Aranjuez : (50km)
- Alcalá de Henares : (40km)
- San Juan Reservoir : (65km)

### Contact

Spoken languages



# Vacation rental Madrid (autonomous community) - Spain "Edificio Praga"

8  
[Book now](#)

Availability calendar - from : january 2021

Jan	F	Sa	Su	M	Tu	W	Th	F	Sa	Su	M	Tu	W	Th	F	Sa	Su	M	Tu	W	Th	F	Sa	Su							
2021	1	2	3	4	5	6	7	8	9	10	11	12	13	14	15	16	17	18	19	20	21	22	23	24	25	26	27	28	29	30	31
																		-	-	-	-	-	-	-	-	-	-	-	-	-	

Feb	M	Tu	W	Th	F	Sa	Su	M	Tu	W	Th	F	Sa	Su	M	Tu	W	Th	F	Sa	Su							
2021	1	2	3	4	5	6	7	8	9	10	11	12	13	14	15	16	17	18	19	20	21	22	23	24	25	26	27	28
	-	-	-	-	-	-	-	-	-	-	-	-	-	-	-	-	-	-	-	-	-	-	-	-	-	-	-	-

Mar	M	Tu	W	Th	F	Sa	Su	M	Tu	W	Th	F	Sa	Su	M	Tu	W	Th	F	Sa	Su	M	Tu	W							
2021	1	2	3	4	5	6	7	8	9	10	11	12	13	14	15	16	17	18	19	20	21	22	23	24	25	26	27	28	29	30	31
	-	-	-	-	-	-	-	-	-	-	-	-	-	-	-	-	-	-	-	-	-	-	-	-	-	-	-	-	-	-	

Apr	Th	F	Sa	Su	M	Tu	W	Th	F	Sa	Su	M	Tu	W	Th	F	Sa	Su	M	Tu	W	Th	F							
2021	1	2	3	4	5	6	7	8	9	10	11	12	13	14	15	16	17	18	19	20	21	22	23	24	25	26	27	28	29	30
	-	-	-	-	-	-	-	-	-	-	-	-	-	-	-	-	-	-	-	-	-	-	-	-	-	-	-	-	-	-

May	Sa	Su	M	Tu	W	Th	F	Sa	Su	M	Tu	W	Th	F	Sa	Su	M	Tu	W	Th	F	Sa	Su	M							
2021	1	2	3	4	5	6	7	8	9	10	11	12	13	14	15	16	17	18	19	20	21	22	23	24	25	26	27	28	29	30	31
	-	-	-	-	-	-	-	-	-	-	-	-	-	-	-	-	-	-	-	-	-	-	-	-	-	-	-	-	-	-	

June	Tu	W	Th	F	Sa	Su	M	Tu	W	Th	F	Sa	Su	M	Tu	W	Th	F	Sa	Su	M	Tu	W							
2021	1	2	3	4	5	6	7	8	9	10	11	12	13	14	15	16	17	18	19	20	21	22	23	24	25	26	27	28	29	30
	-	-	-	-	-	-	-	-	-	-	-	-	-	-	-	-	-	-	-	-	-	-	-	-	-	-	-	-	-	-

Jul	Th	F	Sa	Su	M	Tu	W	Th	F	Sa	Su	M	Tu	W	Th	F	Sa	Su	M	Tu	W	Th	F	Sa							
2021	1	2	3	4	5	6	7	8	9	10	11	12	13	14	15	16	17	18	19	20	21	22	23	24	25	26	27	28	29	30	31
	-	-	-	-	-	-	-	-	-	-	-	-	-	-	-	-	-	-	-	-	-	-	-	-	-	-	-	-	-	-	

Aug	Su	M	Tu	W	Th	F	Sa	Su	M	Tu	W	Th	F	Sa	Su	M	Tu	W	Th	F	Sa	Su	M	Tu							
2021	1	2	3	4	5	6	7	8	9	10	11	12	13	14	15	16	17	18	19	20	21	22	23	24	25	26	27	28	29	30	31
	-	-	-	-	-	-	-	-	-	-	-	-	-	-	-	-	-	-	-	-	-	-	-	-	-	-	-	-	-	-	

Sep	W	Th	F	Sa	Su	M	Tu	W	Th	F	Sa	Su	M	Tu	W	Th	F	Sa	Su	M	Tu	W	Th							
2021	1	2	3	4	5	6	7	8	9	10	11	12	13	14	15	16	17	18	19	20	21	22	23	24	25	26	27	28	29	30
	-	-	-	-	-	-	-	-	-	-	-	-	-	-	-	-	-	-	-	-	-	-	-	-	-	-	-	-	-	-

Oct	F	Sa	Su	M	Tu	W	Th	F	Sa	Su	M	Tu	W	Th	F	Sa	Su	M	Tu	W	Th	F	Sa	Su							
2021	1	2	3	4	5	6	7	8	9	10	11	12	13	14	15	16	17	18	19	20	21	22	23	24	25	26	27	28	29	30	31
	-	-	-	-	-	-	-	-	-	-	-	-	-	-	-	-	-	-	-	-	-	-	-	-	-	-	-	-	-	-	

Mid season  High season



Vacation rental  
Madrid - Spain  
"Edificio Praga"

9  
[Book now](#)

Availability calendar - from : october 2021

Nov	M	Tu	W	Th	F	Sa	Su	M	Tu	W	Th	F	Sa	Su	M	Tu	W	Th	F	Sa	Su	M	Tu	
2021	1	2	3	4	5	6	7	8	9	10	11	12	13	14	15	16	17	18	19	20	21	22	23	24
	-	-	-	-	-	-	-	-	-	-	-	-	-	-	-	-	-	-	-	-	-	-	-	

Dec	W	Th	F	Sa	Su	M	Tu	W	Th	F	Sa	Su	M	Tu	W	Th	F	Sa	Su	M	Tu	W	Th	F
2021	1	2	3	4	5	6	7	8	9	10	11	12	13	14	15	16	17	18	19	20	21	22	23	24
	-	-	-	-	-	-	-	-	-	-	-	-	-	-	-	-	-	-	-	-	-	-	-	-

■ Mid season ■ High season

[Month : Next >>](#)

Rental rates - Apartment-Flat - from 2 to 4 Person(s)

Rates	Night	Weekend	week	2 weeks	Month
<span style="color: #4F81BD;">■</span> Mid season	PHP3347* > 4	-	PHP20453*	PHP35329*	PHP47105*
<span style="color: #E67E22;">■</span> High season	PHP3905* > 4	-	PHP24792*	PHP42146*	PHP53923*
<span style="color: #E91E63;">■</span> Festive specials	-	-	PHP28511*	-	-
<span style="color: #FFC107;">■</span> Promotional period	-	-	-	PHP41527*	-

> Minimum Night

[Book now](#)

Booking conditions

• Reservation

→ Payment made upon reservation :  
30% of rental sum  
→ Payment balance :  
1 day before the stay

• rentals

→ Service charges included  
→ Day tax included  
→ Cleaning charge levy on departure :  
PHP2789\*

[▶ Book now](#)

[▶ Contact the owner](#)

Accepted methods of payment

• Visa/Delta/Electron • International  
Money Order • Bank transfer (wire) •  
MasterCard/EuroCard

Contact directly the property owners

[www.ph.ih.com](http://www.ph.ih.com)  
Advert No.  
14641  
[>> Book now <<](#)

Contact

Spoken  
languages



\* Converted at the rate indicated : €100 = \$110 = £91 = PHP6197.99

Advert No. 14641

[www.ph.ih.com](http://www.ph.ih.com)



[>> VACATION HOMES](#)

DIRECT BY OWNERS