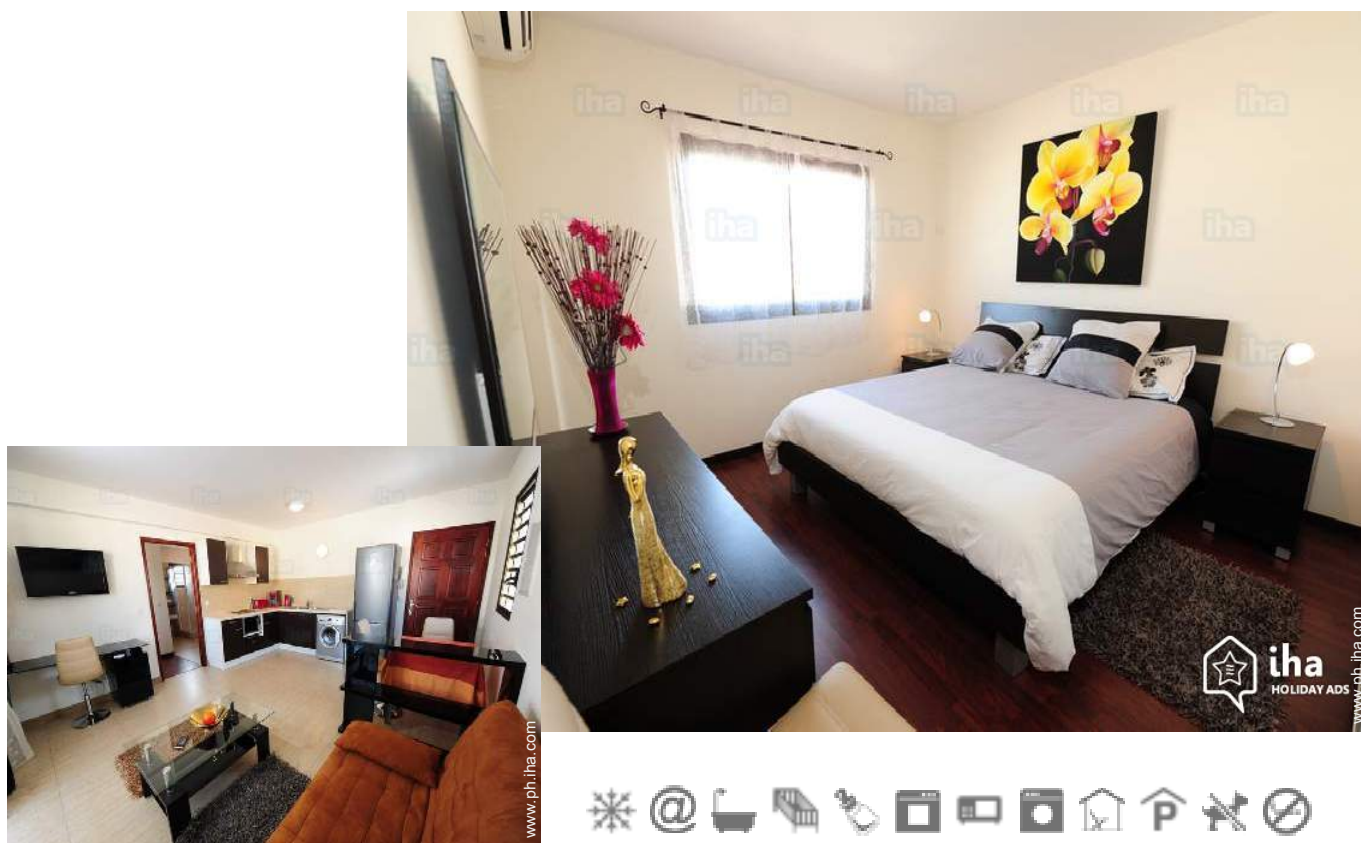


Vacation rental Nouméa "ENTRE CIEL ET TERRE"

In the heart of Nouméa, the Latin Quarter offers holidaymakers and business travellers the proximity of all kinds of shops. Everything is done on foot. Lines of bus 2 min. for all destinations.



Apartment-Flat 4nd floor, separate entrance, in(on) a(an) Apartment house/ building 6 floors

Setting : pleasant, condusive to shopping

Capacity : from 1 to 4 person(s)

Bedroom(s) : 1

Room(s) : 3



Eurogîtes ()
Gîtes de France (3 ears)

Nouméa - South Province - Grande Terre (New Caledonia)
New Caledonia

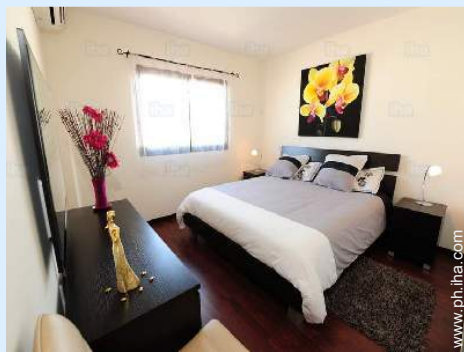
Reservation : +687 (0) 449002 (New Caledonia)

Advert No. 50035

www.ph.ih.com



Vacation rental



Apartment-Flat 4nd floor, separate entrance, in(on) a(an) Apartment house/building 6 floors

- **Ideal for all age groups, couples**
- **View :** city, street/avenue
- **Setting :** pleasant, condusive to shopping

" The apartment itself has all the necessary equipment. Bath towels, spare sheets, etc. You are in this apartment at home. Possibility to cook. Although very central apartment is quiet, ventilated and bright. It is located in a building above the parking lots. It offers private parking and parking visitors. In the neighbourhood you will find at the bottom of the building a small grocery on the perpendicular Street a bakery and in the parallel Street, one of the best restaurants in the city. You also have a pharmacy, the street of the banks, the market, the municipal police, the post office. Can't find better location. "

Assets

- **Parking :**
 Covered parking : 1 communal. Parking uncovered : 1 internal.
- **baby equipment :**
 High chair, baby potty

Surroundings & location



" 5 min. by bus from the beaches. Departure from Anse-Vata on islets in front by taxi boat. Spend the day on the duck island or l ' îlot Maître. Possibility to also spend a day at the Amedee with meals and Tahitian dances to the program. "

Leisure

- **Leisure activities less than 12 miles :**
 Bathing, pedalo, snorkelling, jet ski, surfing, windsurfing, sailing, kite surfing, golf, tennis, squash, riding school, pony club, pathway/broadwalk, coastal/forest paths, hiking, rock climbing, kite flying, paragliding, boat trips, horse-drawn carriage, skate board (ramps), go-karting, ten-pin bowling, basketball, volleyball, hunting, acrobanch, fishing, pétanque field
- **Supervised :**
 Sailing school, dive school, tennis school, riding school
- **Attractions and relaxation :**
 Bar/pub, discotheque, restaurant, movie theater, open air summer movie theater, karaoke, park and garden, leisure park, zoo/animal park, exhibition center, art gallery, historical site, museum, theater, summer theater, festivals, antiques & bric-a-brac, local craftstore, casino, race track, thalassotherapy center, sauna, steam baths, health spa, beauticians, fitness center

Surroundings

- **Locality :**
 Heated swimming pool 1km
 Sea/ocean 1km
 Sandy beach 1km
 Public swimming pool 1km
 Public tennis court 300m
 9 hole golf course 10km
 Windsurfing spots 1km
 Watersports centre 1km
 Marina 500m
 Slipway 800m
- **Amenities :**
 Kindergarten 500m
 Village center <50m
 Downtown 200m
 Bus stop / bus station 100m
 Bus pick up point beach 100m
 Bike/mountain bike hire 1km
 Scooter/motorbike hire 1km
 Car rental 800m
 Boat rental 500m
 Scuba diving material hire 1km
 Household linens for hire/laundry services 100m
 Breadstore 50m
 Caterer 50m

- Local stores <50m
- Supermarket 800m
- High class retailers <50m
- Hairdressing salon <50m
- Internet cafe 200m
- Mail office 100m
- Bank 50m
- ATM 50m
- Drugstore 50m
- Doctor 100m
- Nurse 500m
- Hospital 30km
- Dispensary 1km



living room



living room



bathroom

Interior

- **Receive up to :**

from 1 to 4 person(s) (2 adults, 2 kids)

- **Liveable floor area :**

40m²

- **Interior layout :**

3 Room(s), 1 bedroom(s), 1 bathroom, 1 toilets, living room 22m², american style kitchen, dining area, tv den, office

- **Sleeps - bed(s) :**

1 full bed(s), 1 sleeper sofa(s) 2 pers, 1 baby cradle

- **Guest facilities :**

Elevator, T.V., DVD player, t.v points, phone, internet access, wifi, wardrobe, cupboard, Hanging wardrobe, hair dryer, partly air-conditioned, Glazed in area, Drapes, Blinds, Rolling shutters, electric shutters, entry phone system, remote controlled gates, digipad entry gates

- **Appliances :**

Crockery/flatware, kitchen utensils, cafetiere, electric coffee maker, electric kettle, toaster, juicer, food processor, electric stove, electric hobs, oven, micro-wave oven, extractor hood, refridgerator, deep freeze, washing machine, vacuum cleaner, iron, ironing board

Exterior

- **Outside accommodation :**

Covered terrace 5m²

Services

- **washing :**

Sheets, Towels, Linen, Comforter(s), Comforter(s), Pillows

- **Single family home :**

Cleaning on departure supplement (+ PHP2655*), Parking, Airport transfers supplement (+PHP1896*)

For your guidance

- **For your guidance**

Kids welcome

No pet allowed

Non smoking rental, cell phone network coverage

Water : hot/cold

Electricity supply : individual generator



kitchen

Photo album - 1



living room



living room



bathroom




kitchen

Location



Location & Access

" Aircraft often arriving late at night, it is advisable to passengers arriving to a carrier with which we work and allows us to accompany you to the receptacle. Indeed, due to the fatigue of the journey, it is inadvisable to take the car (still for 50 km to Nouméa) for half an hour drive. The canoe is a dangerous to place. "

 GPS coordinates in degrees, minutes, seconds: Latitude 22°16'32"S - Longitude 166°26'47"E ([Dwelling](#))

Address

→ Rue Charles Verneilh
Quartier Latin
98800 Nouméa

→ Time : 5'

• [Airport La Tontouta](#)

→ Nouméa, South Province, Grande Terre
(New Caledonia), New Caledonia
→ Distance : 50km
→ Time : 30'

• [Sea port Nouméa Port Moselle](#)

→ Nouméa, South Province, Grande Terre
(New Caledonia), New Caledonia
→ Distance : 300m

Contact

Spoken
languages



Vacation rental
Grande Terre (New Caledonia) - New Caledonia
"ENTRE CIEL ET TERRE"

6

[Book now](#)

Availability calendar - from : february 2018

Feb	Th	F	Sa	Su	M	Tu	W	Th	F	Sa	Su	M	Tu	W	Th	F	Sa	Su	M	Tu	W	Th	F	Sa	Su	M	Tu	W
2018	1	2	3	4	5	6	7	8	9	10	11	12	13	14	15	16	17	18	19	20	21	22	23	24	25	26	27	28
																				-	-	-	-	-	-	-	-	-

Mar	Th	F	Sa	Su	M	Tu	W	Th	F	Sa	Su	M	Tu	W	Th	F	Sa	Su	M	Tu	W	Th	F	Sa	Su	M	Tu	W	Th	F	Sa
2018	1	2	3	4	5	6	7	8	9	10	11	12	13	14	15	16	17	18	19	20	21	22	23	24	25	26	27	28	29	30	31
	-	-	-	-	-	-	-	-	-	-	-	-	-	-	-	-	-	-	-	-	-	-	-	-	-	-	-	-	-	-	

Apr	Su	M	Tu	W	Th	F	Sa	Su	M	Tu	W	Th	F	Sa	Su	M	Tu	W	Th	F	Sa	Su	M							
2018	1	2	3	4	5	6	7	8	9	10	11	12	13	14	15	16	17	18	19	20	21	22	23	24	25	26	27	28	29	30
	-	-	-	-	-	-	-	-	-	-	-	-	-	-	-	-	-	-	-	-	-	-	-	-	-	-	-	-	-	

May	Tu	W	Th	F	Sa	Su	M	Tu	W	Th	F	Sa	Su	M	Tu	W	Th	F	Sa	Su	M	Tu	W	Th	F	Sa	Su	M	Tu	W	Th
2018	1	2	3	4	5	6	7	8	9	10	11	12	13	14	15	16	17	18	19	20	21	22	23	24	25	26	27	28	29	30	31
	-	-	-	-	-	-	-	-	-	-	-	-	-	-	-	-	-	-	-	-	-	-	-	-	-	-	-	-	-	-	

June	F	Sa	Su	M	Tu	W	Th	F	Sa	Su	M	Tu	W	Th	F	Sa	Su	M	Tu	W	Th	F	Sa							
2018	1	2	3	4	5	6	7	8	9	10	11	12	13	14	15	16	17	18	19	20	21	22	23	24	25	26	27	28	29	30
	-	-	-	-	-	-	-	-	-	-	-	-	-	-	-	-	-	-	-	-	-	-	-	-	-	-	-	-	-	

Jul	Su	M	Tu	W	Th	F	Sa	Su	M	Tu	W	Th	F	Sa	Su	M	Tu	W	Th	F	Sa	Su	M	Tu							
2018	1	2	3	4	5	6	7	8	9	10	11	12	13	14	15	16	17	18	19	20	21	22	23	24	25	26	27	28	29	30	31
	-	-	-	-	-	-	-	-	-	-	-	-	-	-	-	-	-	-	-	-	-	-	-	-	-	-	-	-	-		

Aug	W	Th	F	Sa	Su	M	Tu	W	Th	F	Sa	Su	M	Tu	W	Th	F	Sa	Su	M	Tu	W	Th	F	Sa	Su	M	Tu	W	Th	F
2018	1	2	3	4	5	6	7	8	9	10	11	12	13	14	15	16	17	18	19	20	21	22	23	24	25	26	27	28	29	30	31
	-	-	-	-	-	-	-	-	-	-	-	-	-	-	-	-	-	-	-	-	-	-	-	-	-	-	-	-	-	-	

Sep	Sa	Su	M	Tu	W	Th	F	Sa	Su	M	Tu	W	Th	F	Sa	Su	M	Tu	W	Th	F	Sa	Su							
2018	1	2	3	4	5	6	7	8	9	10	11	12	13	14	15	16	17	18	19	20	21	22	23	24	25	26	27	28	29	30
	-	-	-	-	-	-	-	-	-	-	-	-	-	-	-	-	-	-	-	-	-	-	-	-	-	-	-	-	-	

Oct	M	Tu	W	Th	F	Sa	Su	M	Tu	W	Th	F	Sa	Su	M	Tu	W	Th	F	Sa	Su	M	Tu	W							
2018	1	2	3	4	5	6	7	8	9	10	11	12	13	14	15	16	17	18	19	20	21	22	23	24	25	26	27	28	29	30	31
	-	-	-	-	-	-	-	-	-	-	-	-	-	-	-	-	-	-	-	-	-	-	-	-	-	-	-	-	-		

Nov	Th	F	Sa	Su	M	Tu	W	Th	F	Sa	Su	M	Tu	W	Th	F	Sa	Su	M	Tu	W	Th	F							
2018	1	2	3	4	5	6	7	8	9	10	11	12	13	14	15	16	17	18	19	20	21	22	23	24	25	26	27	28	29	30
	-	-	-	-	-	-	-	-	-	-	-	-	-	-	-	-	-	-	-	-	-	-	-	-	-	-	-	-	-	

Vacation rental
 Nouméa - New Caledonia
"ENTRE CIEL ET TERRE"

7
[Book now](#)





Availability calendar - from : november 2018

Dec	Sa	Su	M	Tu	W	Th	F	Sa	Su	M	Tu	W	Th	F	Sa	Su	M	Tu	W	Th	F	Sa	Su	M							
2018	1	2	3	4	5	6	7	8	9	10	11	12	13	14	15	16	17	18	19	20	21	22	23	24	25	26	27	28	29	30	31
-	-	-	-	-	-	-	-	-	-	-	-	-	-	-	-	-	-	-	-	-	-	-	-	-	-	-	-	-	-	-	

Jan	Tu	W	Th	F	Sa	Su	M	Tu	W	Th	F	Sa	Su	M	Tu	W	Th	F	Sa	Su	M	Tu	W	Th							
2019	1	2	3	4	5	6	7	8	9	10	11	12	13	14	15	16	17	18	19	20	21	22	23	24	25	26	27	28	29	30	31
-	-	-	-	-	-	-	-	-	-	-	-	-	-	-	-	-	-	-	-	-	-	-	-	-	-	-	-	-	-	-	

[Month : Next >>](#)

Rental rates - Apartment-Flat - from 1 to 4 Person(s)

Rates	Night	Weekend	week	2 weeks	Month
 Low season	-	-	PHP26546* (Monday)	-	-
 Mid season	-	-	PHP26546* (Monday)	-	-
 High season	-	-	PHP26546* (Monday)	-	-
 Promotional period	-	-	PHP23892* (Monday)	-	-

(Check-in day)

[Book now](#)

Booking conditions

• **Reservation**

→ Payment made upon reservation :
 30% of rental sum
 → Payment balance :
 on handing over the keys

• **rentals**

→ Service charges included
 → Cleaning charge levy on departure :
 PHP2655*

[▶ Book now](#)

[▶ Contact the owner](#)

Accepted methods of payment

• Visa/Delta/Electron • Bank transfer
 (wire) • Cash

Contact directly the property owners

www.ph.ih.com
Advert No.
50035
>> Book now <<

Contact

Spoken
 languages



* Converted at the rate indicated : €100 = \$123.46 = £88.94 = PHP6320.57

Advert No. 50035

www.ph.ih.com

