

Vacation rental Pornichet "Le Galatée"

Quiet and bright apartment, just a stone's throw from the market and the port of Pornichet.



Apartment-Flat 3rd floor, shared entrance, in(on) a(an) Apartment house/building 4 floors

Setting : quiet

Capacity : from 2 to 4 person(s)

Bedroom(s) : 2

Room(s) : 3



Meublés de Tourisme (3 stars)

Pornichet - Loire Atlantique (44) - Pays de la Loire
France

Reservation : +33 (0) 243028236 (France)

Advert No. 72342

www.ph.ih.com



Vacation rental



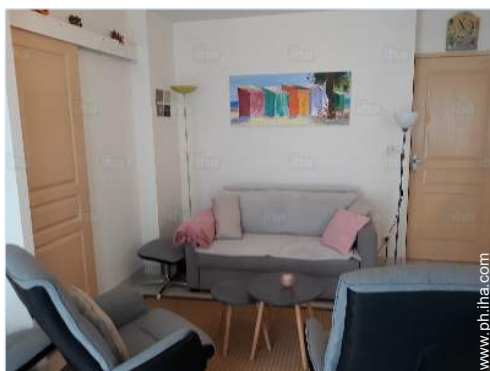
Apartment-Flat 3rd floor, shared entrance, in(on) a(an) Apartment house/building 4 floors

- View : sea/ocean, harbour, square
- Setting : quiet

" Great accommodation very well equipped and furnished, in a recent building, with elevator and private covered parking. Next to the halls and all shops. Walking access to the beach, the marina and the steep coast towards St Nazaire. "

Assets

- Parking :
Covered parking : 1 communal.



tv den

Surroundings & location



Ocean



Golf



Fishing



Thalasso



Festival

" Nearby: the beautiful Bay of La Baule, its beach and its water sports. The Casino, the Hippodrome, the Thalasso of Pornichet. To discover: the salt marshes of the Brière, the shipbuilding of St Nazaire, etc. "

Leisure

- Leisure activities less than 12 miles :

Bathing, water skiing, jet ski, surfing, windsurfing, sailing, kite surfing, canoeing, golf, tennis, riding school, pony club, pathway/broadwalk, coastal/forest paths, hiking, mountain bike (path), boat trips, horse trekking, mini-golf, rollerblade/rollerskate (circuit), basketball, volleyball, fishing, fishing, pétanque field

- Supervised :

Sailing school, tennis school, riding school

- Attractions and relaxation :

Bar/pub, discotheque, restaurant, movie theater, park and garden, nature reserve, exhibition center, art gallery, theater, festivals, antiques & bric-a-brac, local craftstore, cellar and wine tasting, casino, race track, thalassotherapy center, beauticians, fitness center, Bio farm

Surroundings

- Locality :

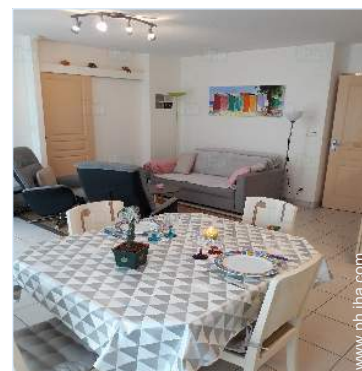
Sea/ocean 100m
Sandy beach 300m
Marina 300m
Slipway 300m

- Amenities :

Downtown 100m
Bus pick up point beach 100m
Bike/mountain bike hire 300m
Household linens for hire/laundry services 50m
Breadstore 100m
Caterer 100m
Local stores 100m
Supermarket 500m
High class retailers 100m
Hairdressing salon 100m
Mail office 100m
Bank 100m
ATM 100m
Drugstore 100m
Doctor 100m
Nurse 100m
Hospital 10km



Kitchen Area



dining area



dining area

Interior

- **Receive up to :**
from 2 to 4 person(s) (2 adults, 2 kids)
- **Liveable floor area :**
50m²
- **Interior layout :**
3 Room(s), 2 bedroom(s), 1 shower room, 1 toilets, living room 28m², Kitchen Area, dining area, tv den
- **Sleeps - bed(s) :**
1 full bed(s), 1 sleeper sofa(s) 2 pers, 1 bunk beds
- **Guest facilities :**
Elevator, T.V., board games, wifi, wardrobe, cupboard, Hanging wardrobe, heated towel rail, electric heating, Glazed in area, Drapes, Double glazed, Rolling shutters, entry phone system, remote controlled gates
- **Appliances :**
Crockery/flatware, kitchen utensils, electric coffee maker, electric kettle, toaster, electric hobs, oven, micro-wave oven, extractor hood, refridgerator, dish washer, washing machine, vacuum cleaner, iron, ironing board

Exterior

- **Outside accommodation :**
Balcony 3m²
- **Outside amenities :**
2 sun recliner(s)



master bedroom

Services

- **washing :**
Sheets supplement (1 X / per week + PHP1488*), Towels supplement (1 X / per week +PHP124*), Linen supplement (1 X / per week +PHP124*), Comforter(s) (1 X / per week), Pillows (1 X / per week)
- **Single family home :**
Cleaning on departure supplement (+ PHP1488*)

For your guidance

- **For your guidance**
Kids welcome
No pet allowed
Non smoking rental, cell phone network coverage
Water : hot/cold
Local voltage supply : 220-240V / 50Hz



Kid's room

Photo album - 1



tv den



dining area



Kitchen Area



dining area

Photo album - 2



Kid's room



master bedroom



shower room

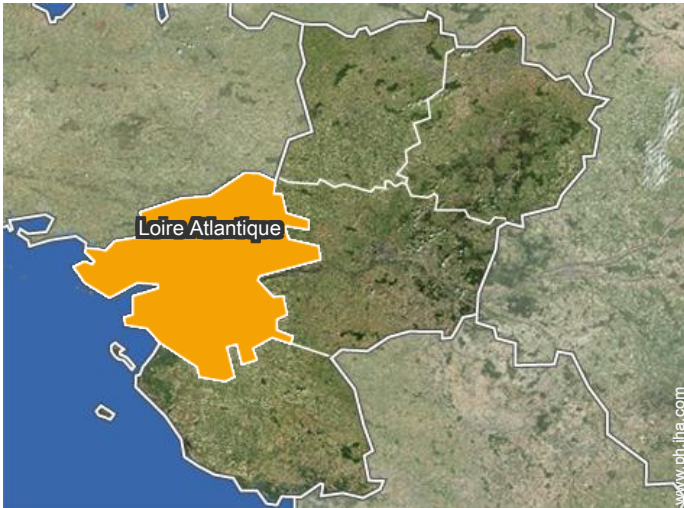


view of the port



Ocean

Location



Location & Access

" SNCF station: 800m - La Baule centre: 5kms - St Nazaire centre: 12kms - Guérande centre: 15kms. "



GPS coordinates in degrees, minutes, seconds: Latitude 47°15'48"N - Longitude 2°20'26"W (Dwelling)

Address

→ 6 avenue Louis Barthou
44380 Pornichet

• Railroad station Pornichet

→ Pornichet, Loire Atlantique, Pays de la Loire, France

→ Distance : 800m

- La Baule Escoublac : (5km)
- Saint Nazaire : (10km)
- Guérande : (12km)

Contact

Spoken languages



Vacation rental
Pornichet - France
"Le Galatée"

7
[Book now](#)

Availability calendar - from : september 2021

Sep	W	Th	F	Sa	Su	M	Tu	W	Th	F	Sa	Su	M	Tu	W	Th	F	Sa	Su	M	Tu	W	Th							
2021	1	2	3	4	5	6	7	8	9	10	11	12	13	14	15	16	17	18	19	20	21	22	23	24	25	26	27	28	29	30
																	-	-	-	-	-	-	-	-	-	-	-	-	-	

Oct	F	Sa	Su	M	Tu	W	Th	F	Sa	Su	M	Tu	W	Th	F	Sa	Su	M	Tu	W	Th	F	Sa	Su							
2021	1	2	3	4	5	6	7	8	9	10	11	12	13	14	15	16	17	18	19	20	21	22	23	24	25	26	27	28	29	30	31
	-	-	-	-	-	-	-	-	-	-	-	-	-	-	-	-	-	-	-	-	-	-	-	-	-	-	-	-	-	-	

Nov	M	Tu	W	Th	F	Sa	Su	M	Tu	W	Th	F	Sa	Su	M	Tu	W	Th	F	Sa	Su	M	Tu							
2021	1	2	3	4	5	6	7	8	9	10	11	12	13	14	15	16	17	18	19	20	21	22	23	24	25	26	27	28	29	30
	-	-	-	-	-	-	-	-	-	-	-	-	-	-	-	-	-	-	-	-	-	-	-	-	-	-	-	-	-	-

Dec	W	Th	F	Sa	Su	M	Tu	W	Th	F	Sa	Su	M	Tu	W	Th	F	Sa	Su	M	Tu	W	Th	F							
2021	1	2	3	4	5	6	7	8	9	10	11	12	13	14	15	16	17	18	19	20	21	22	23	24	25	26	27	28	29	30	31
	-	-	-	-	-	-	-	-	-	-	-	-	-	-	-	-	-	-	-	-	-	-	-	-	-	-	-	-	-	-	

Jan	Sa	Su	M	Tu	W	Th	F	Sa	Su	M	Tu	W	Th	F	Sa	Su	M	Tu	W	Th	F	Sa	Su	M							
2022	1	2	3	4	5	6	7	8	9	10	11	12	13	14	15	16	17	18	19	20	21	22	23	24	25	26	27	28	29	30	31
	-	-	-	-	-	-	-	-	-	-	-	-	-	-	-	-	-	-	-	-	-	-	-	-	-	-	-	-	-	-	

Feb	Tu	W	Th	F	Sa	Su	M	Tu	W	Th	F	Sa	Su	M	Tu	W	Th	F	Sa	Su	M							
2022	1	2	3	4	5	6	7	8	9	10	11	12	13	14	15	16	17	18	19	20	21	22	23	24	25	26	27	28
	-	-	-	-	-	-	-	-	-	-	-	-	-	-	-	-	-	-	-	-	-	-	-	-	-	-	-	-

Mar	Tu	W	Th	F	Sa	Su	M	Tu	W	Th	F	Sa	Su	M	Tu	W	Th	F	Sa	Su	M	Tu	W	Th							
2022	1	2	3	4	5	6	7	8	9	10	11	12	13	14	15	16	17	18	19	20	21	22	23	24	25	26	27	28	29	30	31
	-	-	-	-	-	-	-	-	-	-	-	-	-	-	-	-	-	-	-	-	-	-	-	-	-	-	-	-	-	-	

Apr	F	Sa	Su	M	Tu	W	Th	F	Sa	Su	M	Tu	W	Th	F	Sa	Su	M	Tu	W	Th	F	Sa							
2022	1	2	3	4	5	6	7	8	9	10	11	12	13	14	15	16	17	18	19	20	21	22	23	24	25	26	27	28	29	30
	-	-	-	-	-	-	-	-	-	-	-	-	-	-	-	-	-	-	-	-	-	-	-	-	-	-	-	-	-	

May	Su	M	Tu	W	Th	F	Sa	Su	M	Tu	W	Th	F	Sa	Su	M	Tu	W	Th	F	Sa	Su	M	Tu							
2022	1	2	3	4	5	6	7	8	9	10	11	12	13	14	15	16	17	18	19	20	21	22	23	24	25	26	27	28	29	30	31
	-	-	-	-	-	-	-	-	-	-	-	-	-	-	-	-	-	-	-	-	-	-	-	-	-	-	-	-	-	-	

June	W	Th	F	Sa	Su	M	Tu	W	Th	F	Sa	Su	M	Tu	W	Th	F	Sa	Su	M	Tu	W	Th							
2022	1	2	3	4	5	6	7	8	9	10	11	12	13	14	15	16	17	18	19	20	21	22	23	24	25	26	27	28	29	30
	-	-	-	-	-	-	-	-	-	-	-	-	-	-	-	-	-	-	-	-	-	-	-	-	-	-	-	-	-	

Vacation rental
Loire Atlantique - Pays de la Loire
"Le Galatée"

8
[Book now](#)





Availability calendar - from : june 2022

Jul	F	Sa	Su	M	Tu	W	Th	F	Sa	Su	M	Tu	W	Th	F	Sa	Su	M	Tu	W	Th	F	Sa	Su							
2022	1	2	3	4	5	6	7	8	9	10	11	12	13	14	15	16	17	18	19	20	21	22	23	24	25	26	27	28	29	30	31
-	-	-	-	-	-	-	-	-	-	-	-	-	-	-	-	-	-	-	-	-	-	-	-	-	-	-	-	-	-	-	

Aug	M	Tu	W	Th	F	Sa	Su	M	Tu	W	Th	F	Sa	Su	M	Tu	W	Th	F	Sa	Su	M	Tu	W							
2022	1	2	3	4	5	6	7	8	9	10	11	12	13	14	15	16	17	18	19	20	21	22	23	24	25	26	27	28	29	30	31
-	-	-	-	-	-	-	-	-	-	-	-	-	-	-	-	-	-	-	-	-	-	-	-	-	-	-	-	-	-	-	

[Month : Next >>](#)

Rental rates - Apartment-Flat - from 2 to 4 Person(s)

Rates	Night	Weekend	week	2 weeks	Month
 Low season	-	-	PHP30370* (Saturday)	-	-
 Mid season	-	-	PHP34709* (Saturday)	-	-
 High season	-	-	PHP40907* (Saturday)	-	-
 Promotional period	-	-	PHP30370*	-	-

(Check-in day)

[Book now](#)

Booking conditions

• Reservation

- Payment made upon reservation : PHP15495*
- Payment balance : 2 weeks before the stay
- Deposit required : PHP18594*

• rentals

- Service charges included
- Day tax in addition

[▶ Book now](#)

[▶ Contact the owner](#)

Accepted methods of payment

- Check

Contact directly the property owners

www.ph.ih.com
Advert No.
72342
[>> Book now <<](#)

Contact

Spoken languages



* Converted at the rate indicated : €100 = \$110 = £91 = PHP6197.99

Advert No. 72342

www.ph.ih.com

