

# Vacation rental Pinares "Familia Bauzá"



**Apartment-Flat** 2nd floor, separate entrance, in(on) a(an) Traditional accommodation

Setting : pleasant, tranquil

Capacity : from 1 to 4 person(s)

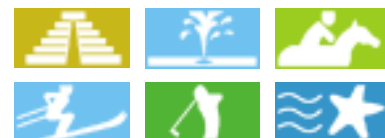
Bedroom(s) : 2

Room(s) : 4



Gîtes de France (4 ears)

S'Illot - Cala Morlanda - Majorca - Balearic Islands  
Spain



Advert No. 52282

[www.ph.ihacom](http://www.ph.ihacom)



>> VACATION HOMES

DIRECT BY OWNERS

### Vacation rental



Apartment-Flat 2nd floor, separate entrance, in(on) a(an) Traditional accommodation

- **Ideal for family, all age groups**
- **View :** panoramic, unobscured, sea/ocean, mountain, village, street/avenue
- **Setting :** pleasant, tranquil
- **Exposure :** East

### Surroundings & location



#### Leisure

- **Leisure activities less than 12 miles :**

Bathing, pedalo, snorkelling, scuba diving, Scuba diving (Standard diving dress), water skiing, surfing, golf, tennis, pathway/broadwalk, coastal/forest paths, hiking, kite flying, parascending, boat trips, horse-drawn carriage, horse trekking, donkey rides, mini-golf, hunting, safari, fishing, fishing, spear fishing, pétanque field

- **Attractions and relaxation :**

Bar/pub, discotheque, restaurant, movie theater, zoo/animal park, sea world, nature reserve, exhibition center, art gallery, historical site, theater, antiques & bric-a-brac, local craftstore, cellar and wine tasting, race track, natural spring baths, thermal baths, sauna, health spa, beauticians, fitness center

#### Surroundings

- **Locality :**

Sea/ocean 50m  
Sandy beach 200m  
Shingle beach 300m  
Nudist beach 500m  
Sea inlet 300m  
Public tennis court 200m  
Watersports centre 300m  
Cliff 50m  
Forest 2km

- **Amenities :**

Kindergarten 500m  
Village center <50m  
Bus stop / bus station 100m  
Bike/mountain bike hire 800m  
Scooter/motorbike hire  
Car rental  
Local stores 200m  
Supermarket 200m  
High class retailers 200m  
Hairdressing salon 100m  
Internet cafe 500m  
Drugstore 300m  
Doctor 500m  
Nurse 500m  
Hospital 15km  
Dispensary 500m



view from the terrace



view from the balcony



view from the apartment



façade

### Exterior

- **Outside accommodation :**  
Terrace 16m<sup>2</sup>, roof terrace 70m<sup>2</sup>, balcony 4m<sup>2</sup>, sundeck 30m<sup>2</sup>



furniture

### Interior

- **Receive up to :**  
from 1 to 4 person(s)
- **Liveable floor area :**  
70m<sup>2</sup>
- **Interior layout :**  
4 Room(s), 2 bedroom(s), 1 bathroom, separate kitchen, dining room, laundry room
- **Sleeps - bed(s) :**  
1 full bed(s), 2 twin bed(s)
- **Guest facilities :**  
T.V., vcr, DVD player, t.v points, cable/satelite, wifi, wardrobe, cupboard, Hanging wardrobe, hair dryer, mobile cool air fan, electric heating, Glazed in area, Drapes, Blinds, entry phone system
- **Appliances :**  
Crockery/flatware, kitchen utensils, cafetiere, electric kettle, toaster, juicer, electric stove, electric hobs, oven, micro-wave oven, extractor hood, refridgerator, deep freeze, washing machine, iron, ironing board

### Services

- **washing :**  
Sheets (6 X / per week), Towels (4 X / per week), Linen (6 X / per week), Comforter(s) (3 X / per week), Comforter(s) (3 X / per week), Pillows (4 X / per week)
- **Single family home :**  
Cleaning on departure, Airport transfers supplement (+PHP3719\*)

### For your guidance

- **For your guidance**  
Kids welcome  
Cell phone network coverage  
Water not drinkable  
Local voltage supply : 220-240V / 50Hz  
Electricity supply : mains



dining room



Photo album - 1



view from the terrace



view from the apartment

view from the balcony



façade



dining room

Photo album - 2



furniture

view from the apartment

view from the house



T.V.

kitchen

kitchen



full bed(s)

bedroom

bedroom



bathroom



Photo album - 3



bathroom



sandy beach



sandy beach



Ocean



Summer



ocean view



view over the sea



sleeping area



village center



Your hosts



### Location



### Location & Access



GPS coordinates in degrees, minutes, seconds: Latitude 39°33'41"N - Longitude 3°22'26"E ([Dwelling](#))

#### Address

→ Carrer de la Rosa, 3-1°  
07687 S'Illot - Cala Morlanda

#### ● Airport Palma de Mallorca

→ Palma de Mallorca, Majorca, Balearic Islands, Spain  
→ Distance : 65km  
→ Time : 1h

#### ● Sea port Palma de Mallorca

→ Palma de Mallorca, Majorca, Balearic Islands, Spain  
→ Distance : 65km  
→ Time : 1h

- Manacor : (14km)
- Cala Bona : (5km)
- Son Servera : (7,5km)

### Contact

Spoken languages



# Vacation rental Pinares - Spain "Familia Bauzá"

[Book now](#)

## Availability calendar - from : august 2018

Aug	W	Th	F	Sa	Su	M	Tu	W	Th	F	Sa	Su	M	Tu	W	Th	F	Sa	Su	M	Tu	W	Th	F							
2018	1	2	3	4	5	6	7	8	9	10	11	12	13	14	15	16	17	18	19	20	21	22	23	24	25	26	27	28	29	30	31

Sep	Sa	Su	M	Tu	W	Th	F	Sa	Su	M	Tu	W	Th	F	Sa	Su	M	Tu	W	Th	F	Sa	Su							
2018	1	2	3	4	5	6	7	8	9	10	11	12	13	14	15	16	17	18	19	20	21	22	23	24	25	26	27	28	29	30
	-	-	-	-	-	-	-	-	-	-	-	-	-	-	-	-	-	-	-	-	-	-	-	-	-	-	-	-	-	-

Oct	M	Tu	W	Th	F	Sa	Su	M	Tu	W	Th	F	Sa	Su	M	Tu	W	Th	F	Sa	Su	M	Tu	W							
2018	1	2	3	4	5	6	7	8	9	10	11	12	13	14	15	16	17	18	19	20	21	22	23	24	25	26	27	28	29	30	31
	-	-	-	-	-	-	-	-	-	-	-	-	-	-	-	-	-	-	-	-	-	-	-	-	-	-	-	-	-	-	

Nov	Th	F	Sa	Su	M	Tu	W	Th	F	Sa	Su	M	Tu	W	Th	F	Sa	Su	M	Tu	W	Th	F							
2018	1	2	3	4	5	6	7	8	9	10	11	12	13	14	15	16	17	18	19	20	21	22	23	24	25	26	27	28	29	30
	-	-	-	-	-	-	-	-	-	-	-	-	-	-	-	-	-	-	-	-	-	-	-	-	-	-	-	-	-	-

Dec	Sa	Su	M	Tu	W	Th	F	Sa	Su	M	Tu	W	Th	F	Sa	Su	M	Tu	W	Th	F	Sa	Su	M							
2018	1	2	3	4	5	6	7	8	9	10	11	12	13	14	15	16	17	18	19	20	21	22	23	24	25	26	27	28	29	30	31
	-	-	-	-	-	-	-	-	-	-	-	-	-	-	-	-	-	-	-	-	-	-	-	-	-	-	-	-	-	-	


Jan	Tu	W	Th	F	Sa	Su	M	Tu	W	Th	F	Sa	Su	M	Tu	W	Th	F	Sa	Su	M	Tu	W	Th							
2019	1	2	3	4	5	6	7	8	9	10	11	12	13	14	15	16	17	18	19	20	21	22	23	24	25	26	27	28	29	30	31
	-	-	-	-	-	-	-	-	-	-	-	-	-	-	-	-	-	-	-	-	-	-	-	-	-	-	-	-	-	-	

Feb	F	Sa	Su	M	Tu	W	Th	F	Sa	Su	M	Tu	W	Th	F	Sa	Su	M	Tu	W	Th							
2019	1	2	3	4	5	6	7	8	9	10	11	12	13	14	15	16	17	18	19	20	21	22	23	24	25	26	27	28
	-	-	-	-	-	-	-	-	-	-	-	-	-	-	-	-	-	-	-	-	-	-	-	-	-	-	-	-

Mar	F	Sa	Su	M	Tu	W	Th	F	Sa	Su	M	Tu	W	Th	F	Sa	Su	M	Tu	W	Th	F	Sa	Su							
2019	1	2	3	4	5	6	7	8	9	10	11	12	13	14	15	16	17	18	19	20	21	22	23	24	25	26	27	28	29	30	31
	-	-	-	-	-	-	-	-	-	-	-	-	-	-	-	-	-	-	-	-	-	-	-	-	-	-	-	-	-	-	

Apr	M	Tu	W	Th	F	Sa	Su	M	Tu	W	Th	F	Sa	Su	M	Tu	W	Th	F	Sa	Su	M	Tu							
2019	1	2	3	4	5	6	7	8	9	10	11	12	13	14	15	16	17	18	19	20	21	22	23	24	25	26	27	28	29	30
	-	-	-	-	-	-	-	-	-	-	-	-	-	-	-	-	-	-	-	-	-	-	-	-	-	-	-	-	-	-

May	W	Th	F	Sa	Su	M	Tu	W	Th	F	Sa	Su	M	Tu	W	Th	F	Sa	Su	M	Tu	W	Th	F							
2019	1	2	3	4	5	6	7	8	9	10	11	12	13	14	15	16	17	18	19	20	21	22	23	24	25	26	27	28	29	30	31
	-	-	-	-	-	-	-	-	-	-	-	-	-	-	-	-	-	-	-	-	-	-	-	-	-	-	-	-	-	-	

 Reserved  High season





Vacation rental  
Majorca - Balearic Islands  
"Familia Bauzá"

9

[Book now](#)

Availability calendar - from : may 2019

June	Sa	Su	M	Tu	W	Th	F	Sa	Su	M	Tu	W	Th	F	Sa	Su	M	Tu	W	Th	F	Sa	Su							
2019	1	2	3	4	5	6	7	8	9	10	11	12	13	14	15	16	17	18	19	20	21	22	23	24	25	26	27	28	29	30
	-	-	-	-	-	-	-	-	-	-	-	-	-	-	-	-	-	-	-	-	-	-	-	-	-	-	-	-	-	






Jul	M	Tu	W	Th	F	Sa	Su	M	Tu	W	Th	F	Sa	Su	M	Tu	W	Th	F	Sa	Su	M	Tu	W							
2019	1	2	3	4	5	6	7	8	9	10	11	12	13	14	15	16	17	18	19	20	21	22	23	24	25	26	27	28	29	30	31
	-	-	-	-	-	-	-	-	-	-	-	-	-	-	-	-	-	-	-	-	-	-	-	-	-	-	-	-	-		

 Reserved

 High season

[Month : Next >>](#)

Rental rates - Apartment-Flat - from 1 to 4 Person(s)

Rates	Night	Weekend	week	2 weeks	Month
 Low season	PHP3719* > 7	-	PHP26032*	PHP47725*	PHP92970*
 Mid season	PHP4215* ↓ > 7	-	PHP29502*	PHP54666*	PHP105986*
 High season	PHP5578* ↓ > 7	-	PHP39047*	PHP73756*	PHP139455*
 Festive specials	-	-	-	-	PHP120861*
 Promotional period	PHP4958* ↓ > 7	-	PHP34709*	PHP65079*	PHP130158*

↓ Reducing rates > Minimum Night

[Book now](#)



view from the balcony



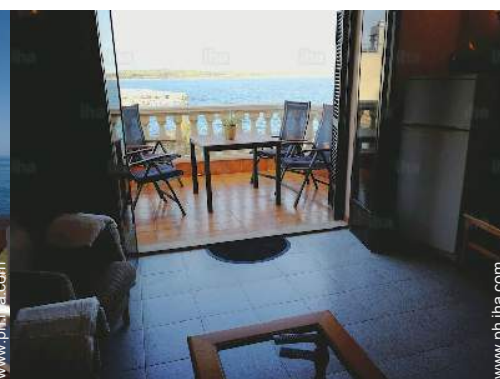
façade



dining room



view from the terrace



view from the apartment

### Booking conditions

- **Reservation**

→ Payment made upon reservation :  
30% of rental sum

- **rentals**

→ Service charges included  
→ Day tax included

### Accepted methods of payment

- Bank transfer (wire)

▶ [Book now](#)

▶ [Contact the owner](#)

Contact directly the property owners

[www.ph.ih.com](http://www.ph.ih.com)

Advert No.

52282

>> [Book now](#) <<

### Contact

Spoken languages



\* Converted at the rate indicated : €100 = \$116.85 = £89 = PHP6197.99

Advert No. 52282

[www.ph.ih.com](http://www.ph.ih.com)

