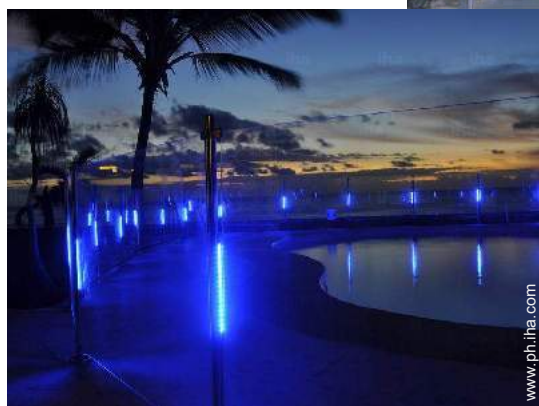


Vacation rental Saint Leu "Leu pied dans l'eau"

Nestled in the hollow of the Bay of Saint-Leu, we welcome our guests in a comfortable and friendly setting of standing.



Meublés de Tourisme (4 stars)

Villa, detached, 1 floor, separate entrance, in(on) a(an) Charming Property

Setting : waterfront

Capacity : from 1 to 24 person(s)
Bedroom(s) : 12

Saint Leu

Reunion Island

Reservation : +262 (0) 6 92 69 58 95 (Reunion Island)

Advert No. 56539

www.ph.ih.com



Vacation rental



Villa, detached, 1 floor, separate entrance, in(on) a(an) Charming Property

- View : panoramic, not overlooked, sea/ocean, swimming pool, fantastic sunset
- Setting : waterfront
- Exposure : West

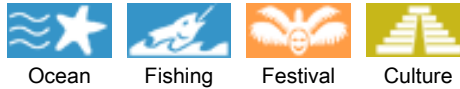
" Standing and creole charm villas displayed a traditional character while offering a high quality service. Their creole architecture highlights of the typical features of the Réunion habitat: siding wood, four-slope roof, veranda. Tradition meets modernity and we put at your disposal facilities and quality services: linen provided, full kitchen, wireless Internet access, private parking with video surveillance, heated pool and secure, pétanque Court, BBQ area. A bespoke service. the Veloutier, the Lataniers, the coconut and the mango tree villas are flexible and can accommodate 2 to 8 people. The main villa has a capacity of 8 people. In order to meet your expectations, we offer you: woman cleaning, babysitter, high chairs and cots, airport transfer. Jean-Jacques you welcome upon arrival and will be at your disposal to organise your stay. "

Assets

- **Swimming pool :**
 Shared swimming pool, unusual (length 12m, width 6m), heated, illuminated, steps in, outside shower (open from 'january 01' till 'december 31')
- **Parking :**
 Parking uncovered : 8 reserved stall.
- **Advantages :**
 Pétanque field
- **baby equipment :**
 High chair

Benefits :
 Direct access to the beach

Surroundings & location



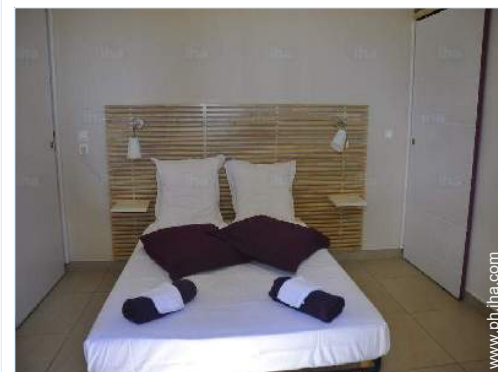
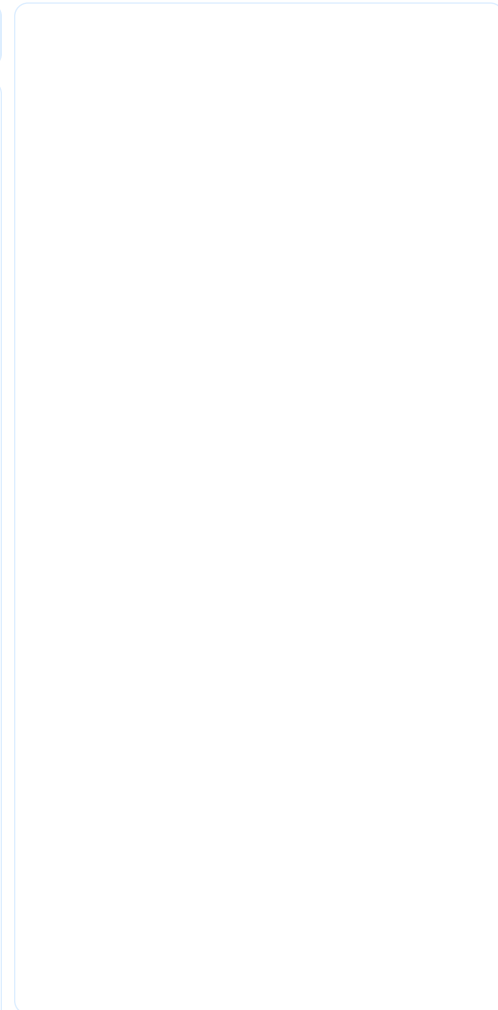
" Located on the West coast of the island, at the entrance to the small seaside town of Saint Leu, the catering is uniquely positioned. You will find many tourist activities nearby: Kelonia (Observatory of sea turtles), the Stella Matutina Museum, the Conservatory Mascarin National Botanical, the salt Museum. You can discover the volcanic coastline and the famous blower, indulge in many sports activities: paragliding, mountain biking, climbing, diving, fishing at the wholesale or just enjoy the beach. Surfing fans will enjoy the famous Saint Leu left, spot international reputation. The cultural activity of Saint Leu will seduce you by its diversity and richness: cultural circuits, tours, popular heritage, entertainment, festival... 5 minutes from the road to the Tamarins, Leu Pied Dans l'Eau is also an excellent starting point for your excursions in the island. "

Leisure

- **Leisure activities less than 12 miles :**
 Bathing, snorkelling, scuba diving, surfing, tennis, hiking, mountain bike (path), paragliding, skate board (ramps), volleyball, fishing, deep-sea fishing, fishing, spear fishing, pétanque field
- **Supervised :**
 Sailing school, dive school, tennis school
- **Attractions and relaxation :**
 Bar/pub, restaurant, sea world, historical site, museum, festivals

Surroundings

- **Locality :**
 Heated swimming pool
 Sea/ocean <50m
 Sandy beach 1km
 Shingle beach <50m
 Surfing spots 100m
 Marina 1km
- **Amenities :**
 Downtown 800m
 Bus stop / bus station 200m
 Bike/mountain bike hire 1,5km
 Car rental 1km
 Boat rental 300m
 Scuba diving material hire 800m
 Breadstore 800m
 Local stores 800m
 Supermarket 1,5km
 Hairdressing salon 800m
 Mail office 1km
 Bank 1km
 ATM 1km
 Drugstore 1km
 Doctor 1km
 Nurse 1km



bedroom



pool view



view over the sea

Interior

- **Receive up to :**
from 1 to 24 person(s)
- **Liveable floor area :**
300m²
- **Interior layout :**
12 bedroom(s)
- **Sleeps - bed(s) :**
12 full bed(s), 4 sleeper sofa(s) 2 pers, 2 baby cradle
- **Guest facilities :**
T.V., hi-fi system, wifi, radio alarmclock, hair dryer, fully air-conditioned
- **Appliances :**
Crockery/flatware, kitchen utensils, cafetiere, electric coffee maker, electric kettle, toaster, electric hobs, oven, micro-wave oven, extractor hood, refridgerator, dish washer

Exterior

- **Ground surface :**
2000m²
- **Outside accommodation :**
Terrace 9m², covered terrace 9m²
- **Outside setting :**
Enclosed grounds, tropical garden > 1000m², lawn
- **Outside amenities :**
BBQ, yard table(s), 8 yard seat(s), 12 sun recliner(s)



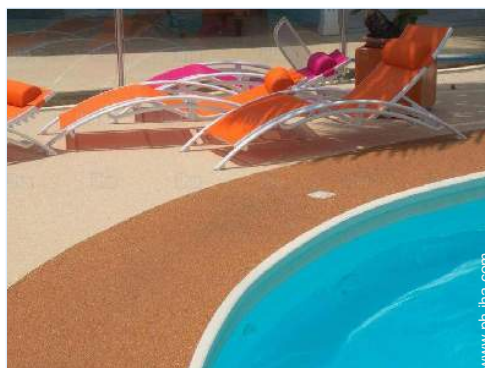
surfing spots

Services

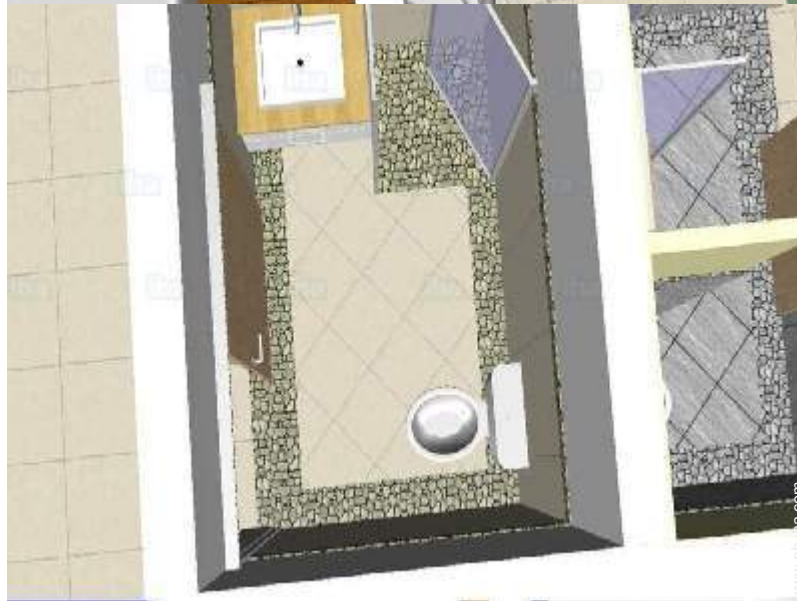
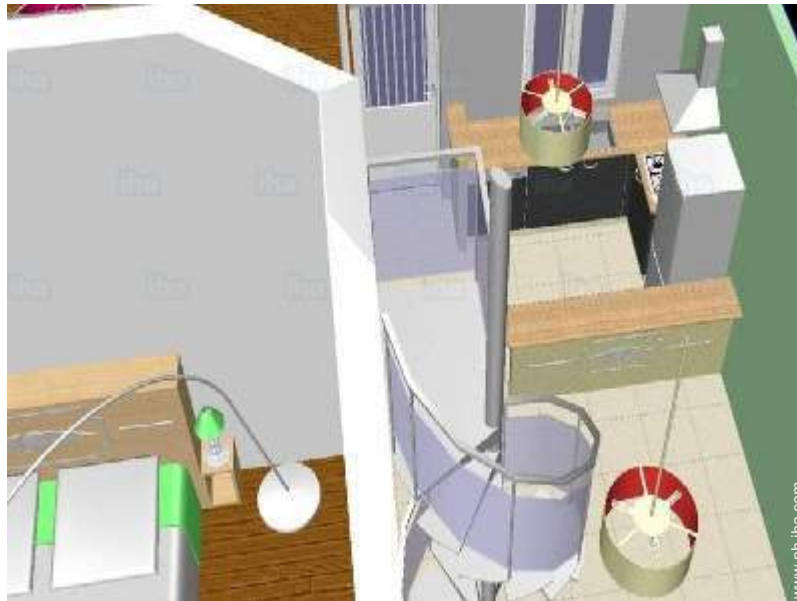
- **washing :**
Sheets (1 X / per week), Towels (1 X / per week), Beach towels (1 X / per week), Comforter(s) (1 X / per week), Pillows (1 X / per week)
- **Single family home :**
Cleaning supplement (+PHP3719*), Yard/swimming pool maintenance, Parking, Airport transfers supplement

For your guidance

- **For your guidance**
No pet allowed
Cell phone network coverage
Water : hot/cold
Local voltage supply : 220-240V / 50Hz
Electricity supply : mains
- **Handicapped people welcome**
Wheelchair access



Floor plan



Advert No. 56539

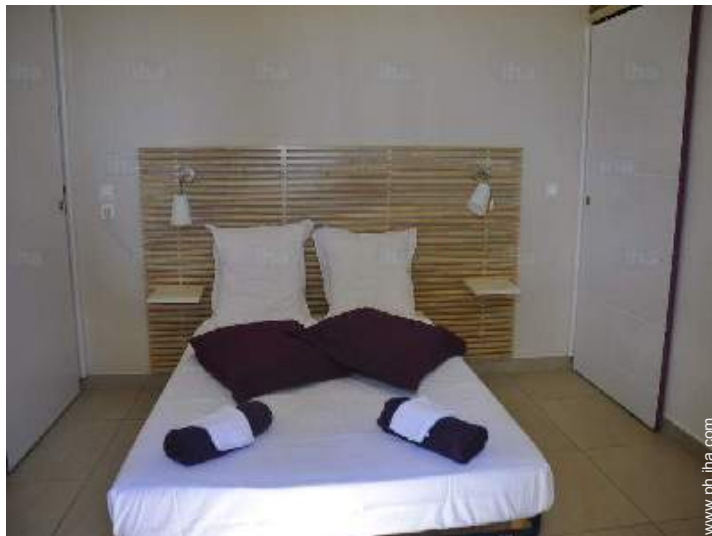
www.ph.ih.com



Photo album - 1



pool view



bedroom

Photo album - 2



view over the sea

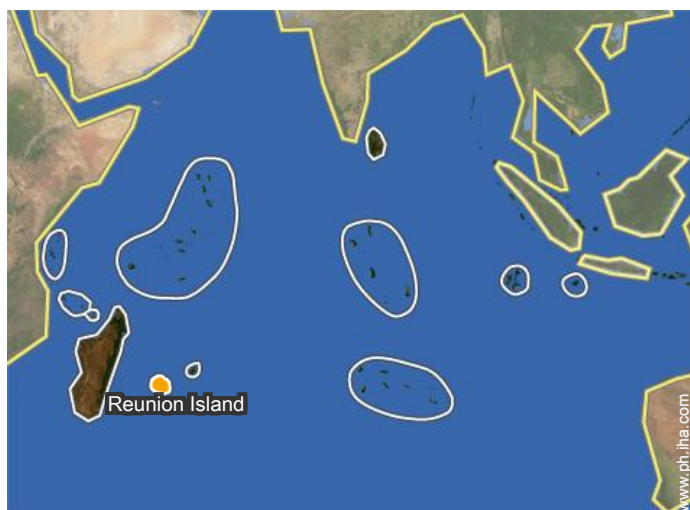


surfing spots




Outside setting

Location



Location & Access

" Arriving from the North, Kelonia, the Observatory of sea turtles, and continue for 1.5 km. At the entrance of Saint-Leu, before the bridge, Leu Pied Dans l'Eau is on the right, sea side. Arriving from the South, through the town of Saint-Leu, the bridge, Leu Pied Dans l'Eau is located on the left side sea. "

 GPS coordinates in degrees, minutes, seconds: Latitude 21° 9'38"S - Longitude 55°17'13"E ([Dwelling](#))

Address

→ 22 rue du Général Lambert
97436 Saint Leu

• Airport Roland Garros

→ Saint Denis (Reunion), Reunion Island
→ Distance : 60km

• Bus station St. Leu

→ Saint Leu, Reunion Island
→ Distance : 500m
→ Time : 5'

- Saint Leu : (800m)
- Saint Gilles les Bains : (15km)
- Saint Denis (Reunion) : (50km)

Contact

Spoken languages



Vacation rental
Saint Leu - Reunion Island
"Leu pied dans l'eau"

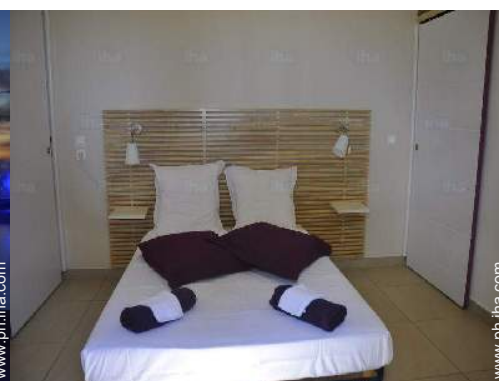
8
[Book now](#)

Rental rates - Villa - from 1 to 24 Person(s)

Rates	Night	Weekend	week	2 weeks	Month
■ Low season	-	PHP5268* (Friday)	PHP15185*	-	-
■ High season	-	PHP5268* (Friday)	PHP15185*	-	-

(Check-in day)

[Book now](#)



pool view

bedroom

Booking conditions

• Reservation

- Payment made upon reservation : 30% of rental sum
- Payment balance : on handing over the keys
- Deposit required : PHP30990*

• rentals

- Day tax included
- Cleaning charge levy on departure : PHP3719*
- Anticipated supplement for :
- supplementary bed(s)

Accepted methods of payment

- Bank transfer (wire) • Check • Draft • Cash

[▶ Book now](#)

[▶ Contact the owner](#)

Contact directly the property owners

www.ph.ih.com

Advert No.

56539

>> [Book now](#) <<

Contact

Spoken languages



* Converted at the rate indicated : €100 = \$116.85 = £89 = PHP6197.99

Advert No. 56539

www.ph.ih.com

