

# Vacation rental Serra da Arrábida "Banda D"

Magnificent apartment only 5 min walking distance from beaches.



**Apartment-Flat** 2nd floor, separate entrance, in(on) a(an) Apartment house/building 3 floors

Setting : exotic

Capacity : from 1 to 6 person(s)

Bedroom(s) : 3

Room(s) : 2

Sol Tróia - Setúbal Discript - Lisbon and Tagus Valley  
Portugal

Advert No. 67738

[www.ph.iha.com](http://www.ph.iha.com)



>> VACATION HOMES

DIRECT BY OWNERS



## Vacation rental



Apartment-Flat 2nd floor, separate entrance, in(on) a(an) Apartment house/building 3 floors

- **Ideal for family, couples with baby**

- **View :** panoramic, unobscured, country side, garden/park, fantastic sunset
- **Setting :** exotic
- **Exposure :** South-west

" 2 bedrooms with double bed area of bunk beds with 2 bunk beds, kitchen, WC, living room, balcony overlooking. Main garden and facilities for children Equipped up to 6 people. "

## Assets

- **Parking :**  
Parking uncovered : off road.
- **Advantages :**  
Mini-golf, 1 bike(s), motor boat, sailing boat, horses and riding equipment

**Benefits :**  
Direct access to the beach, marina mooring space, private golf course



## Surroundings & location



" ALL FACILITIES in the nearby including Beaches, Golf, pools, Dolphin Watch, Bird Watch, etc. The area is a top level vacancy for people and families loving nature. "

### Leisure

- **Leisure activities less than 12 miles :**  
Bathing, snorkelling, scuba diving, water skiing, windsurfing, sailing, kite surfing, canyoning, golf, tennis, kite flying, fishing, fishing
- **Supervised :**  
Dive school
- **Attractions and relaxation :**  
Bar/pub, restaurant, nature reserve, casino

### Surroundings

- **Locality :**  
Sea/ocean 100m  
Sandy beach 50m  
Nudist beach 500m  
Sea inlet 100m  
18 hole golf course 200m  
River 300m  
Mountain range 2km  
Marina 50m
- **Amenities :**  
Bus stop / bus station  
Bike/mountain bike hire 100m  
Scuba diving material hire 4km  
Local stores <50m  
Supermarket <50m  
Mail office <50m  
Bank <50m  
Hospital 2,5km



living room



kitchen

Advert No. 67738

[www.ph.ihha.com](http://www.ph.ihha.com)





living room

### Interior

- **Receive up to :**  
from 1 to 6 person(s) (4 adults, 2 kids)
- **Liveable floor area :**  
55m<sup>2</sup>
- **Interior layout :**  
2 Room(s), 3 bedroom(s), 1 bathroom, 1 shower room, toilets, living room 20m<sup>2</sup>, sitting room, separate kitchen, dining area, tv den, music room, walk-in closet, patio, veranda
- **Sleeps - bed(s) :**  
2 full bed(s), canopy bed(s), 2 bunk beds
- **Guest facilities :**  
T.V., DVD player, mosquito nets, electric heating, Rolling shutters
- **Appliances :**  
Kitchen utensils, cafetiere, electric espresso coffee maker, toaster, oven, mini-oven, micro-wave oven, reffridgerator, deep freeze, vacuum cleaner

### Exterior

- **Outside setting :**  
Pinewood, kitchen garden, ornamental lake
- **Outside amenities :**  
Outside bar, parasol



veranda

### Services

- **washing :**  
Pillows
- **Single family home :**  
Cleaning on departure supplement (+ PHP2169\*)

### For your guidance

- **For your guidance**  
Kids welcome  
No pet allowed  
Non smoking rental, cell phone network coverage, personal transport advisable  
Water : hot/cold  
Local vottage supply : 220V / 60Hz



bedroom

Photo album - 1



kitchen



living room



living room

Photo album - 2



bedroom



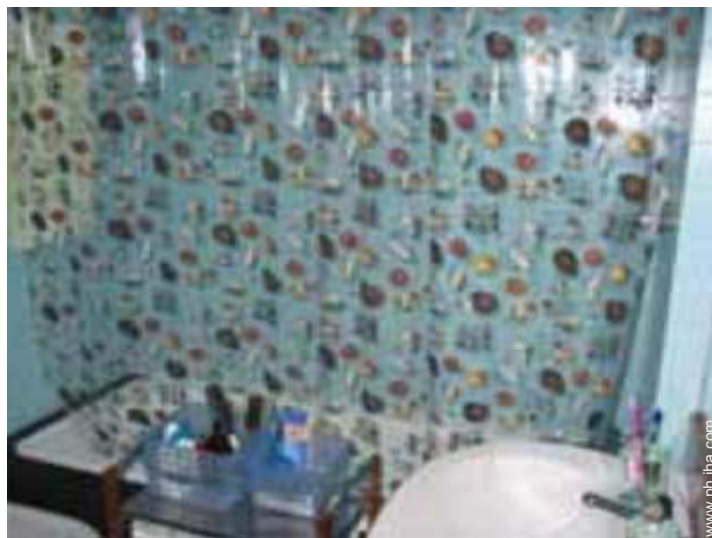
veranda



infants bedroom

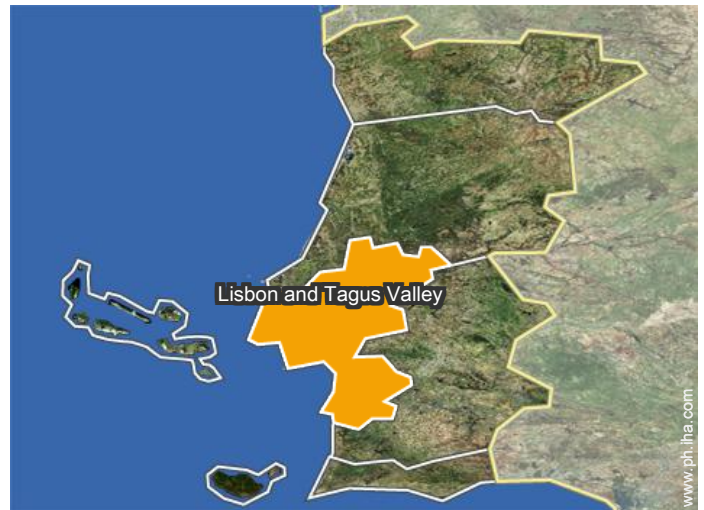
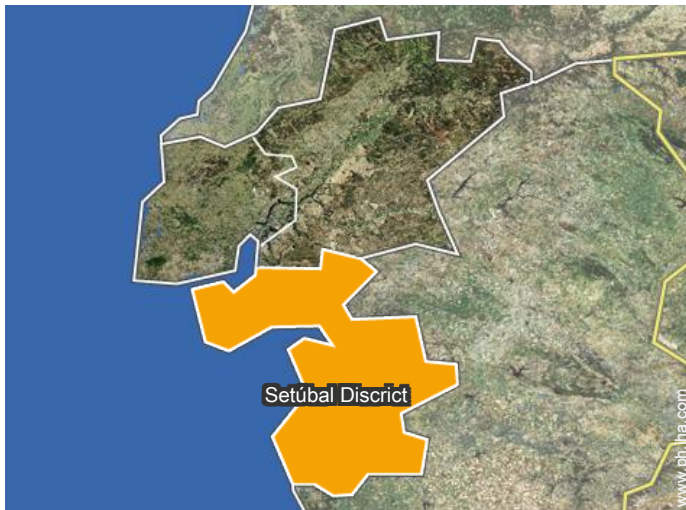


infants bedroom



bathroom

### Location



### Location & Access

" Access by Ferryboat from Setúbal. "



GPS coordinates in degrees, minutes, seconds: Latitude 38°29'7"N - Longitude 8°54'26"W (Dwelling)

#### Address

→ Rua do Lago  
7570 Sol Tróia

#### • Sea port Troia Ponte do Adoxe

→ Sol Tróia, Setúbal District, Lisbon and Tagus Valley, Portugal  
→ Distance : 5km  
→ Time : 10'

#### • Bus station Troia

→ Sol Tróia, Setúbal District, Lisbon and Tagus Valley, Portugal  
→ Distance : 5km  
→ Time : 10'

• Setúbal : (5km)

### Contact

Spoken languages



# Vacation rental Lisbon and Tagus Valley - Portugal "Banda D"

7  
[Book now](#)

## Availability calendar - from : september 2018

Sep	Sa	Su	M	Tu	W	Th	F	Sa	Su	M	Tu	W	Th	F	Sa	Su	M	Tu	W	Th	F	Sa	Su	
2018	1	2	3	4	5	6	7	8	9	10	11	12	13	14	15	16	17	18	19	20	21	22	23	24

Oct	M	Tu	W	Th	F	Sa	Su	M	Tu	W	Th	F	Sa	Su	M	Tu	W	Th	F	Sa	Su	M	Tu	W	
2018	1	2	3	4	5	6	7	8	9	10	11	12	13	14	15	16	17	18	19	20	21	22	23	24	25
	-	-	-	-	-	-	-	-	-	-	-	-	-	-	-	-	-	-	-	-	-	-	-	-	-

Nov	Th	F	Sa	Su	M	Tu	W	Th	F	Sa	Su	M	Tu	W	Th	F	Sa	Su	M	Tu	W	Th	F	
2018	1	2	3	4	5	6	7	8	9	10	11	12	13	14	15	16	17	18	19	20	21	22	23	24
	-	-	-	-	-	-	-	-	-	-	-	-	-	-	-	-	-	-	-	-	-	-	-	-

Dec	Sa	Su	M	Tu	W	Th	F	Sa	Su	M	Tu	W	Th	F	Sa	Su	M	Tu	W	Th	F	Sa	Su	M
2018	1	2	3	4	5	6	7	8	9	10	11	12	13	14	15	16	17	18	19	20	21	22	23	24
	-	-	-	-	-	-	-	-	-	-	-	-	-	-	-	-	-	-	-	-	-	-	-	-

Jan	Tu	W	Th	F	Sa	Su	M	Tu	W	Th	F	Sa	Su	M	Tu	W	Th	F	Sa	Su	M	Tu	W	Th
2019	1	2	3	4	5	6	7	8	9	10	11	12	13	14	15	16	17	18	19	20	21	22	23	24
	-	-	-	-	-	-	-	-	-	-	-	-	-	-	-	-	-	-	-	-	-	-	-	-

Feb	F	Sa	Su	M	Tu	W	Th	F	Sa	Su	M	Tu	W	Th	F	Sa	Su	M	Tu	W	Th		
2019	1	2	3	4	5	6	7	8	9	10	11	12	13	14	15	16	17	18	19	20	21	22	23
	-	-	-	-	-	-	-	-	-	-	-	-	-	-	-	-	-	-	-	-	-	-	-

Mar	F	Sa	Su	M	Tu	W	Th	F	Sa	Su	M	Tu	W	Th	F	Sa	Su	M	Tu	W	Th	F	Sa	Su
2019	1	2	3	4	5	6	7	8	9	10	11	12	13	14	15	16	17	18	19	20	21	22	23	24
	-	-	-	-	-	-	-	-	-	-	-	-	-	-	-	-	-	-	-	-	-	-	-	-

Apr	M	Tu	W	Th	F	Sa	Su	M	Tu	W	Th	F	Sa	Su	M	Tu	W	Th	F	Sa	Su	M	Tu
2019	1	2	3	4	5	6	7	8	9	10	11	12	13	14	15	16	17	18	19	20	21	22	23
	-	-	-	-	-	-	-	-	-	-	-	-	-	-	-	-	-	-	-	-	-	-	-

May	W	Th	F	Sa	Su	M	Tu	W	Th	F	Sa	Su	M	Tu	W	Th	F	Sa	Su	M	Tu	W	Th	F
2019	1	2	3	4	5	6	7	8	9	10	11	12	13	14	15	16	17	18	19	20	21	22	23	24
	-	-	-	-	-	-	-	-	-	-	-	-	-	-	-	-	-	-	-	-	-	-	-	-

June	Sa	Su	M	Tu	W	Th	F	Sa	Su	M	Tu	W	Th	F	Sa	Su	M	Tu	W	Th	F	Sa	Su
2019	1	2	3	4	5	6	7	8	9	10	11	12	13	14	15	16	17	18	19	20	21	22	23
	-	-	-	-	-	-	-	-	-	-	-	-	-	-	-	-	-	-	-	-	-	-	-

Vacation rental  
Serra da Arrábida - Portugal  
"Banda D"

8  
[Book now](#)

Availability calendar - from : june 2019




Jul	M	Tu	W	Th	F	Sa	Su	M	Tu	W	Th	F	Sa	Su	M	Tu	W	Th	F	Sa	Su	M	Tu	W							
2019	1	2	3	4	5	6	7	8	9	10	11	12	13	14	15	16	17	18	19	20	21	22	23	24	25	26	27	28	29	30	31
	-	-	-	-	-	-	-	-	-	-	-	-	-	-	-	-	-	-	-	-	-	-	-	-	-	-	-	-	-	-	

Aug	Th	F	Sa	Su	M	Tu	W	Th	F	Sa	Su	M	Tu	W	Th	F	Sa	Su	M	Tu	W	Th	F	Sa							
2019	1	2	3	4	5	6	7	8	9	10	11	12	13	14	15	16	17	18	19	20	21	22	23	24	25	26	27	28	29	30	31
	-	-	-	-	-	-	-	-	-	-	-	-	-	-	-	-	-	-	-	-	-	-	-	-	-	-	-	-	-	-	

[Month : Next >>](#)

Rental rates - Apartment-Flat - from 1 to 6 Person(s)

Rates	Night	Weekend	week	2 weeks	Month
 Low season	PHP3099*	PHP6198*	PHP21693*	PHP40287*	-
 Mid season	PHP4958* (Monday)	PHP11156* (Friday)	PHP24792* (Monday)	PHP49584* (Monday)	-
 High season	PHP6818* (Monday)	PHP21693* (Friday)	PHP47725* (Monday)	PHP86772* (Monday)	-

(Check-in day)

[Book now](#)

Booking conditions

• Reservation

- Payment made upon reservation : 50% of rental sum
- Payment balance : on handing over the keys
- Deposit required : PHP9297\*

• rentals

- Service charges included
- Cleaning charge levy on departure : PHP2169\*

[▶ Book now](#)

[▶ Contact the owner](#)

Accepted methods of payment

- Visa/Delta/Electron
- Bank transfer (wire)
- PayPal
- Cash

Contact directly the property owners

[www.ph.ih.com](http://www.ph.ih.com)  
Advert No.  
67738  
[>> Book now <<](#)

Contact

Spoken languages



\* Converted at the rate indicated : €100 = \$116.85 = £89 = PHP6197.99

Advert No. 67738

[www.ph.ih.com](http://www.ph.ih.com)



[>> VACATION HOMES](#)

DIRECT BY OWNERS