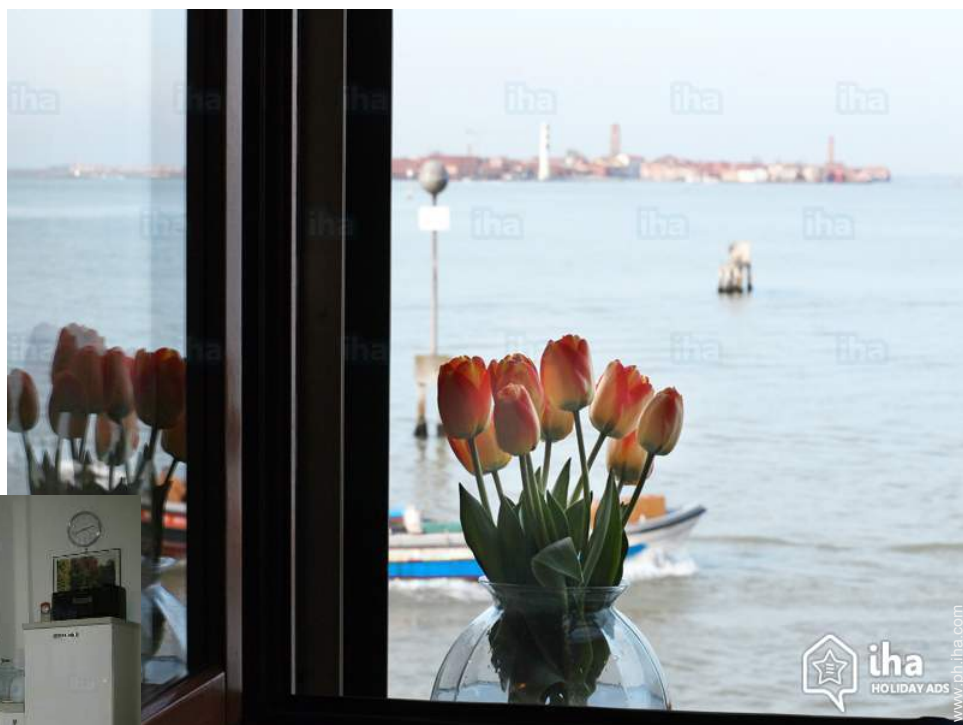


Vacation rental Venice "Arsenale-celestia"

The apartment is very comfortable in a characteristic area of the city centre area relaxing not chaotic Venetian



Apartment-Flat 2nd floor, shared entrance, in(on) a(an) Apartment house/building 1 floor

Setting : cultural, waterfront

Capacity : from 1 to 4 person(s)

Bedroom(s) : 1

Room(s) : 1

Venice - Venice Province (VE) - Veneto

Italy

Advert No. 2525

www.ph.iha.com



Vacation rental



Apartment-Flat 2nd floor, shared entrance, in(on) a(an) Apartment house/building 1 floor

- **Ideal for all age groups, family**
- **View :** panoramic, unobscured, not overlooked, dominant, city, fantastic sunset
- **Setting :** cultural, waterfront
- **Exposure :** North-east

" The apartment is located in the Castello district and overlooks the Venice lagoon from where you can enjoy a beautiful view of the islands of Murano, Burano and San Michele. It also has the advantage of having the vaporetto, two steps below the House, within minutes in the major characteristic of the city and in the world's most beautiful piazza San Marco, or walk along the streets and squares, crossing bridges and canals, for arrive in 10 minutes to Piazza San Marco and the Rialto Bridge with its market fish and fruit and typical Venetian inns with the fabulous cicchetti and shadows of wine. The apartment is very comfortable: you will find yourself, a particularly lovely and well equipped with everything you need for cooking, Cookware, cutlery, refrigerator, washing machine, tv, stereo radio, iron, Ironing Board, plates and glasses, table cloths, washing powder, salt and sugar, coffee, tea, a bottle of mineral water and breakfast (milk, biscuits, jam. ..). All linen is provided for both the bathroom and bedroom. In the bathroom there is a bath gel, SOAP, hair dryer. "

Assets

- **baby equipment :**
 High chair

Surroundings & location



City



Festival



Culture

" Nearby, you will find several shops and in particular in the beautiful Campo S. s. Giovanni e Paolo can do breakfast sitting outdoors (kissed) (or inside) the tables of one of Venice's most famous pastry shops Rosa Salva always close to Campo S.S. Giovanni e Paolo is the Pizzeria the witch with quaint garden outside (beautiful in summer) where you can eat a delicious pizza and drink great wine and beer. If you want to eat fresh fish, always in the area, you will find the antica trattoria Bandierette at 5 minutes walk from the apartment to be able to make your shopping in the supermarket Punto SMA in s. Lorenzo, jam packed with everything you need from bread to milk the meat to food etc. .. Or with the vaporetto, get to the supermarket COOP just one stop, this jam packed of everything, so do no toil with bags in back home. From the ferry stop, you can also reach in 15 minutes the beach of Lido di Venezia, where resorts are open from May to September, and where in September the International Film Festival takes place every year. "

Leisure

- **Leisure activities less than 12 miles :**

Bathing, pedalo, snorkelling, sailing, tennis, sand yachting, boat trips, fishing, fishing, pétanque field

- **Attractions and relaxation :**

Bar/pub, discotheque, restaurant, movie theater, park and garden, exhibition center, art gallery, historical site, museum, theater, opera house, festivals, antiques & bric-a-brac, local craftstore, cellar and wine tasting, casino

Surroundings

- **Locality :**

Sandy beach 1km
 Public swimming pool 800m
 Public tennis court 800m
 Stretch of water

- **Amenities :**

Downtown
 Bus stop / bus station
 Bus pick up point beach
 Breadstore
 Supermarket
 High class retailers
 Hairdressing salon
 Internet cafe
 Mail office
 Bank
 Drugstore
 Hospital



Kitchen Area



cosy nook

Exterior

- Outside accommodation :
Balcony



dining area



cosy nook

Interior

- Receive up to :
from 1 to 4 person(s) (4 adults)
- Liveable floor area :
50m²
- Interior layout :
1 Room(s), 1 bedroom(s), 1 bathroom, 1 shower room, 1 toilets, living room 25m², Kitchen Area, dining area, cosy nook
- Sleeps - bed(s) :
1 full bed(s), 1 sleeper sofa(s) 2 pers, 1 baby cradle
- Guest facilities :
T.V., hi-fi system, t.v points, internet access, wifi, wardrobe, cupboard, radio alarmclock, hair dryer, fly screens, fully air-conditioned, mobile cool air fan, central heating, Drapes, Double glazed
- Appliances :
Crockery/flatware, kitchen utensils, cafetiere, electric espresso coffee maker, electric kettle, toaster, juicer, gaz stove, micro-wave oven, extractor hood, refridgerator, washing machine, vacuum cleaner, iron, ironing board

Services

- washing :
Sheets, Towels, Linen, Comforter(s), Comforter(s), Pillows
- Single family home :
Cleaning on departure supplement (+ PHP2479*)
- Restauration :
Breakfast

For your guidance

- For your guidance
Kids welcome
No pet allowed
Water : hot/cold
Local voltage supply : 220V / 60Hz
Electricity supply : mains



cosy nook

Photo album - 1



cosy nook



Kitchen Area



cosy nook



cosy nook



dining area

Photo album - 2



living room

living room

Interior layout



sleeper sofa(s) 2 pers

bedroom

bedroom



master bedroom

master bedroom

master bedroom



bathroom

bathroom

Photo album - 3



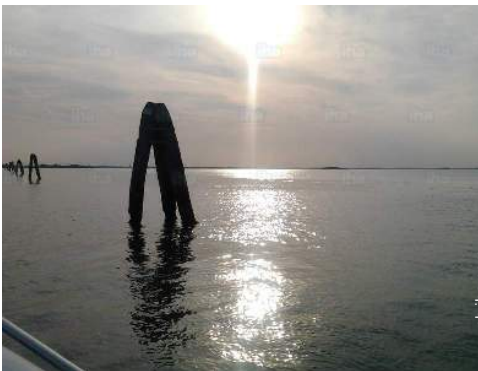
bathroom



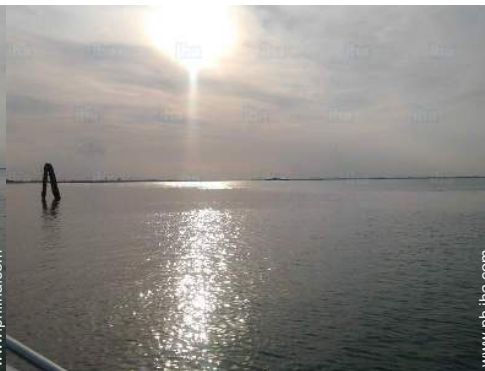
shower room



shower room



view from the apartment



view from the apartment



view from the balcony



view from the balcony



view from the balcony



view from the living room



historical site



panoramic view




view from the house

Route map



Location & Access

" The apartment is 2 steps from the vaporetto stop CELESTIA in the Castello district "

 GPS coordinates in degrees, minutes, seconds: Latitude 45° 26'20"N - Longitude 12°20'59"E ([Dwelling](#))

Address

→ Castello- Arsenale
30100 Venice

• Airport Venice Marco Polo

→ Venice, Venice Province, Veneto, Italy
→ Distance : 10km
→ Time : 30'

• Freeway (exit) Serenissima

→ Mestre, Venice Province, Veneto, Italy
→ Distance : 7,5km
→ Time : 20'

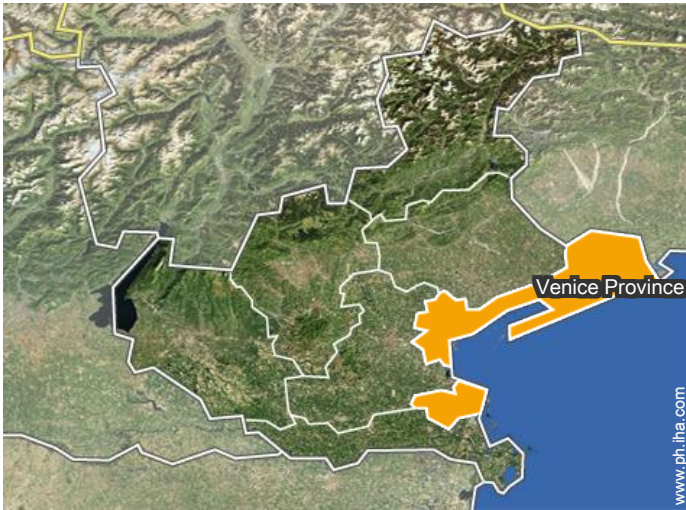
- Mestre : (7,5km)
- Burano : (1km)

Contact

Spoken languages



Location



Vacation rental
Venice - Italy
"Arsenale-celestia"

Availability calendar - from : june 2019

June	Sa	Su	M	Tu	W	Th	F	Sa	Su	M	Tu	W	Th	F	Sa	Su	M	Tu	W	Th	F	Sa	Su	M	Tu	W	Th	F	Sa	Su
2019	1	2	3	4	5	6	7	8	9	10	11	12	13	14	15	16	17	18	19	20	21	22	23	24	25	26	27	28	29	30
																	-	-	-	-	-	-	-	-	-	-	-	-	-	-

Jul	M	Tu	W	Th	F	Sa	Su	M	Tu	W	Th	F	Sa	Su	M	Tu	W	Th	F	Sa	Su	M	Tu	W	Th	F	Sa	Su	M	Tu	W
2019	1	2	3	4	5	6	7	8	9	10	11	12	13	14	15	16	17	18	19	20	21	22	23	24	25	26	27	28	29	30	31
	-	-	-	-	-	-	-	-	-	-	-	-	-	-	-	-	-	-	-	-	-	-	-	-	-	-	-	-	-	-	-

Aug	Th	F	Sa	Su	M	Tu	W	Th	F	Sa	Su	M	Tu	W	Th	F	Sa	Su	M	Tu	W	Th	F	Sa	Su	M	Tu	W	Th	F	Sa
2019	1	2	3	4	5	6	7	8	9	10	11	12	13	14	15	16	17	18	19	20	21	22	23	24	25	26	27	28	29	30	31
	-	-	-	-	-	-	-	-	-	-	-	-	-	-	-	-	-	-	-	-	-	-	-	-	-	-	-	-	-	-	-

Sep	Su	M	Tu	W	Th	F	Sa	Su	M	Tu	W	Th	F	Sa	Su	M	Tu	W	Th	F	Sa	Su	M	Tu	W	Th	F	Sa	Su	M
2019	1	2	3	4	5	6	7	8	9	10	11	12	13	14	15	16	17	18	19	20	21	22	23	24	25	26	27	28	29	30
	-	-	-	-	-	-	-	-	-	-	-	-	-	-	-	-	-	-	-	-	-	-	-	-	-	-	-	-	-	-

Oct	Tu	W	Th	F	Sa	Su	M	Tu	W	Th	F	Sa	Su	M	Tu	W	Th	F	Sa	Su	M	Tu	W	Th	F	Sa	Su	M	Tu	W	Th
2019	1	2	3	4	5	6	7	8	9	10	11	12	13	14	15	16	17	18	19	20	21	22	23	24	25	26	27	28	29	30	31
	-	-	-	-	-	-	-	-	-	-	-	-	-	-	-	-	-	-	-	-	-	-	-	-	-	-	-	-	-	-	-

Nov	F	Sa	Su	M	Tu	W	Th	F	Sa	Su	M	Tu	W	Th	F	Sa	Su	M	Tu	W	Th	F	Sa	Su	M	Tu	W	Th	F	Sa
2019	1	2	3	4	5	6	7	8	9	10	11	12	13	14	15	16	17	18	19	20	21	22	23	24	25	26	27	28	29	30
	-	-	-	-	-	-	-	-	-	-	-	-	-	-	-	-	-	-	-	-	-	-	-	-	-	-	-	-	-	-

Dec	Su	M	Tu	W	Th	F	Sa	Su	M	Tu	W	Th	F	Sa	Su	M	Tu	W	Th	F	Sa	Su	M	Tu	W	Th	F	Sa	Su	M	Tu
2019	1	2	3	4	5	6	7	8	9	10	11	12	13	14	15	16	17	18	19	20	21	22	23	24	25	26	27	28	29	30	31
	-	-	-	-	-	-	-	-	-	-	-	-	-	-	-	-	-	-	-	-	-	-	-	-	-	-	-	-	-	-	-

Jan	W	Th	F	Sa	Su	M	Tu	W	Th	F	Sa	Su	M	Tu	W	Th	F	Sa	Su	M	Tu	W	Th	F	Sa	Su	M	Tu	W	Th	F
2020	1	2	3	4	5	6	7	8	9	10	11	12	13	14	15	16	17	18	19	20	21	22	23	24	25	26	27	28	29	30	31
	-	-	-	-	-	-	-	-	-	-	-	-	-	-	-	-	-	-	-	-	-	-	-	-	-	-	-	-	-	-	-

Feb	Sa	Su	M	Tu	W	Th	F	Sa	Su	M	Tu	W	Th	F	Sa	Su	M	Tu	W	Th	F	Sa	Su	M	Tu	W	Th	F	Sa
2020	1	2	3	4	5	6	7	8	9	10	11	12	13	14	15	16	17	18	19	20	21	22	23	24	25	26	27	28	29
	-	-	-	-	-	-	-	-	-	-	-	-	-	-	-	-	-	-	-	-	-	-	-	-	-	-	-	-	-

Mar	Su	M	Tu	W	Th	F	Sa	Su	M	Tu	W	Th	F	Sa	Su	M	Tu	W	Th	F	Sa	Su	M	Tu	W	Th	F	Sa	Su	M	Tu
2020	1	2	3	4	5	6	7	8	9	10	11	12	13	14	15	16	17	18	19	20	21	22	23	24	25	26	27	28	29	30	31
	-	-	-	-	-	-	-	-	-	-	-	-	-	-	-	-	-	-	-	-	-	-	-	-	-	-	-	-	-	-	-



Vacation rental
Veneto - Venice
"Arsenale-celestia"

10
[Book now](#)

Availability calendar - from : march 2020

Apr	W	Th	F	Sa	Su	M	Tu	W	Th	F	Sa	Su	M	Tu	W	Th	F	Sa	Su	M	Tu	W	Th							
2020	1	2	3	4	5	6	7	8	9	10	11	12	13	14	15	16	17	18	19	20	21	22	23	24	25	26	27	28	29	30
	-	-	-	-	-	-	-	-	-	-	-	-	-	-	-	-	-	-	-	-	-	-	-	-	-	-	-	-	-	

May	F	Sa	Su	M	Tu	W	Th	F	Sa	Su	M	Tu	W	Th	F	Sa	Su	M	Tu	W	Th	F	Sa	Su							
2020	1	2	3	4	5	6	7	8	9	10	11	12	13	14	15	16	17	18	19	20	21	22	23	24	25	26	27	28	29	30	31
	-	-	-	-	-	-	-	-	-	-	-	-	-	-	-	-	-	-	-	-	-	-	-	-	-	-	-	-	-	-	

[Month : Next >>](#)

Rental rates - Apartment-Flat - from 1 to 4 Person(s)

Rates	Night	Weekend	week	2 weeks	Month
 Low season	PHP5578* > 2	-	-	-	-
 Mid season	PHP6198* > 2	-	-	-	-
 High season	PHP7438* > 2	-	-	-	-

> Minimum Night

[Book now](#)

Booking conditions

• Reservation

- Payment made upon reservation : PHP6198*
- Payment balance : on handing over the keys
- Deposit required : PHP9297*

• rentals

- Day tax in addition
- Cleaning charge levy on departure : PHP2479*

[▶ Book now](#)

[▶ Contact the owner](#)

Accepted methods of payment

- International Money Order
- Bank transfer (wire)
- Cash

Contact directly the property owners

www.ph.ih.com
Advert No.
2525
[>> Book now <<](#)

Contact

Spoken languages



* Converted at the rate indicated : €100 = \$116.85 = £89 = PHP6197.99

Advert No. 2525

www.ph.ih.com

